

Envelope Connect

Envelope Connect (EC-S10) provides connectivity and edge computing for the Envelope Ecosystem. It functions as an IoT edge gateway, providing connection to Design, System and Enterprise Envelope products and delivers Active Performance Management for all.

What will you get with Envelope Connect?

SYSTEM FLEXIBILITY

Discover products connected to it for minimal manual configuration and BMS integration ready.

SECURE CONNECTIVITY

Enables Cloud services via a secure and reliable connection and it facilitates integration to open architectures and systems. Tracks performance data easily and securely, assuring asset performance settings are always available and backed up.

CLOUD CONNECTION

Connects connects a range of assets to provide Active Performance Management, early diagnostics, and advanced analytics.



DEVICE FEATURES

- 

Modular Linux-based IoT Edge Gateway with Cellular, Ethernet, Wi-Fi, Bluetooth, and RS-485. Supports Modbus and BACnet protocols.
- 

Provides connectivity and interoperability to Systems Envelope and Enterprise Envelope based products.
- 

Functioning as an IoT Gateway for Design Envelope Controllers.
- 

Designed with cybersecurity in mind to support secured remote management of equipment and over-the-air software updates.
- 

Bluetooth-ready to manage and support Design Envelope products.

Envelope Connect

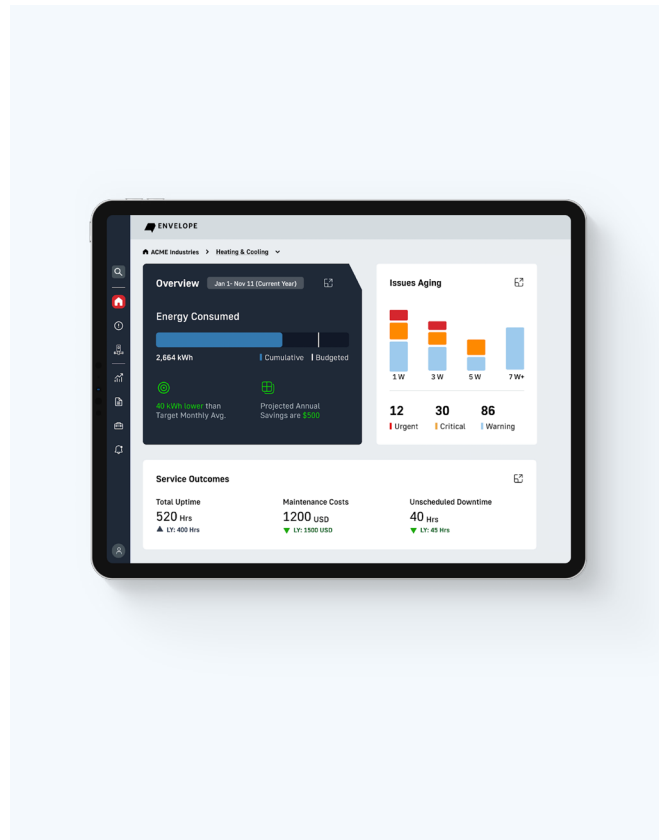
Technical Specifications

COMMUNICATIONS	802.11ax Wi-Fi
	Bluetooth 5.3 BLE
	RS-485 - MODBUS client/server
	2x Gbit Ethernet, RJ45 connectors
	4G/LTE CAT4 Cellular
REAL TIME CLOCK	Coin-cell battery backup
INPUT VOLTAGE RANGE	12V - 24V DC
POWER CONSUMPTION	2.5W - 8W
MICROPROCESSOR	NXP i.MX8M Plus Quad, quad-core ARM Cortex-A53, 1.8GHz
SECURITY	<ul style="list-style-type: none"> Standards: TLS 1.3, AES-256 for encryption, NTPv4, MQTT Secure provisioning for device certificates Certificate-based mutual authentication for Envelope Cloud supported products Listening TCP/IP ports limited to local maintenance port Secure remote management

Environmental Limits

OPERATING TEMPERATURE RANGE	0 ° to 50 °C (32 ° to 122 °F)
STORAGE TEMPERATURE RANGE	-40 ° to 85 °C (-40 ° to 185 °F)
OPERATING LIMIT	10% to 90% (non-condensing)

Product Imagery



PRODUCT SPECIFICATIONS



WARRANTY

Please visit armstrongfluidtechnology.com for warranty details in your region of the world.

COMPLIANCE

FC CE UK

ENVELOPE CONNECT | 90.205