

SUCTION GUIDES MODEL SG | THREADED
INLET 40-50 | SUBMITTAL

File No: 35-524IEC
Date: APRIL 08, 2020
Supersedes: 35-524IEC
Date: DECEMBER 09, 2019

Job: _____ Representative: _____
 _____ Ordered by: _____ Date: _____
 Engineer: _____ Submitted by: _____ Date: _____
 Contractor: _____ Approved by: _____ Date: _____

MODEL NUMBER	CONNECTION SIZES		QUANTITY REQUIRED	IDENTIFICATION
	INLET FROM SYSTEM BSPT	OUTLET TO PUMP		
		<input type="checkbox"/> PN 16 <input type="checkbox"/> PN 25		

MATERIALS OF CONSTRUCTION

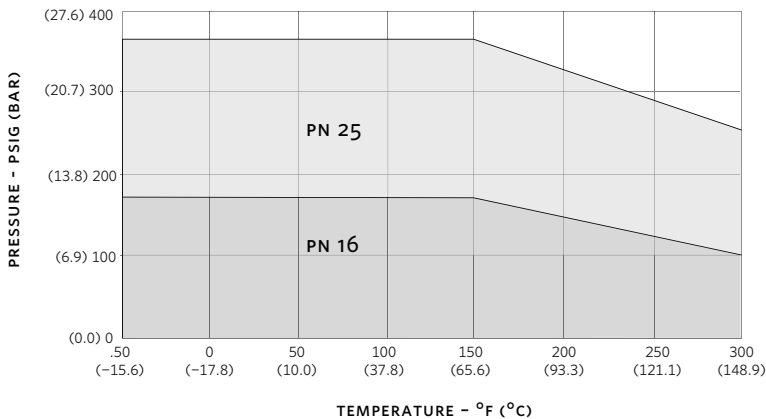
- Body:** Ductile iron
- Strainer:** Stainless steel, 3 mm(0.125") perf.
- Start-up strainer :** Fine mesh galvanized steel
(remove after 24 hours)
- Guide vanes:** Ductile iron
- Cover plate:** Ductile iron
- Cover gasket:** Synthetic fiber

MAXIMUM PUMP OPERATING CONDITIONS

- PN 16**
12 bar at 65°C (175 psig at 150°F)
- PN 25**
26 bar at 65°C (375 psig at 150°F)

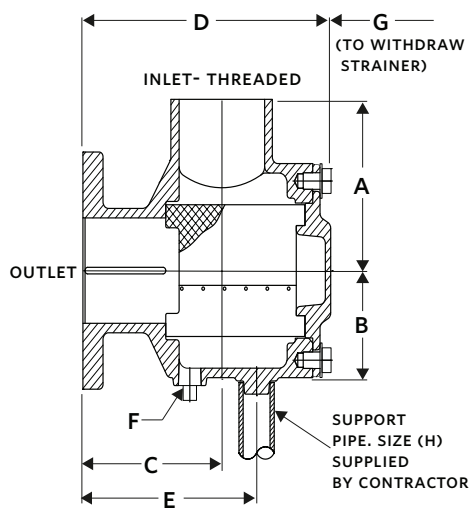
OPTIONS

PRESSURE TEMPERATURE LIMITS

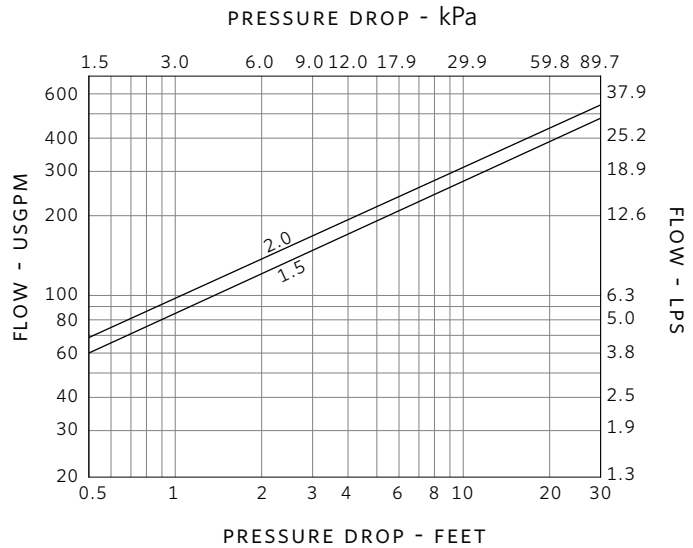


MODEL NUMBER	PART NUMBER	RATING	INLET	OUTLET	STRAINER FREE AREA cm ² (in ²)	DIMENSIONS mm (inches)								WEIGHT kg (lbs)
						A	B	C	D	E	F	G	ØH	
SG-1515TF	516860-052	PN 16	38 (1.50)	38 (1.50)	205(31.79)	114 (4.50)	78 (3.07)	124 (4.87)	210 (8.28)	143 (5.64)	13 (0.50)	121 (4.75)	24 (0.94)	10.2 (22.42)
SG-215TF	516860-062	PN 16	51 (2.00)	38 (1.50)	205(31.79)	114 (4.50)	78 (3.07)	124 (4.87)	210 (8.28)	143 (5.64)	13 (0.50)	121 (4.75)	24 (0.94)	10 (21.98)
SG-22TF	516860-072	PN 16	51 (2.00)	51 (2.00)	205(31.79)	114 (4.50)	78 (3.07)	124 (4.87)	210 (8.28)	143 (5.64)	13 (0.50)	121 (4.75)	24 (0.94)	105 (23.09)
SGH-1515TF	516860-053	PN 25	38 (1.50)	38 (1.50)	205(31.79)	114 (4.50)	78 (3.07)	127 (5.00)	214 (8.41)	147 (5.77)	13 (0.50)	121 (4.75)	24 (0.94)	11.7 (25.72)
SGH-215TF	516860-063	PN 25	51 (2.00)	38 (1.50)	205(31.79)	114 (4.50)	78 (3.07)	127 (5.00)	214 (8.41)	147 (5.77)	13 (0.50)	121 (4.75)	24 (0.94)	11.5 (25.30)
SGH-22TF	516860-073	PN 25	51 (2.00)	51 (2.00)	205(31.79)	114 (4.50)	78 (3.07)	127 (5.00)	214 (8.41)	147 (5.77)	13 (0.50)	121 (4.75)	24 (0.94)	11.5 (25.42)

- Dimensions and weights are for reference only. Dimensions are mm (inches) and weights are kg (lbs).
- Tolerance of ±3 mm(±0.125") should be used
- For exact installation data, please write factory for certified dimensions



PRESSURE DROP CHART SUCTION GUIDES



TORONTO
+1 416 755 2291

BUFFALO
+1 716 693 8813

BIRMINGHAM
+44 (0) 8444 145 145

MANCHESTER
+44 (0) 8444 145 145

BANGALORE
+91 (0) 80 4906 3555

SHANGHAI
+86 (0) 21 5237 0909

SÃO PAULO
+55 11 4785 1330

LYON
+33 (0) 420 102 625

DUBAI
+971 4 887 6775

MANNHEIM
+49 (0) 621 3999 9858