

**SUCTION GUIDES MODEL SG | THREADED**  
**INLET 40-50 | SUBMITTAL**

File No: 35-524IEC  
 Date: JANUARY 15, 2021  
 Supersedes: 35-524IEC  
 Date: APRIL 08, 2020

Job: \_\_\_\_\_ Representative: \_\_\_\_\_  
 \_\_\_\_\_ Ordered by: \_\_\_\_\_ Date: \_\_\_\_\_  
 Engineer: \_\_\_\_\_ Submitted by: \_\_\_\_\_ Date: \_\_\_\_\_  
 Contractor: \_\_\_\_\_ Approved by: \_\_\_\_\_ Date: \_\_\_\_\_

MODEL NUMBER	CONNECTION SIZES		QUANTITY REQUIRED	IDENTIFICATION
	INLET FROM SYSTEM BSPT	OUTLET TO PUMP		
		<input type="checkbox"/> PN 16 <input type="checkbox"/> PN 25		

**MATERIALS OF CONSTRUCTION**

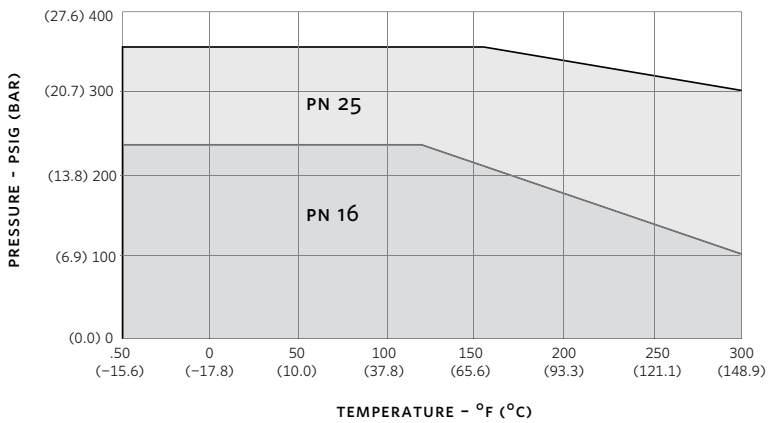
- Body:** Ductile iron
- Strainer:** Stainless steel, 3 mm(0.125") perf.
- Start-up strainer :** Fine mesh galvanized steel  
(remove after 24 hours)
- Guide vanes:** Ductile iron
- Cover plate:** Ductile iron
- Cover O ring :** EPDM

**MAXIMUM PUMP OPERATING CONDITIONS**

- PN 16**  
 16 bar at 49°C (232 psig at 120°F)  
 7 bar at 150°C (100 psig at 300°F)
- PN 25**  
 26 bar at 65°C (375 psig at 150°F)  
 18 bar at 150°C (260 psig at 300°F)

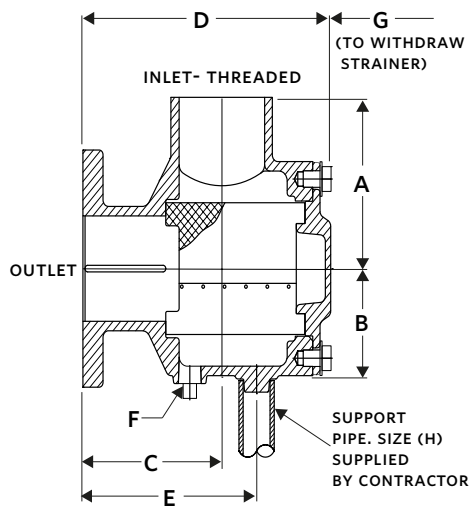
**OPTIONS**

**PRESSURE TEMPERATURE LIMITS**

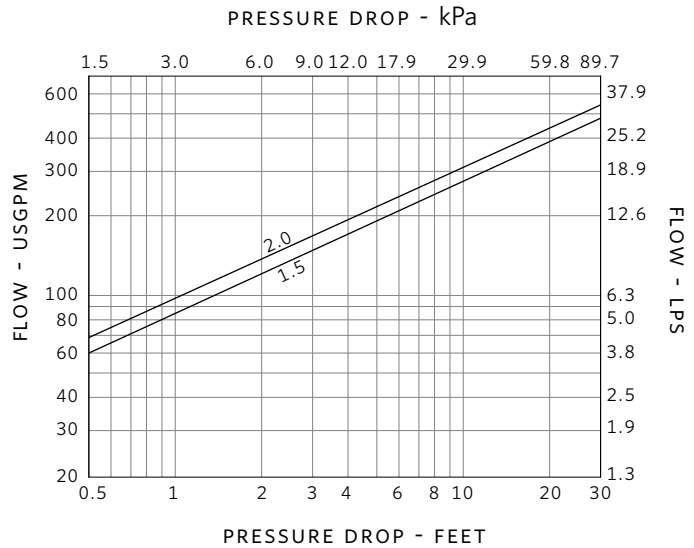


MODEL NUMBER	PART NUMBER	RATING	INLET	OUTLET	STRAINER FREE AREA cm <sup>2</sup> (in <sup>2</sup> )	DIMENSIONS mm (inches)								WEIGHT kg (lbs)
						A	B	C	D	E	F	G	ØH	
SG-1515TF	516860-054	PN 16	38 (1.50)	38 (1.50)	205(31.79)	114 (4.50)	78 (3.07)	124 (4.87)	210 (8.28)	143 (5.64)	13 (0.50)	121 (4.75)	24 (0.94)	10.2 (22.42)
SG-215TF	516860-064	PN 16	51 (2.00)	38 (1.50)	205(31.79)	114 (4.50)	78 (3.07)	124 (4.87)	210 (8.28)	143 (5.64)	13 (0.50)	121 (4.75)	24 (0.94)	10 (21.98)
SG-22TF	516860-074	PN 16	51 (2.00)	51 (2.00)	205(31.79)	114 (4.50)	78 (3.07)	124 (4.87)	210 (8.28)	143 (5.64)	13 (0.50)	121 (4.75)	24 (0.94)	105 (23.09)
SGH-1515TF	516860-055	PN 25	38 (1.50)	38 (1.50)	205(31.79)	114 (4.50)	78 (3.07)	127 (5.00)	214 (8.41)	147 (5.77)	13 (0.50)	121 (4.75)	24 (0.94)	11.7 (25.72)
SGH-215TF	516860-065	PN 25	51 (2.00)	38 (1.50)	205(31.79)	114 (4.50)	78 (3.07)	127 (5.00)	214 (8.41)	147 (5.77)	13 (0.50)	121 (4.75)	24 (0.94)	11.5 (25.30)
SGH-22TF	516860-075	PN 25	51 (2.00)	51 (2.00)	205(31.79)	114 (4.50)	78 (3.07)	127 (5.00)	214 (8.41)	147 (5.77)	13 (0.50)	121 (4.75)	24 (0.94)	11.5 (25.42)

- Dimensions and weights are for reference only. Dimensions are mm (inches) and weights are kg (lbs).
- Tolerance of ±3 mm(±0.125") should be used
- For exact installation data, please write factory for certified dimensions



**PRESSURE DROP CHART SUCTION GUIDES**



TORONTO  
+1 416 755 2291

BUFFALO  
+1 716 693 8813

BIRMINGHAM  
+44 8444 145 145

MANCHESTER  
+44 8444 145 145

BANGALORE  
+91 80 4906 3555

SHANGHAI  
+86 21 5237 0909

SÃO PAULO  
+55 11 4785 1330

LYON  
+33 4 26 83 78 74

DUBAI  
+971 4 887 6775

MANNHEIM  
+49 621 3999 9858