

SUCTION GUIDES MODEL SG | THREADED INLET 1.5 - 2 | SUBMITTAL

File No: 35-524
Date: JANUARY 15, 2021
Supersedes: 35-524
Date: JULY 30, 2019

Job: _____ Representative: _____
 _____ Ordered by: _____ Date: _____
 Engineer: _____ Submitted by: _____ Date: _____
 Contractor: _____ Approved by: _____ Date: _____

| MODEL NUMBER | CONNECTION SIZES | | QUANTITY REQUIRED | IDENTIFICATION |
|--------------|------------------------|---|-------------------|----------------|
| | INLET FROM SYSTEM NPTF | OUTLET TO PUMP | | |
| | | <input type="checkbox"/> ANSI 125 <input type="checkbox"/> ANSI 250 | | |
| | | | | |
| | | | | |
| | | | | |
| | | | | |

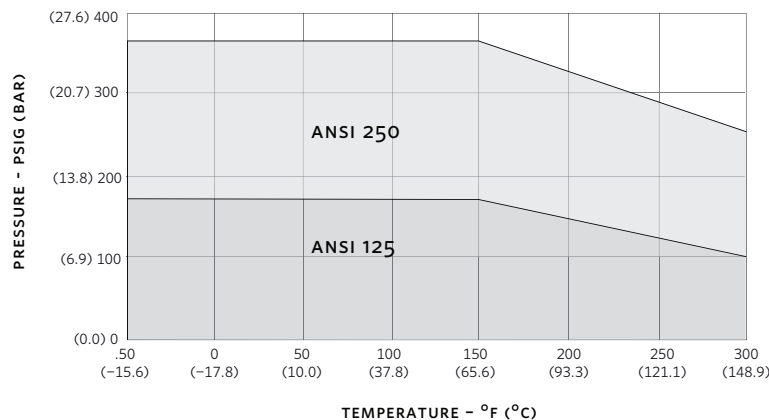
MAXIMUM PUMP OPERATING CONDITIONS

- ANSI 125**
 175 psig at 150°F (12 bar at 65°C)
 100 psig at 300°F (7 bar at 150°C)
- ANSI 250**
 375 psig at 150°F (26 bar at 65°C)
 260 psig at 300°F (18 bar at 150°C)

MATERIALS OF CONSTRUCTION

- Body:** Ductile iron
- Strainer:** Stainless steel, 0.125" (3 mm) perf.
- Start-up strainer:** Fine mesh galvanized steel
(remove after 24 hours)
- Guide vanes:** Ductile iron
- Cover plate:** Ductile iron
- Cover O ring:** EPDM

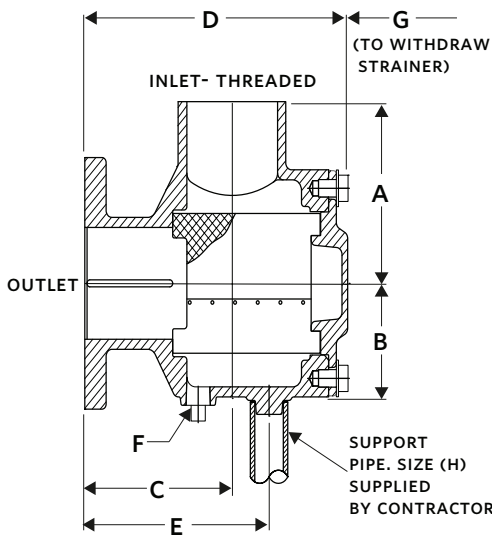
PRESSURE TEMPERATURE LIMITS



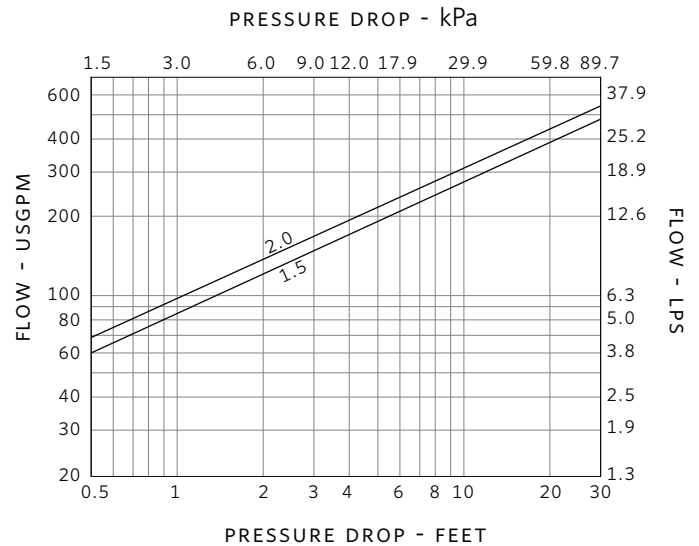
OPTIONS

| MODEL NUMBER | PART NUMBER | RATING | INLET | OUTLET | STRAINER FREE AREA in ² (cm ²) | DIMENSIONS inches (mm) | | | | | | | | WEIGHT lbs (kgs) |
|--------------|-------------|----------|--------------|--------------|--|------------------------|--------------|---------------|---------------|---------------|--------------|---------------|--------------|---------------------|
| | | | | | | A | B | C | D | E | F | G | ØH | |
| SG-1515TF | 516860-052 | ANSI 125 | 1.50 (38) | 1.50 (38) | 31.79 (205) | 4.50 (114) | 3.07 (78) | 4.87 (124) | 8.28 (210) | 5.64 (143) | 0.50 (13) | 4.75 (121) | 0.94 (24) | 22.42 (10.2) |
| SG-215TF | 516860-062 | ANSI 125 | 2.00 (51) | 1.50 (38) | 31.79 (205) | 4.50 (114) | 3.07 (78) | 4.87 (124) | 8.28 (210) | 5.64 (143) | 0.50 (13) | 4.75 (121) | 0.94 (24) | 21.98 (10.0) |
| SG-22TF | 516860-072 | ANSI 125 | 2.00 (51) | 2.00 (51) | 31.79 (205) | 4.50 (114) | 3.07 (78) | 4.87 (124) | 8.28 (210) | 5.64 (143) | 0.50 (13) | 4.75 (121) | 0.94 (24) | 23.09 (10.5) |
| SGH-1515TF | 516860-053 | ANSI 250 | 1.50 (38) | 1.50 (38) | 31.79 (205) | 4.50 (114) | 3.07 (78) | 5.00 (127) | 8.41 (214) | 5.77 (147) | 0.50 (13) | 4.75 (121) | 0.94 (24) | 25.72 (11.7) |
| SGH-215TF | 516860-063 | ANSI 250 | 2.00 (51) | 1.50 (38) | 31.79 (205) | 4.50 (114) | 3.07 (78) | 5.00 (127) | 8.41 (214) | 5.77 (147) | 0.50 (13) | 4.75 (121) | 0.94 (24) | 25.30 (11.5) |
| SGH-22TF | 516860-073 | ANSI 250 | 2.00 (51) | 2.00 (51) | 31.79 (205) | 4.50 (114) | 3.07 (78) | 5.00 (127) | 8.41 (214) | 5.77 (147) | 0.50 (13) | 4.75 (121) | 0.94 (24) | 25.42 (11.5) |

- Dimensions and weights are for reference only. Dimensions are inches (mm) and weights are lbs (kg).
- Tolerance of ±0.125" (±3 mm) should be used
- For exact installation data, please write factory for certified dimensions



PRESSURE DROP CHART SUCTION GUIDES



TORONTO
+1 416 755 2291

BUFFALO
+1 716 693 8813

BIRMINGHAM
+44 8444 145 145

MANCHESTER
+44 8444 145 145

BANGALORE
+91 80 4906 3555

SHANGHAI
+86 21 5237 0909

SÃO PAULO
+55 11 4785 1330

LYON
+33 4 26 83 78 74

DUBAI
+971 4 887 6775

MANNHEIM
+49 621 3999 9858