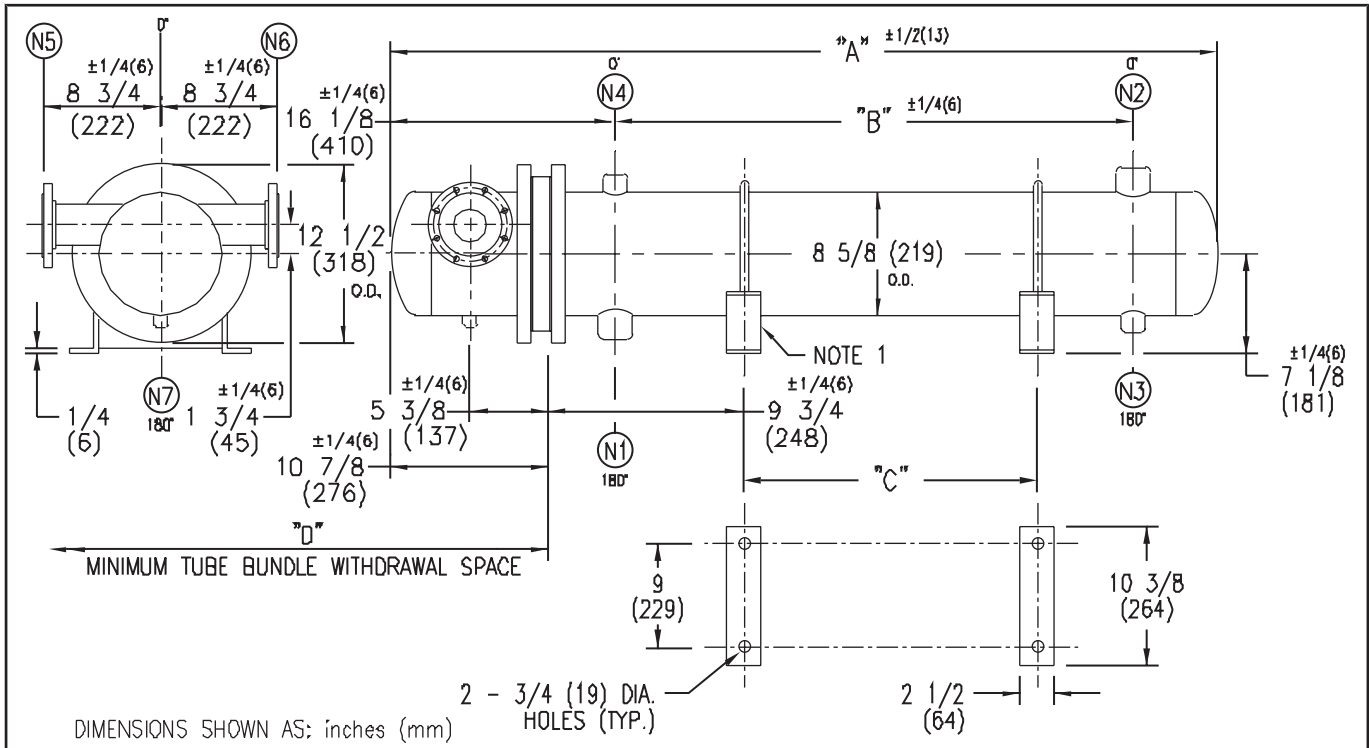


ARMSTRONG®



EXCHANGER SIZE *—BAFFLE SPACING	DIMENSIONS											
	A		B		C		D		N1		N2	
	inches	mm	inches	mm	inches	mm	inches	mm	inches	mm	inches	mm
W-82-4*-4	36 5/8	930	14 1/2	368	6	152	26	660	3	76	3	76
W-83-4*-4	48 5/8	1235	26 1/2	673	18	457	38	965	3	76	3	76
W-84-4*-4	60 5/8	1540	38 1/2	978	30	762	50	1270	3	76	3	76
W-85-4*-4	72 5/8	1845	50 1/2	1283	42	1067	62	1575	3	76	3	76
W-86-4*-4	84 5/8	2149	62 1/2	1588	54	1372	74	1880	3	76	3	76
W-87-4*-4	96 5/8	2454	74 1/2	1892	66	1676	86	2184	3	76	3	76
W-88-4*-4	108 5/8	2759	86 1/2	2197	78	1981	98	2489	3	76	3	76
W-89-4*-4	120 5/8	3064	98 1/2	2502	90	2286	110	2794	3	76	3	76
W-810-4*-4	132 5/8	3369	110 1/2	2807	102	2591	122	3099	3	76	3	76
W-811-4*-4	144 5/8	3673	122 1/2	3112	114	2896	134	3404	3	76	3	76
W-812-4*-4	156 5/8	3978	134 1/2	3416	126	3200	146	3708	3	76	3	76
W-813-4*-4	168 5/8	4283	146 1/2	3721	138	3505	158	4013	3	76	3	76
W-814-4*-4	180 5/8	4588	158 1/2	4026	150	3810	170	4318	3	76	3	76

NOZZLE SCHEDULE				
SERVICE	MARK	SHELL SIDE	MARK	TUBE SIDE
INLET	N1	AS PER TABLE	N5	2 (51) FLG
OUTLET	N2	AS PER TABLE	N6	2 (51) FLG
DRAIN	N3	1/2 (13) NPT	N7	1/2 (13) NPT
VENT	N4	3/4 (19) NPT		

NOTES: 1. SUPPORTS SUPPLIED ONLY IF SPECIFIED ON ORDER.
 2. NOZZLE SIZES SHOWN ARE RECOMMENDED FOR MAX. EXCHANGER LIFE, NO EXTERNAL FORCES APPLY.
 3. FABRICATED TO ASME CODE SECTION VIII DIVISION 1 AND LATEST ADDENDA.
 4. DRAWING IS NOT TO SCALE.
 5. ALL DIMN'S ±1/8 (3) UNLESS OTHERWISE SHOWN.

DESIGN CONDITIONS				
	SHELL		TUBES	
DESIGN PRESSURE	150 PSIG	1034 KPa	150 PSIG	1034 KPa
DESIGN TEMPERATURE	375 °F	191 °C	375 °F	191 °C
MIN. DESIGN METAL TEMP.	35 °F	1.7 °C	35 °F	1.7 °C
HYDRO. TEST PRESSURE	225 PSIG	1551 KPa	225 PSIG	1551 KPa
CONTENTS	WATER		WATER	

CUSTOMER:
 LOCATION:
 ENGINEER:
 ORDER No.:
 PROJECT/JOB:
 LOCATION:
 TAG: (QUOTE #)

TITLE G.A. 150 LB. W SERIES HEAT EXCHANGERS	A R M S T R O N G				NUMBER W-8-4P-4(3)	REV. A 2001 J.R.
DATE: 12 / 01 / 94 BY: D.C.R.	TORONTO - CANADA TEL : (416) 755-2291	MONTREAL - CANADA TEL : (514) 421-2424	BUFFALO - N. Y. TEL : (716) 693-8813	COLCHESTER - U.K. TEL : (44) 120-657-9491		