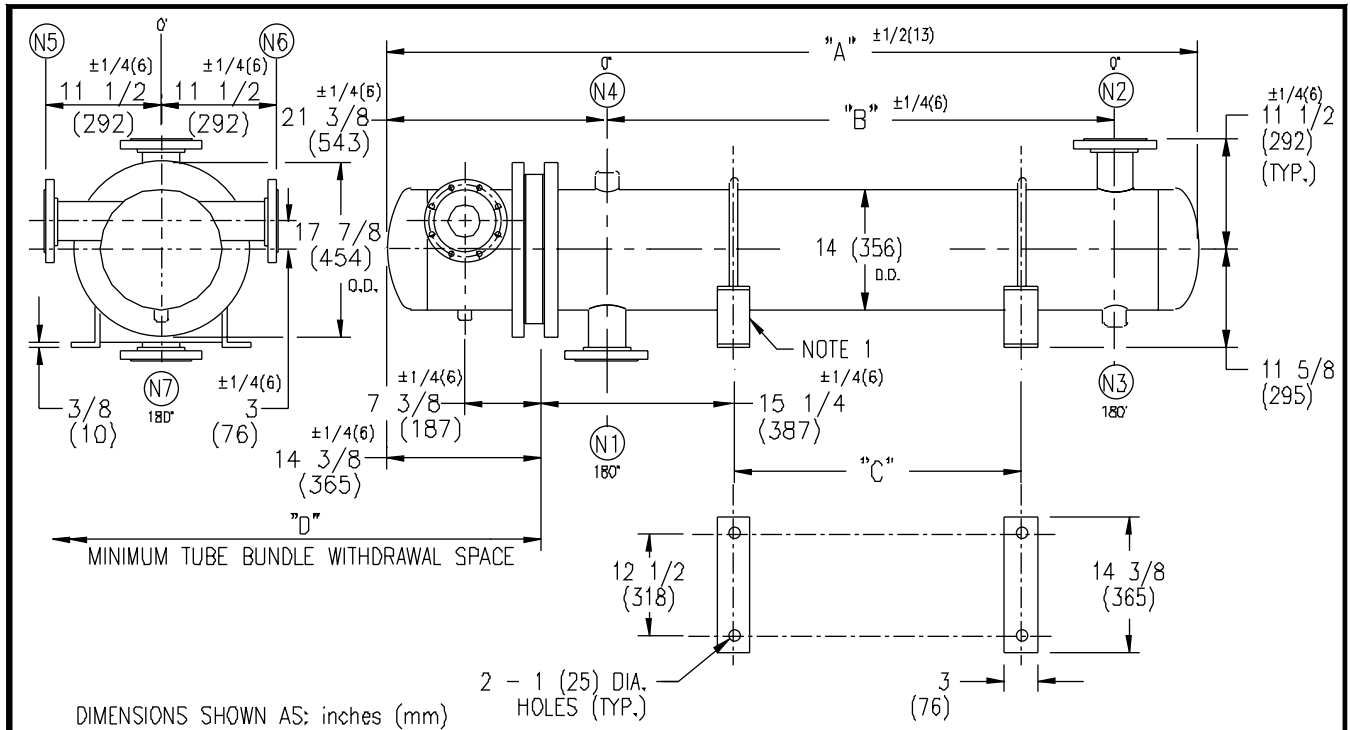


ARMSTRONG®



DIMENSIONS SHOWN AS: inches (mm)

EXCHANGER SIZE *-BAFFLE SPACING	DIMENSIONS											
	A		B		C		D		N1		N2	
	inches	mm	inches	mm	inches	mm	inches	mm	inches	mm	inches	mm
W-143-4*-4	52 3/8	1330	23	584	10	254	38	965	6	152	6	152
W-144-4*-4	64 3/8	1635	35	889	22	559	50	1270	6	152	6	152
W-145-4*-4	76 3/8	1940	47	1194	34	864	62	1575	6	152	6	152
W-146-4*-4	88 3/8	2245	59	1499	46	1168	74	1880	6	152	6	152
W-147-4*-4	100 3/8	2550	71	1803	58	1473	86	2184	6	152	6	152
W-148-4*-4	112 3/8	2854	83	2108	70	1778	98	2489	6	152	6	152
W-149-4*-4	124 3/8	3159	95	2413	82	2083	110	2794	6	152	6	152
W-1410-4*-4	136 3/8	3464	107	2718	94	2388	122	3099	6	152	6	152
W-1411-4*-4	148 3/8	3769	119	3023	106	2692	134	3404	6	152	6	152
W-1412-4*-4	160 3/8	4074	131	3327	118	2997	146	3708	6	152	6	152
W-1413-4*-4	172 3/8	4378	143	3632	130	3302	158	4013	6	152	6	152
W-1414-4*-4	184 3/8	4683	155	3937	142	3607	170	4318	6	152	6	152
W-1415-4*-4	196 3/8	4988	167	4242	154	3912	182	4623	6	152	6	152

NOZZLE SCHEDULE

SERVICE	MARK	SHELL SIDE	MARK	TUBE SIDE
INLET	N1	AS PER TABLE	N5	4 (102) FLG
OUTLET	N2	AS PER TABLE	N6	4 (102) FLG
DRAIN	N3	1/2 (13) NPT	N7	1/2 (13) NPT
VENT	N4	3/4 (19) NPT		

- NOTES:
1. SUPPORTS SUPPLIED ONLY IF SPECIFIED ON ORDER.
 2. NOZZLE SIZES SHOWN ARE RECOMMENDED FOR MAX. EXCHANGER LIFE, NO EXTERNAL FORCES APPLY.
 3. FABRICATED TO ASME CODE SECTION VIII DIVISION 1 AND LATEST ADDENDA.
 4. DRAWING IS NOT TO SCALE.
 5. ALL DIM'S $\pm 1/8$ (3) UNLESS OTHERWISE SHOWN.

DESIGN CONDITIONS

	SHELL		TUBES	
DESIGN PRESSURE	150 PSIG	1034 KPa	150 PSIG	1034 KPa
DESIGN TEMPERATURE	375 °F	191 °C	375 °F	191 °C
MIN. DESIGN METAL TEMP.	40 °F	4.4 °C	40 °F	4.4 °C
HYDRO. TEST PRESSURE	225 PSIG	1551 KPa	225 PSIG	1551 KPa
CONTENTS	WATER		WATER	

CUSTOMER:

LOCATION:

ENGINEER:

ORDER No.:

PROJECT/JOB:

LOCATION:

TAG:

(QUOTE #)

TITLE G.A. 150 LB. W SERIES HEAT EXCHANGERS	A R M S T R O N G				NUMBER W-14-4P-4(6)	REV. A ECO #9172 APRIL 16/03 J.R.
DATE: 12/01/94 BY: D.C.R.	TORONTO - CANADA TEL: (416) 755-2291	MONTREAL - CANADA TEL: (514) 421-2424	BUFFALO - N. Y. TEL: (716) 693-8813	COLCHESTER - U.K. TEL: (44) 120-657-9491		