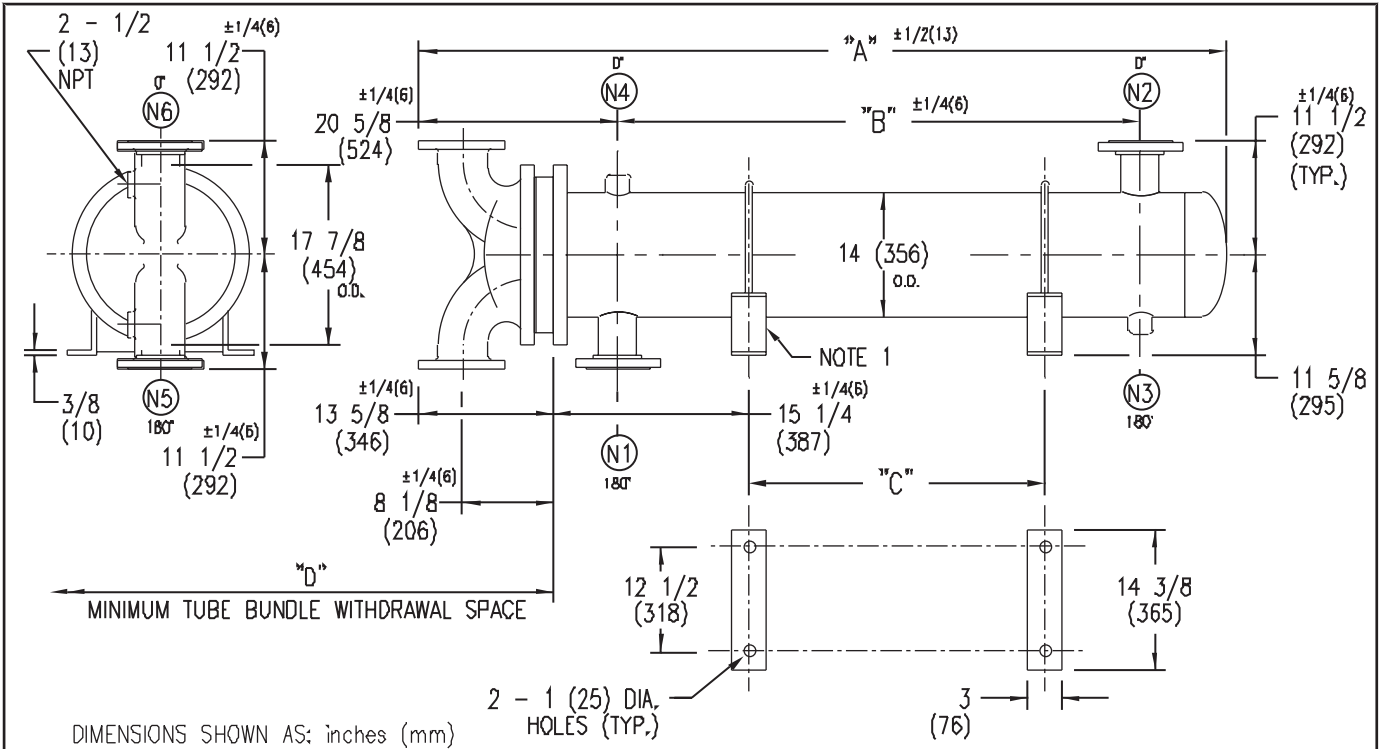


ARMSTRONG®



EXCHANGER SIZE *-BAFFLE SPACING	DIMENSIONS											
	A		B		C		D		N1		N2	
	inches	mm	inches	mm	inches	mm	inches	mm	inches	mm	inches	mm
W-143-2*-2	51-5/8	1311	23	584	10	250	38	965	4	102	4	102
W-144-2*-2	63 5/8	1616	35	889	22	559	50	1270	4	102	4	102
W-145-2*-2	75 5/8	1921	47	1194	34	864	62	1575	4	102	4	102
W-146-2*-2	87 5/8	2226	59	1499	46	1168	74	1880	4	102	4	102
W-147-2*-2	99 5/8	2530	71	1803	58	1473	86	2184	4	102	4	102
W-148-2*-2	111 5/8	2835	83	2108	70	1778	98	2489	4	102	4	102
W-149-2*-2	123 5/8	3140	95	2413	82	2083	110	2794	4	102	4	102
W-1410-2*-2	135 5/8	3445	107	2718	94	2388	122	3099	4	102	4	102
W-1411-2*-2	147 5/8	3750	119	3023	106	2692	134	3404	4	102	4	102
W-1412-2*-2	159 5/8	4054	131	3327	118	2997	146	3708	4	102	4	102
W-1413-2*-2	171 5/8	4359	143	3632	130	3302	158	4013	4	102	4	102
W-1414-2*-2	183 5/8	4664	155	3937	142	3607	170	4318	4	102	4	102
W-1415-2*-2	195 5/8	4969	167	4242	154	3912	182	4623	4	102	4	102

NOZZLE SCHEDULE				
SERVICE	MARK	SHELL SIDE	MARK	TUBE SIDE
INLET	N1	AS PER TABLE	N5	6 (152) FLG
OUTLET	N2	AS PER TABLE	N6	6 (152) FLG
DRAIN	N3	1/2 (13) NPT		
VENT	N4	3/4 (19) NPT		

NOTES: 1. SUPPORTS SUPPLIED ONLY IF SPECIFIED ON ORDER.
 2. NOZZLE SIZES SHOWN ARE RECOMMENDED FOR MAX. EXCHANGER LIFE, NO EXTERNAL FORCES APPLY.
 3. FABRICATED TO ASME CODE SECTION VIII DIVISION 1 AND LATEST ADDENDA.
 4. DRAWING IS NOT TO SCALE.
 5. ALL DIM'S ±1/8 (3) UNLESS OTHERWISE SHOWN.

DESIGN CONDITIONS				
	SHELL		TUBES	
DESIGN PRESSURE	150 PSIG	1034 KPa	150 PSIG	1034 KPa
DESIGN TEMPERATURE	375 °F	191 °C	375 °F	191 °C
MIN. DESIGN METAL TEMP.	40 °F	4.4 °C	40 °F	4.4 °C
HYDRO. TEST PRESSURE	225 PSIG	1551 KPa	300 PSIG	2068 KPa
CONTENTS	WATER		WATER	

CUSTOMER:
 LOCATION:
 ENGINEER:
 ORDER No.:
 PROJECT/JOB:
 LOCATION:
 TAG: (QUOTE #)

TITLE	G.A. 150 LB. W SERIES HEAT EXCHANGERS	A R M S T R O N G				NUMBER	W-14-2P-2(4)	REV. A 2001 J.R.
DATE:	12 / 01 / 94	BY:	D.C.R.	TORONTO - CANADA	MONTREAL - CANADA	BUFFALO - N. Y.	COLCHESTER - U.K.	
				TEL: (416) 755-2291	TEL: (514) 421-2424	TEL: (716) 693-8813	TEL: (44) 120-657-9491	