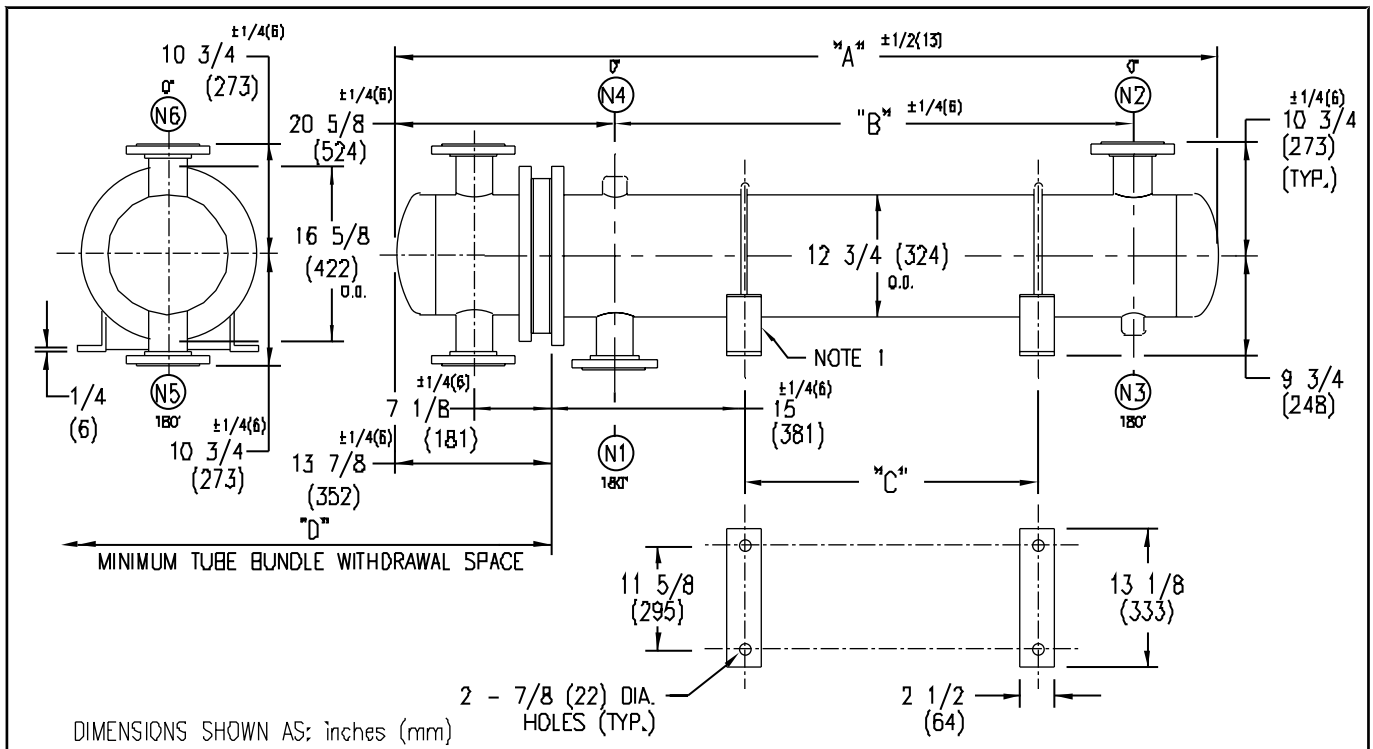


# ARMSTRONG®



EXCHANGER SIZE * - BAFFLE SPACING	DIMENSIONS											
	A		B		C		D		N1		N2	
	inches	mm	inches	mm	inches	mm	inches	mm	inches	mm	inches	mm
W-123-2*-4	51 7/8	1318	23	584	10	254	38	965	6	152	6	152
W-124-2*-4	63 7/8	1622	35	889	22	559	50	1270	6	152	6	152
W-125-2*-4	75 7/8	1927	47	1194	34	864	62	1575	6	152	6	152
W-126-2*-4	87 7/8	2232	59	1499	46	1168	74	1880	6	152	6	152
W-127-2*-4	99 7/8	2537	71	1803	58	1473	86	2184	6	152	6	152
W-128-2*-4	111 7/8	2842	83	2108	70	1778	98	2489	6	152	6	152
W-129-2*-4	123 7/8	3146	95	2413	82	2083	110	2794	6	152	6	152
W-1210-2*-4	135 7/8	3451	107	2718	94	2388	122	3099	6	152	6	152
W-1211-2*-4	147 7/8	3756	119	3023	106	2692	134	3404	6	152	6	152
W-1212-2*-4	159 7/8	4061	131	3327	118	2997	146	3708	6	152	6	152
W-1213-2*-4	171 7/8	4366	143	3632	130	3302	158	4013	6	152	6	152
W-1214-2*-4	183 7/8	4670	155	3937	142	3607	170	4318	6	152	6	152
W-1215-2*-4	195 7/8	4975	167	4242	154	3912	182	4623	6	152	6	152

NOZZLE SCHEDULE				
SERVICE	MARK	SHELL SIDE	MARK	TUBE SIDE
INLET	N1	AS PER TABLE	N5	4 (102) FLG
OUTLET	N2	AS PER TABLE	N6	4 (102) FLG
DRAIN	N3	1/2 (13) NPT		
VENT	N4	3/4 (19) NPT		

NOTES: 1. SUPPORTS SUPPLIED ONLY IF SPECIFIED ON ORDER.  
 2. NOZZLE SIZES SHOWN ARE RECOMMENDED FOR MAX. EXCHANGER LIFE, NO EXTERNAL FORCES APPLY.  
 3. FABRICATED TO ASME CODE SECTION VIII DIVISION 1 AND LATEST ADDENDA.  
 4. DRAWING IS NOT TO SCALE.  
 5. ALL DIM'S  $\pm 1/8$  (3) UNLESS OTHERWISE SHOWN.

DESIGN CONDITIONS				
	SHELL		TUBES	
DESIGN PRESSURE	15D PSIG	1034 KPa	150 PSIG	1034 KPa
DESIGN TEMPERATURE	375 °F	191 °C	375 °F	191 °C
MIN. DESIGN METAL TEMP.	35 °F	1.7 °C	35 °F	1.7 °C
HYDRO. TEST PRESSURE	225 PSIG	1551 KPa	225 PSIG	1551 KPa
CONTENTS	WATER		WATER	

CUSTOMER:  
 LOCATION:  
 ENGINEER:  
 ORDER No.:  
 PROJECT/JOB:  
 LOCATION:  
 TAG: (QUOTE # )

TITLE G.A. 15D LB. W SERIES HEAT EXCHANGERS	A R M S T R O N G				NUMBER W-12-2P-4(6)	REV. A C.O.#9159 FEB.5/03 J.R.
DATE: 12 / D1 / 94	BY: D.C.R.	TORONTO - CANADA TEL : (416) 755-2291	MONTREAL - CANADA TEL : (514) 421-2424	BUFFALO - N. Y. TEL : (716) 693-8813	COLCHESTER - U.K. TEL : (44) 120-657-9491	