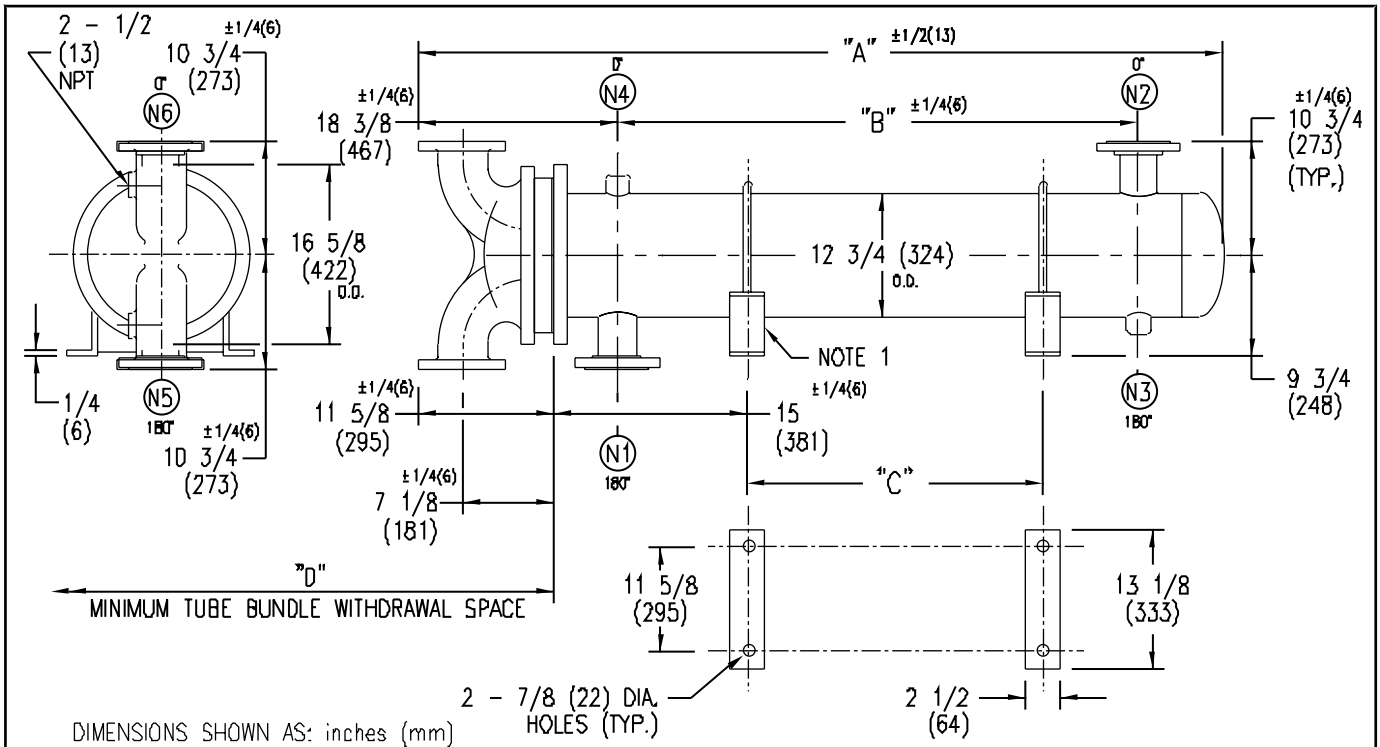


ARMSTRONG®



EXCHANGER SIZE *BAFFLE SPACING	DIMENSIONS											
	A		B		C		D		(N1)		(N2)	
	inches	mm	inches	mm	inches	mm	inches	mm	inches	mm	inches	mm
W-123-2*-2	49 5/8	1257	23	584	10	254	38	965	4	102	4	102
W-124-2*-2	61 5/8	1565	35	889	22	559	50	1270	4	102	4	102
W-125-2*-2	73 5/8	1870	47	1194	34	864	62	1575	4	102	4	102
W-126-2*-2	85 5/8	2175	59	1499	46	1168	74	1880	4	102	4	102
W-127-2*-2	97 5/8	2480	71	1803	58	1473	86	2184	4	102	4	102
W-128-2*-2	109 5/8	2784	83	2108	70	1778	98	2489	4	102	4	102
W-129-2*-2	121 5/8	3089	95	2413	82	2083	110	2794	4	102	4	102
W-1210-2*-2	133 5/8	3394	107	2718	94	2388	122	3099	4	102	4	102
W-1211-2*-2	145 5/8	3699	119	3023	106	2692	134	3404	4	102	4	102
W-1212-2*-2	157 5/8	4004	131	3327	118	2997	146	3708	4	102	4	102
W-1213-2*-2	169 5/8	4308	143	3632	130	3302	158	4013	4	102	4	102
W-1214-2*-2	181 5/8	4613	155	3937	142	3607	170	4318	4	102	4	102
W-1215-2*-2	193 5/8	4918	167	4242	154	3912	182	4623	4	102	4	102

NOZZLE SCHEDULE				
SERVICE	MARK	SHELL SIDE	MARK	TUBE SIDE
INLET	(N1)	AS PER TABLE	(N5)	4 (102) FLG
OUTLET	(N2)	AS PER TABLE	(N6)	4 (102) FLG
DRAIN	(N3)	1/2 (13) NPT		
VENT	(N4)	3/4 (19) NPT		

NOTES: 1. SUPPORTS SUPPLIED ONLY IF SPECIFIED ON ORDER.
 2. NOZZLE SIZES SHOWN ARE RECOMMENDED FOR MAX. EXCHANGER LIFE, NO EXTERNAL FORCES APPLY.
 3. FABRICATED TO ASME CODE SECTION VIII DIVISION 1 AND LATEST ADDENDA.
 4. DRAWING IS NOT TO SCALE.
 5. ALL DIMN'S ±1/8 (3) UNLESS OTHERWISE SHOWN.

DESIGN CONDITIONS				
	SHELL		TUBES	
DESIGN PRESSURE	150 PSIG	1034 KPa	150 PSIG	1034 KPa
DESIGN TEMPERATURE	375 °F	191 °C	375 °F	191 °C
MIN. DESIGN METAL TEMP.	35 °F	1.7 °C	35 °F	1.7 °C
HYDRO. TEST PRESSURE	225 PSIG	1551 KPa	300 PSIG	2068 KPa
CONTENTS	WATER		WATER	

CUSTOMER:
 LOCATION:
 ENGINEER:
 ORDER No.:
 PROJECT/JOB:
 LOCATION:
 TAG: (QUOTE #)

TITLE G.A. 150 LB. W SERIES HEAT EXCHANGERS	A R M S T R O N G				NUMBER W-12-2P-2(4)	REVA C.O.#9159 FEB.5/03 J.R.
DATE: 12/01/94 BY: D.C.R.	TORONTO - CANADA TEL: (416) 755-2291	MONTREAL - CANADA TEL: (514) 421-2424	BUFFALO - N. Y. TEL: (716) 693-8813	COLCHESTER - U.K. TEL: (44) 120-657-9491		