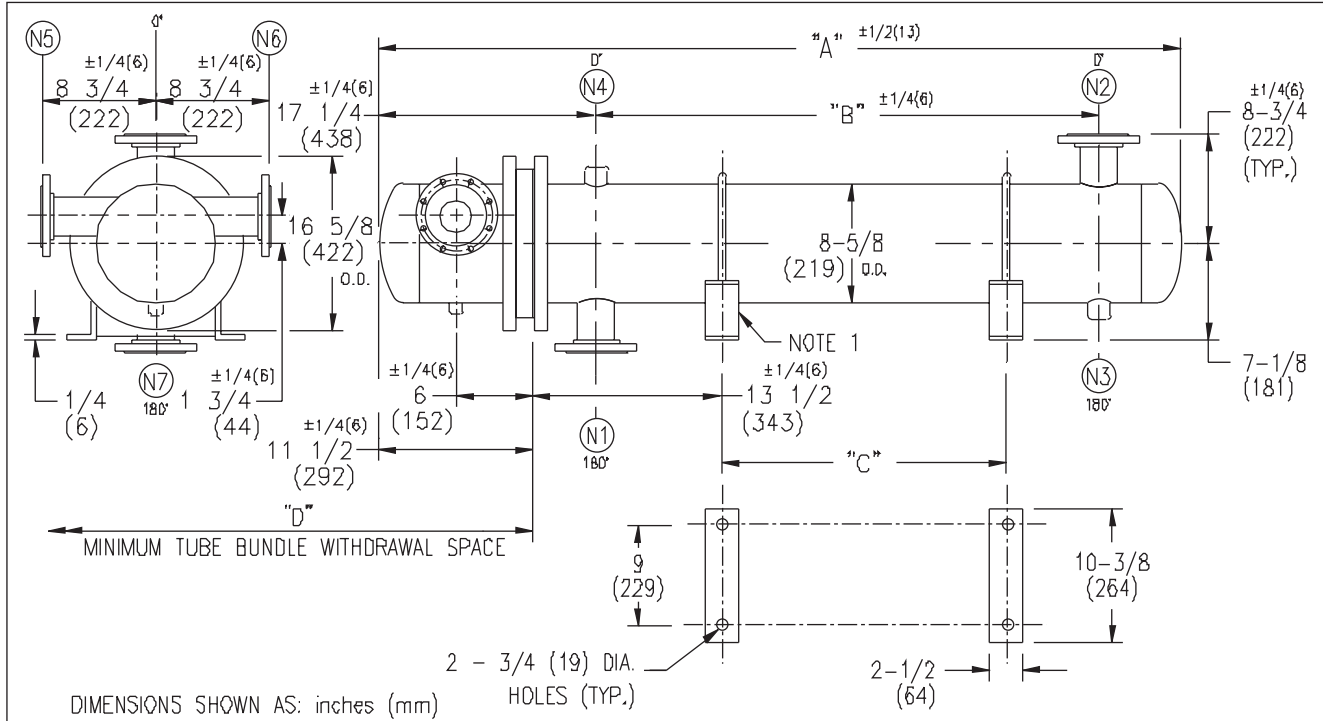


# ARMSTRONG®



DIMENSIONS SHOWN AS: inches (mm)

EXCHANGER SIZE *-BAFFLE SPACING	DIMENSIONS											
	A		B		C		D		N1		N2	
	inches	mm	inches	mm	inches	mm	inches	mm	inches	mm	inches	mm
W3T-82-4*-4	37 1/4	946	13 1/2	343	3 1/4	83	26	660	4	102	4	102
W3T-83-4*-4	49 1/4	1251	25 1/2	648	15 1/4	387	38	965	4	102	4	102
W3T-84-4*-4	61 1/4	1556	37 1/2	953	27 1/4	692	50	1270	4	102	4	102
W3T-85-4*-4	73 1/4	1861	49 1/2	1257	39 1/4	997	62	1574	4	102	4	102
W3T-86-4*-4	85 1/4	2165	61 1/2	1562	51 1/4	1302	74	1879	4	102	4	102
W3T-87-4*-4	97 1/4	2470	73 1/2	1867	63 1/4	1607	86	2184	4	102	4	102
W3T-88-4*-4	109 1/4	2775	85 1/2	2172	75 1/4	1911	98	2489	4	102	4	102
W3T-89-4*-4	121 1/4	3080	97 1/2	2477	87 1/4	2216	110	2794	4	102	4	102
W3T-810-4*-4	133 1/4	3385	109 1/2	2781	99 1/4	2521	122	3098	4	102	4	102
W3T-811-4*-4	145 1/4	3689	121 1/2	3086	111 1/4	2826	134	3403	4	102	4	102
W3T-812-4*-4	157 1/4	3994	133 1/2	3391	123 1/4	3131	146	3708	4	102	4	102
W3T-813-4*-4	169 1/4	4299	145 1/2	3696	135 1/4	3435	158	4013	4	102	4	102
W3T-814-4*-4	181 1/4	4604	157 1/2	4001	147 1/4	3740	170	4318	4	102	4	102

### NOZZLE SCHEDULE

SERVICE	MARK	SHELL SIDE	MARK	TUBE SIDE
INLET	N1	AS PER TABLE	N5	2 (51) 300# FLG.
OUTLET	N2	AS PER TABLE	N6	2 (51) 300# FLG.
DRAIN	N3	1/2 (13) NPT	N7	1/2 (13) NPT
VENT	N4	3/4 (19) NPT		

- NOTES: 1. SUPPORTS SUPPLIED ONLY IF SPECIFIED ON ORDER.  
 2. NOZZLE SIZES SHOWN ARE RECOMMENDED FOR MAX. EXCHANGER LIFE, NO EXTERNAL APPLY.  
 3. FABRICATED TO ASME CODE SECTION VIII DIVISION 1 AND LATEST ADDENDA.  
 4. DRAWING IS NOT TO SCALE.  
 5. ALL DIMN'S ±1/8 (3) UNLESS OTHERWISE SHOWN.

### DESIGN CONDITIONS

	SHELL		TUBES	
DESIGN PRESSURE	150 PSIG	1034 KPa	300 PSIG	2068 KPa
DESIGN TEMPERATURE	375 °F	191 °C	375 °F	191 °C
MIN. DESIGN METAL TEMP.	35 °F	1.7 °C	35 °F	1.7 °C
HYDRO. TEST PRESSURE	225 PSIG	1551 KPa	450 PSIG	3102 KPa
CONTENTS	WATER		WATER	

CUSTOMER:

LOCATION:

ENGINEER:

ORDER No.:

PROJECT/JOB:

LOCATION:

TAG: (QUOTE # )

TITLE	A R M S T R O N G				NUMBER	REV.
C.A. 300 LB. W SERIES HEAT EXCHANGERS	TORONTO - CANADA	MONTREAL - CANADA	BUFFALO - N. Y.	COLCHESTER - U.K.	W3T-8-4P-4(4)	
DATE: 01 / 05 / 01 BY: J.R.	TEL : (416) 755-2291	TEL : (514) 421-2424	TEL : (716) 693-8813	TEL : (44) 120-657-9491		