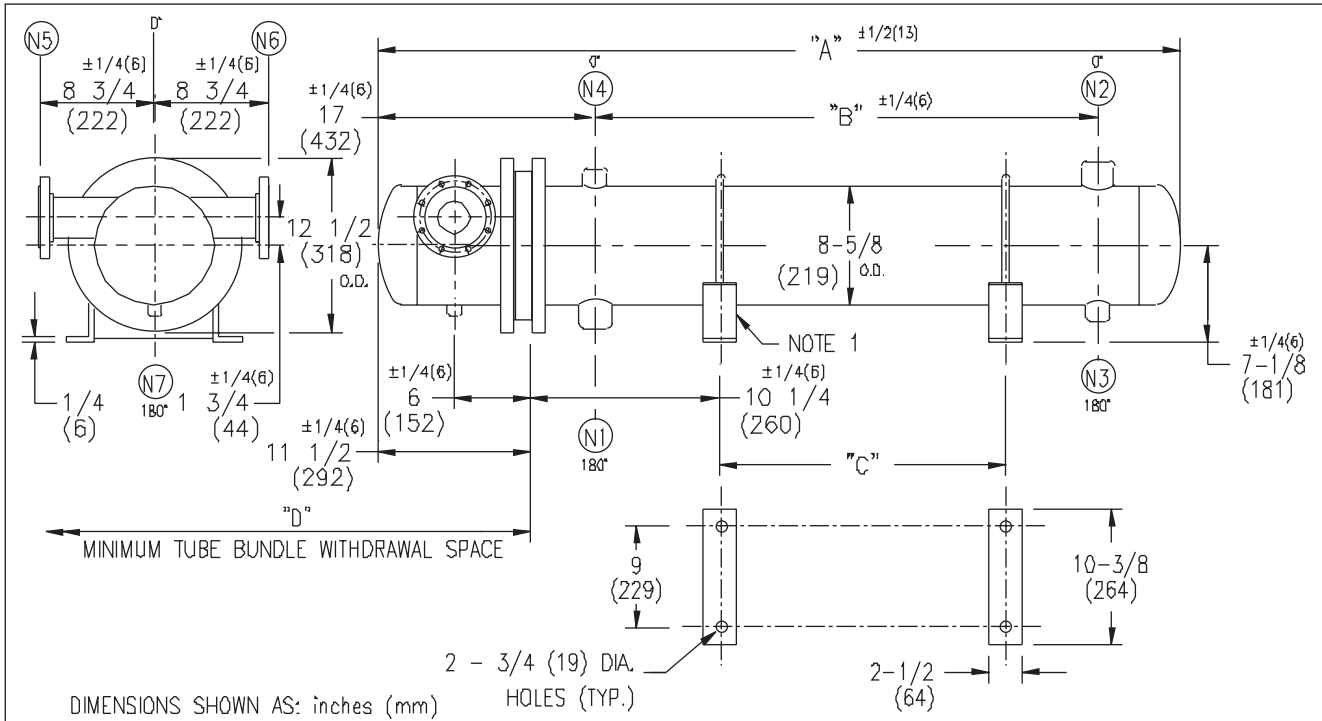


ARMSTRONG®



DIMENSIONS SHOWN AS: inches (mm)

EXCHANGER SIZE *—BAFFLE SPACING	DIMENSIONS											
	A		B		C		D		N1		N2	
	inches	mm	inches	mm	inches	mm	inches	mm	inches	mm	inches	mm
W3T-82-4*-4	37 1/4	946	14	356	6 3/4	171	26	660	3	76	3	76
W3T-83-4*-4	49 1/4	1251	26	661	18 3/4	476	38	965	3	76	3	76
W3T-84-4*-4	61 1/4	1556	38	966	30 3/4	781	50	1270	3	76	3	76
W3T-85-4*-4	73 1/4	1861	50	1270	42 3/4	1085	62	1574	3	76	3	76
W3T-86-4*-4	85 1/4	2165	62	1575	54 3/4	1390	74	1879	3	76	3	76
W3T-87-4*-4	97 1/4	2470	74	1880	66 3/4	1695	86	2184	3	76	3	76
W3T-88-4*-4	109 1/4	2775	86	2185	78 3/4	2000	98	2489	3	76	3	76
W3T-89-4*-4	121 1/4	3080	98	2490	90 3/4	2305	110	2794	3	76	3	76
W3T-810-4*-4	133 1/4	3385	110	2794	102 3/4	2609	122	3098	3	76	3	76
W3T-811-4*-4	145 1/4	3689	122	3099	114 3/4	2914	134	3403	3	76	3	76
W3T-812-4*-4	157 1/4	3994	134	3404	126 3/4	3219	146	3708	3	76	3	76
W3T-813-4*-4	169 1/4	4299	146	3709	138 3/4	3524	158	4013	3	76	3	76
W3T-814-4*-4	181 1/4	4604	158	4014	150 3/4	3829	170	4318	3	76	3	76

NOZZLE SCHEDULE				
SERVICE	MARK	SHELL SIDE	MARK	TUBE SIDE
INLET	N1	AS PER TABLE	N5	2 (51) 300# FLG.
OUTLET	N2	AS PER TABLE	N6	2 (51) 300# FLG.
DRAIN	N3	1/2 (13) NPT	N7	1/2 (13) NPT
VENT	N4	3/4 (19) NPT		

- NOTES:
1. SUPPORTS SUPPLIED ONLY IF SPECIFIED ON ORDER.
 2. NOZZLE SIZES SHOWN ARE RECOMMENDED FOR MAX. EXCHANGER LIFE, NO EXTERNAL FORCES APPLY.
 3. FABRICATED TO ASME CODE SECTION VIII DIVISION 1 AND LATEST ADDENDA.
 4. DRAWING IS NOT TO SCALE.
 5. ALL DIM'S ±1/8 (3) UNLESS OTHERWISE SHOWN.

DESIGN CONDITIONS				
	SHELL		TUBES	
DESIGN PRESSURE	150 PSIG	1034 KPa	300 PSIG	2068 KPa
DESIGN TEMPERATURE	375 °F	191 °C	375 °F	191 °C
MIN. DESIGN METAL TEMP.	35 °F	1.7 °C	35 °F	1.7 °C
HYDRO. TEST PRESSURE	225 PSIG	1551 KPa	450 PSIG	3102 KPa
CONTENTS	WATER		WATER	

CUSTOMER:
LOCATION:
ENGINEER:
ORDER No.:
PROJECT/JOB:
LOCATION:
TAG: (QUOTE #)

TITLE G.A. 300 LB. W SERIES HEAT EXCHANGERS	A R M S T R O N G				NUMBER W3T-8-4P-4(3)	REV.
DATE: 02 / 01 / 01 BY: J.R.	TORONTO - CANADA TEL : (416) 755-2291	MONTREAL - CANADA TEL : (514) 421-2424	BUFFALO - N. Y. TEL: (716) 693-8813	COLCHESTER - U.K. TEL: (44) 120-657-9491		