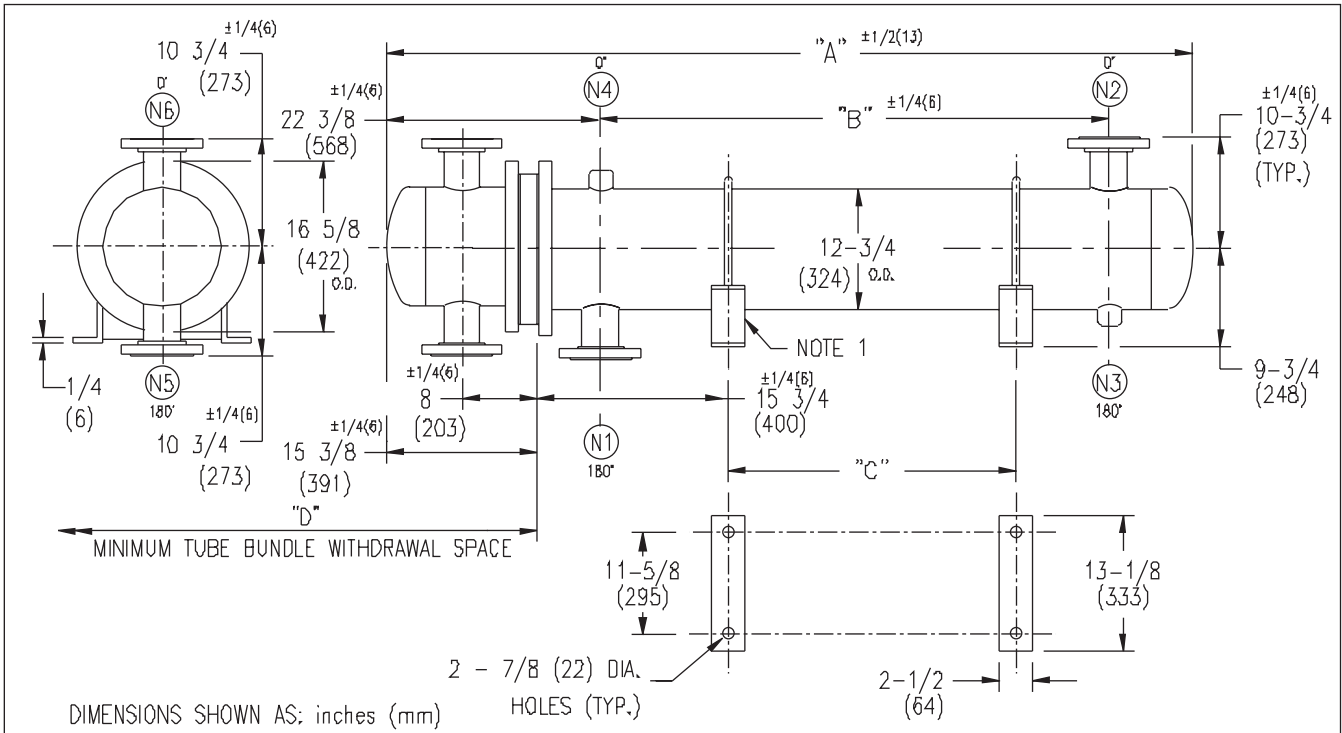


ARMSTRONG®



DIMENSIONS SHOWN AS: inches (mm)

HOLES (TYP.)

EXCHANGER SIZE *BAFFLE SPACING	DIMENSIONS											
	A		B		C		D		N1		N2	
	inches	mm	inches	mm	inches	mm	inches	mm	inches	mm	inches	mm
W3T-123-2*-4	53 1/2	1359	22 3/4	578	11 1/2	292	38	965	6	152	6	152
W3T-124-2*-4	65 1/2	1664	34 3/4	883	23 1/2	597	50	1270	6	152	6	152
W3T-125-2*-4	77 1/2	1969	46 3/4	1187	35 1/2	902	62	1574	6	152	6	152
W3T-126-2*-4	89 1/2	2273	58 3/4	1492	47 1/2	1207	74	1879	6	152	6	152
W3T-127-2*-4	101 1/2	2578	70 3/4	1797	59 1/2	1511	86	2184	6	152	6	152
W3T-128-2*-4	113 1/2	2883	82 3/4	2102	71 1/2	1816	98	2489	6	152	6	152
W3T-129-2*-4	125 1/2	3188	94 3/4	2407	83 1/2	2121	110	2794	6	152	6	152
W3T-1210-2*-4	137 1/2	3493	106 3/4	2711	95 1/2	2426	122	3098	6	152	6	152
W3T-1211-2*-4	149 1/2	3797	118 3/4	3016	107 1/2	2731	134	3403	6	152	6	152
W3T-1212-2*-4	161 1/2	4102	130 3/4	3321	119 1/2	3035	146	3708	6	152	6	152
W3T-1213-2*-4	173 1/2	4407	142 3/4	3626	131 1/2	3340	158	4013	6	152	6	152
W3T-1214-2*-4	185 1/2	4712	154 3/4	3931	143 1/2	3645	170	4318	6	152	6	152
W3T-1215-2*-4	197 1/2	5017	166 3/4	4235	155 1/2	3950	182	4623	6	152	6	152

NOZZLE SCHEDULE

SERVICE	MARK	SHELL SIDE	MARK	TUBE SIDE
INLET	(N1)	AS PER TABLE	(N5)	4 (102) 300# (RFSS) FLG.
OUTLET	(N2)	AS PER TABLE	(N6)	4 (102) 300# (RFSS) FLG.
DRAIN	(N3)	1/2 (13) NPT		
VENT	(N4)	3/4 (19) NPT		

- NOTES: 1. SUPPORTS SUPPLIED ONLY IF SPECIFIED ON ORDER.
 2. NOZZLE SIZES SHOWN ARE RECOMMENDED FOR MAX. EXCHANGER LIFE, NO EXTERNAL FORCES APPLY.
 3. FABRICATED TO ASME CODE SECTION VIII DIVISION 1 AND LATEST ADDENDA.
 4. DRAWING IS NOT TO SCALE.
 5. ALL DIM'S ±1/8 (3) UNLESS OTHERWISE SHOWN.

DESIGN CONDITIONS

	SHELL		TUBES	
DESIGN PRESSURE	150 PSIG	1034 KP _a	300 PSIG	2068 KP _a
DESIGN TEMPERATURE	375 °F	191 °C	375 °F	191 °C
MIN. DESIGN METAL TEMP.	35 °F	1.7 °C	35 °F	1.7 °C
HYDRO. TEST PRESSURE	225 PSIG	1551 KP _a	450 PSIG	3102 KP _a
CONTENTS	WATER		WATER	

CUSTOMER: _____
 LOCATION: _____
 ENGINEER: _____
 ORDER No.: _____
 PROJECT/JOB: _____
 LOCATION: _____
 TAG: _____ (QUOTE # _____)

TITLE G.A. 300 LB. W SERIES HEAT EXCHANGERS	A R M S T R O N G				NUMBER W3T-12-2P-4(6)	REV.
DATE: 04 / 04 / 01 BY: J.R.	TORONTO - CANADA TEL: (416) 755-2291	MONTREAL - CANADA TEL: (514) 421-2424	BUFFALO - N. Y. TEL: (716) 693-8813	DOLCHESTER - U.K. TEL: (44) 120-657-9491		