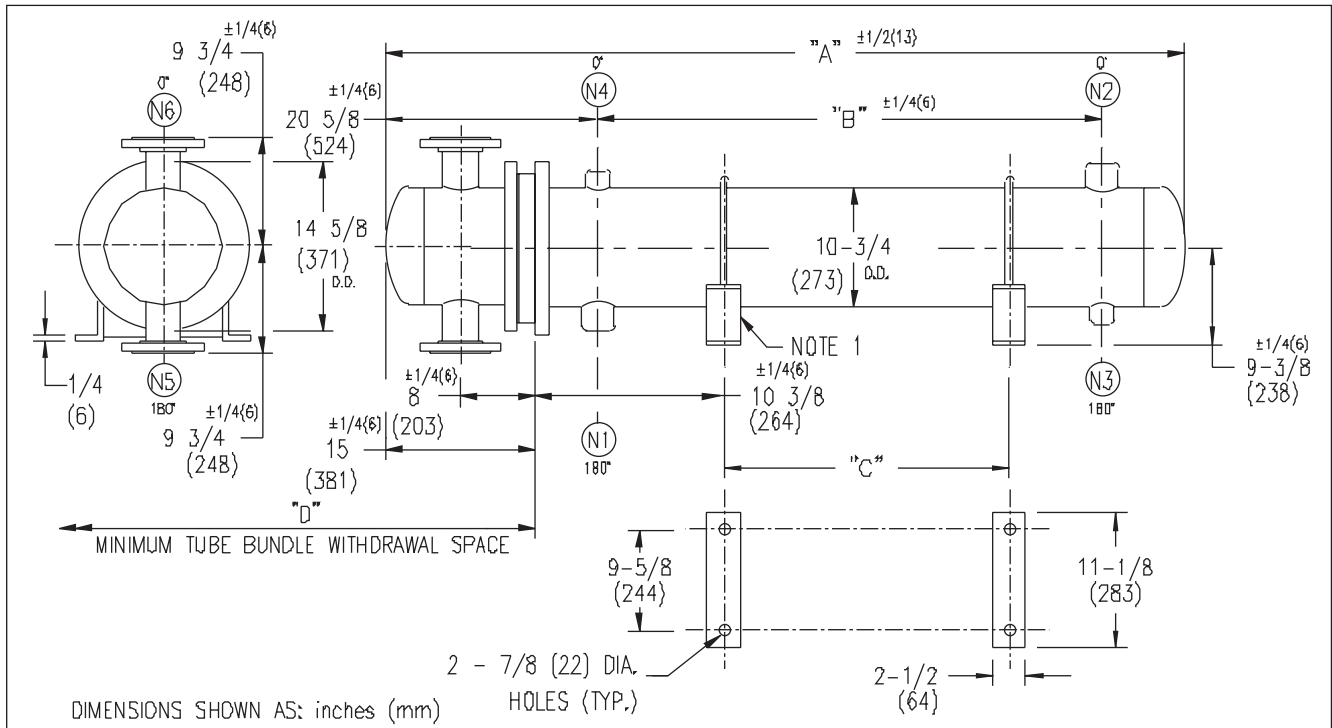


ARMSTRONG®



EXCHANGER SIZE * - BAFFLE SPACING	DIMENSIONS											
	A		B		C		D		N1		N2	
	inches	mm	inches	mm	inches	mm	inches	mm	inches	mm	inches	mm
W3T-1D2-2*-4	41 3/8	1051	14	356	6 3/4	171	26	660	3	76	3	76
W3T-1D3-2*-4	53 3/8	1356	26	661	18 3/4	476	38	965	3	76	3	76
W3T-1D4-2*-4	65 3/8	1661	38	966	30 3/4	781	50	1270	3	76	3	76
W3T-1D5-2*-4	77 3/8	1965	50	1270	42 3/4	1085	62	1574	3	76	3	76
W3T-1D6-2*-4	89 3/8	2270	62	1575	54 3/4	1390	74	1879	3	76	3	76
W3T-1D7-2*-4	101 3/8	2575	74	1880	66 3/4	1695	86	2184	3	76	3	76
W3T-1D8-2*-4	113 3/8	2880	86	2185	78 3/4	2000	98	2489	3	76	3	76
W3T-1D9-2*-4	125 3/8	3185	98	2490	90 3/4	2305	110	2794	3	76	3	76
W3T-1D10-2*-4	137 3/8	3489	110	2794	102 3/4	2609	122	3098	3	76	3	76
W3T-1D11-2*-4	149 3/8	3794	122	3099	114 3/4	2914	134	3403	3	76	3	76
W3T-1D12-2*-4	161 3/8	4099	134	3404	126 3/4	3219	146	3708	3	76	3	76
W3T-1D13-2*-4	173 3/8	4404	146	3709	138 3/4	3524	158	4013	3	76	3	76
W3T-1D14-2*-4	185 3/8	4709	158	4014	150 3/4	3829	170	4318	3	76	3	76
W3T-1D15-2*-4	197 3/8	5013	170	4318	162 3/4	4134	182	4623	3	76	3	76

NOZZLE SCHEDULE

SERVICE	MARK	SHELL SIDE	MARK	TUBE SIDE
INLET	(N1)	AS PER TABLE	(N5)	4 (102) 300# FLG.
OUTLET	(N2)	AS PER TABLE	(N6)	4 (102) 300# FLG.
DRAIN	(N3)	1/2 (13) NPT		
VENT	(N4)	3/4 (19) NPT		

- NOTES:
1. SUPPORTS SUPPLIED ONLY IF SPECIFIED ON ORDER.
 2. NOZZLE SIZES SHOWN ARE RECOMMENDED FOR MAX. EXCHANGER LIFE, NO EXTERNAL FORCES APPLY.
 3. FABRICATED TO ASME CODE SECTION VIII DIVISION 1 AND LATEST ADDENDA.
 4. DRAWING IS NOT TO SCALE.
 5. ALL DIM'S $\pm 1/8$ (3) UNLESS OTHERWISE SHOWN.

DESIGN CONDITIONS

	SHELL		TUBES	
DESIGN PRESSURE	150 PSIG	1034 KPa	300 PSIG	2068 KPa
DESIGN TEMPERATURE	375 °F	191 °C	375 °F	191 °C
MIN. DESIGN METAL TEMP.	35 °F	1.7 °C	35 °F	1.7 °C
HYDRO. TEST PRESSURE	225 PSIG	1551 KPa	450 PSIG	3102 KPa
CONTENTS	WATER		WATER	

CUSTOMER:
LOCATION:

ENGINEER:
ORDER No.:

PROJECT/JOB:
LOCATION:

TAG:

(QUOTE #)

TITLE	A R M S T R O N G				NUMBER	REV.
G.A. 300 LB. W SERIES HEAT EXCHANGERS	TORONTO - CANADA	MONTREAL - CANADA	BUFFALO - N. Y.	COLCHESTER - U.K.	W3T-10-2P-4(3)	
DATE: D2 /20 /01 BY: J.R.	TEL: (416) 755-2291	TEL: (514) 421-2424	TEL: (716) 693-8813	TEL: (44) 120-657-9491		