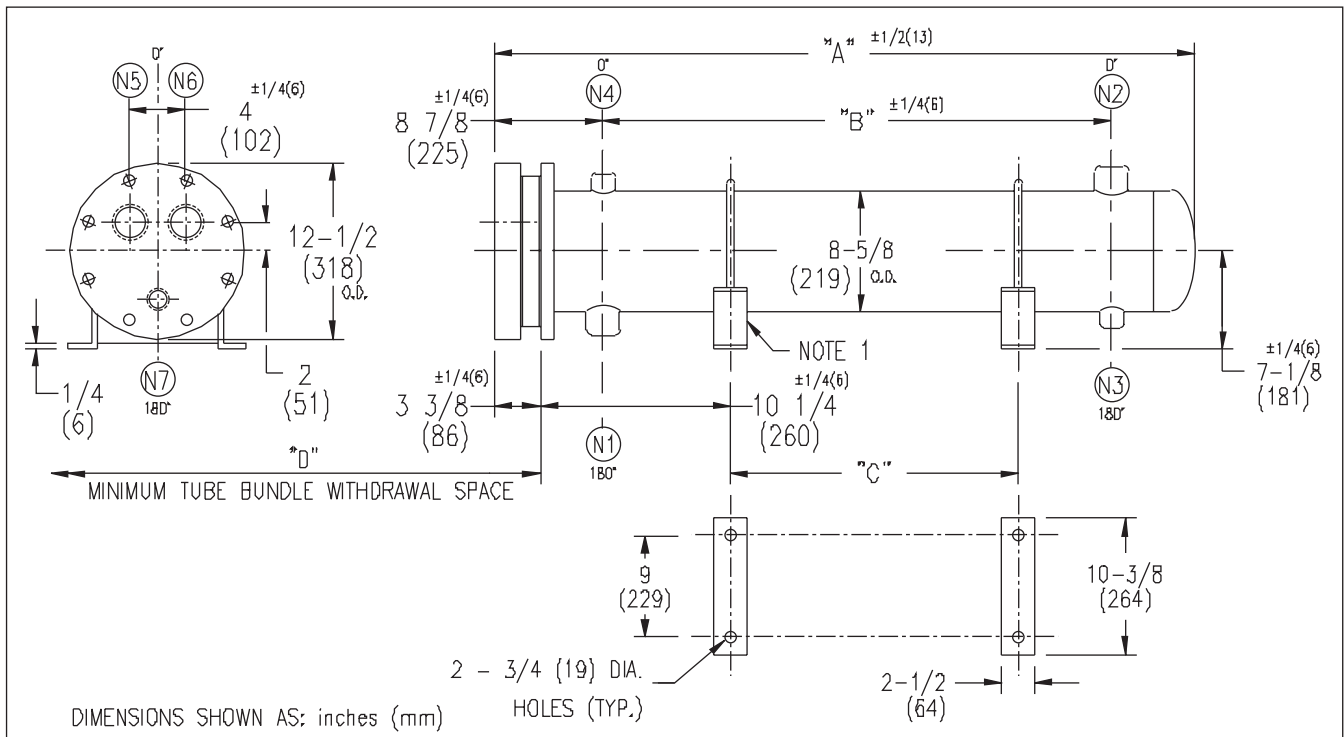


ARMSTRONG®



EXCHANGER SIZE *—BAFFLE SPACING	DIMENSIONS											
	A		B		C		D		N1		N2	
	inches	mm	inches	mm	inches	mm	inches	mm	inches	mm	inches	mm
W3H-82-4*-3	29 1/8	740	14	356	6 3/4	171	26	660	3	76	3	76
W3H-83-4*-3	41 1/8	1045	26	661	18 3/4	476	38	965	3	76	3	76
W3H-84-4*-3	53 1/8	1350	38	966	30 3/4	781	50	1270	3	76	3	76
W3H-85-4*-3	65 1/8	1654	50	1270	42 3/4	1085	62	1574	3	76	3	76
W3H-86-4*-3	77 1/8	1959	62	1575	54 3/4	1390	74	1879	3	76	3	76
W3H-87-4*-3	89 1/8	2264	74	1880	66 3/4	1695	86	2184	3	76	3	76
W3H-88-4*-3	101 1/8	2569	86	2185	78 3/4	2000	98	2489	3	76	3	76
W3H-89-4*-3	113 1/8	2874	98	2490	90 3/4	2305	110	2794	3	76	3	76
W3H-810-4*-3	125 1/8	3178	110	2794	102 3/4	2609	122	3098	3	76	3	76
W3H-811-4*-3	137 1/8	3483	122	3099	114 3/4	2914	134	3403	3	76	3	76
W3H-812-4*-3	149 1/8	3788	134	3404	126 3/4	3219	146	3708	3	76	3	76
W3H-813-4*-3	161 1/8	4093	146	3709	138 3/4	3524	158	4013	3	76	3	76
W3H-814-4*-3	173 1/8	4398	158	4014	150 3/4	3829	170	4318	3	76	3	76

NOZZLE SCHEDULE				
SERVICE	MARK	SHELL SIDE	MARK	TUBE SIDE
INLET	N1	AS PER TABLE	N5	2 (51) NPT
OUTLET	N2	AS PER TABLE	N6	2 (51) NPT
DRAIN	N3	1/2 (13) NPT	N7	1/2 (13) NPT
VENT	N4	3/4 (19) NPT		

NOTES: 1. SUPPORTS SUPPLIED ONLY IF SPECIFIED ON ORDER.
 2. NOZZLE SIZES SHOWN ARE RECOMMENDED FOR MAX. EXCHANGER LIFE, NO EXTERNAL FORCES APPLY.
 3. FABRICATED TO ASME CODE SECTION VIII DIVISION 1 AND LATEST ADDENDA.
 4. DRAWING IS NOT TO SCALE.
 5. ALL DIM'S ±1/8 (3) UNLESS OTHERWISE SHOWN.

DESIGN CONDITIONS				
	SHELL		TUBES	
DESIGN PRESSURE	300 PSIG	2068 KPa	300 PSIG	2068 KPa
DESIGN TEMPERATURE	375 °F	191 °C	375 °F	191 °C
MIN. DESIGN METAL TEMP.	35 °F	1.7 °C	35 °F	1.7 °C
HYDRO. TEST PRESSURE	450 PSIG	3102 KPa	450 PSIG	3102 KPa
CONTENTS	WATER		WATER	

CUSTOMER:
 LOCATION:
 ENGINEER:
 ORDER No.:
 PROJECT/JOB:
 LOCATION:
 TAG: (QUOTE #)

TITLE G.A. 300 LB. W SERIES HEAT EXCHANGERS	A R M S T R O N G				NUMBER W3H-8-4P-3(3)	REV.
DATE: 01 / 30 / 01 BY: J.R.	TORONTO - CANADA TEL : (416) 755-2291	MONTREAL - CANADA TEL : (514) 421-2424	BUFFALO - N. Y. TEL: (716) 693-8813	DOLCHESTER - U.K. TEL: (44) 120-657-9491		