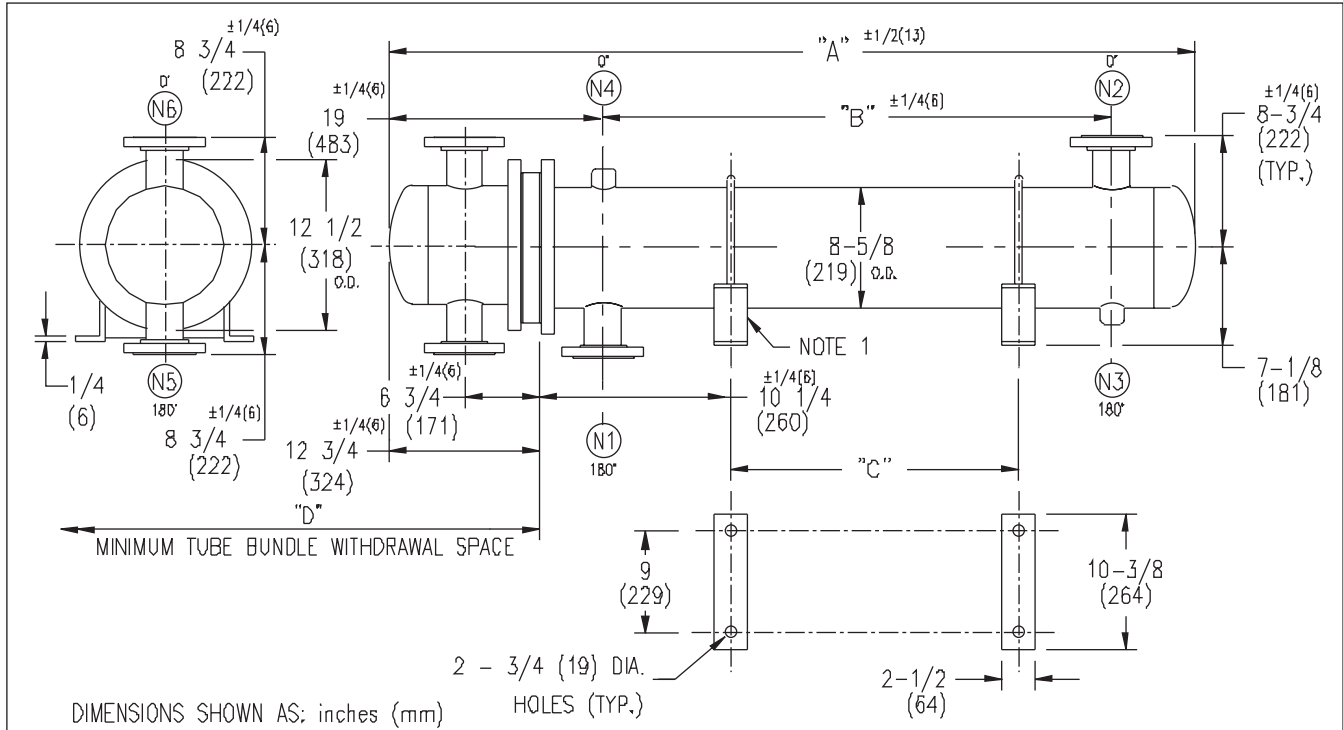


ARMSTRONG®



EXCHANGER SIZE *—BAFFLE SPACING	DIMENSIONS											
	A		B		C		D		N1		N2	
	inches	mm	inches	mm	inches	mm	inches	mm	inches	mm	inches	mm
W3H-82-2*-4	38 1/2	978	13	330	2 3/4	70	26	660	4	102	4	102
W3H-83-2*-4	50 1/2	1283	25	635	14 3/4	375	38	965	4	102	4	102
W3H-84-2*-4	62 1/2	1588	37	940	26 3/4	679	50	1270	4	102	4	102
W3H-85-2*-4	74 1/2	1892	49	1245	38 3/4	940	62	1574	4	102	4	102
W3H-86-2*-4	86 1/2	2197	61	1549	50 3/4	1289	74	1879	4	102	4	102
W3H-87-2*-4	98 1/2	2502	73	1854	62 3/4	1594	86	2184	4	102	4	102
W3H-88-2*-4	110 1/2	2807	85	2159	74 3/4	1899	98	2489	4	102	4	102
W3H-89-2*-4	122 1/2	3112	97	2464	86 3/4	2203	110	2794	4	102	4	102
W3H-810-2*-4	134 1/2	3416	109	2769	98 3/4	2508	122	3098	4	102	4	102
W3H-811-2*-4	146 1/2	3721	121	3073	110 3/4	2813	134	3403	4	102	4	102
W3H-812-2*-4	158 1/2	4026	133	3378	122 3/4	3118	146	3708	4	102	4	102
W3H-813-2*-4	170 1/2	4331	145	3683	134 3/4	3423	158	4013	4	102	4	102
W3H-814-2*-4	182 1/2	4636	157	3989	146 3/4	3727	170	4318	4	102	4	102

NOZZLE SCHEDULE				
SERVICE	MARK	SHELL SIDE	MARK	TUBE SIDE
INLET	N1	AS PER TABLE	N5	3 (76) 300# FLG.
OUTLET	N2	AS PER TABLE	N6	3 (76) 300# FLG.
DRAIN	N3	1/2 (13) NPT		
VENT	N4	3/4 (19) NPT		

NOTES: 1. SUPPORTS SUPPLIED ONLY IF SPECIFIED ON ORDER.
 2. NOZZLE SIZES SHOWN ARE RECOMMENDED FOR MAX. EXCHANGER LIFE, NO EXTERNAL FORCES APPLY.
 3. FABRICATED TO ASME CODE SECTION VIII DIVISION 1 AND LATEST ADDENDA.
 4. DRAWING IS NOT TO SCALE.
 5. ALL DIM'S ±1/8 (3) UNLESS OTHERWISE SHOWN.

DESIGN CONDITIONS				
	SHELL		TUBES	
DESIGN PRESSURE	300 PSIG	2068 KP _a	300 PSIG	2068 KP _a
DESIGN TEMPERATURE	375 °F	191 °C	375 °F	191 °C
MIN. DESIGN METAL TEMP.	35 °F	1.7 °C	35 °F	1.7 °C
HYDRO. TEST PRESSURE	450 PSIG	3102 KP _a	450 PSIG	3102 KP _a
CONTENTS	WATER		WATER	

CUSTOMER:
 LOCATION:
 ENGINEER:
 ORDER No.:
 PROJECT/JOB:
 LOCATION:
 TAG: (QUOTE #)

TITLE G.A. 300 LB. W SERIES HEAT EXCHANGERS	A R M S T R O N G				NUMBER W3H-8-2P-4(4)	REV.
DATE: 02 / 01 / 01 BY: J.R.	TORONTO - CANADA TEL: (416) 755-2291	MONTREAL - CANADA TEL: (514) 421-2424	BUFFALO - N. Y. TEL: (716) 693-8813	DORCHESTER - U.K. TEL: (44) 120-657-9491		