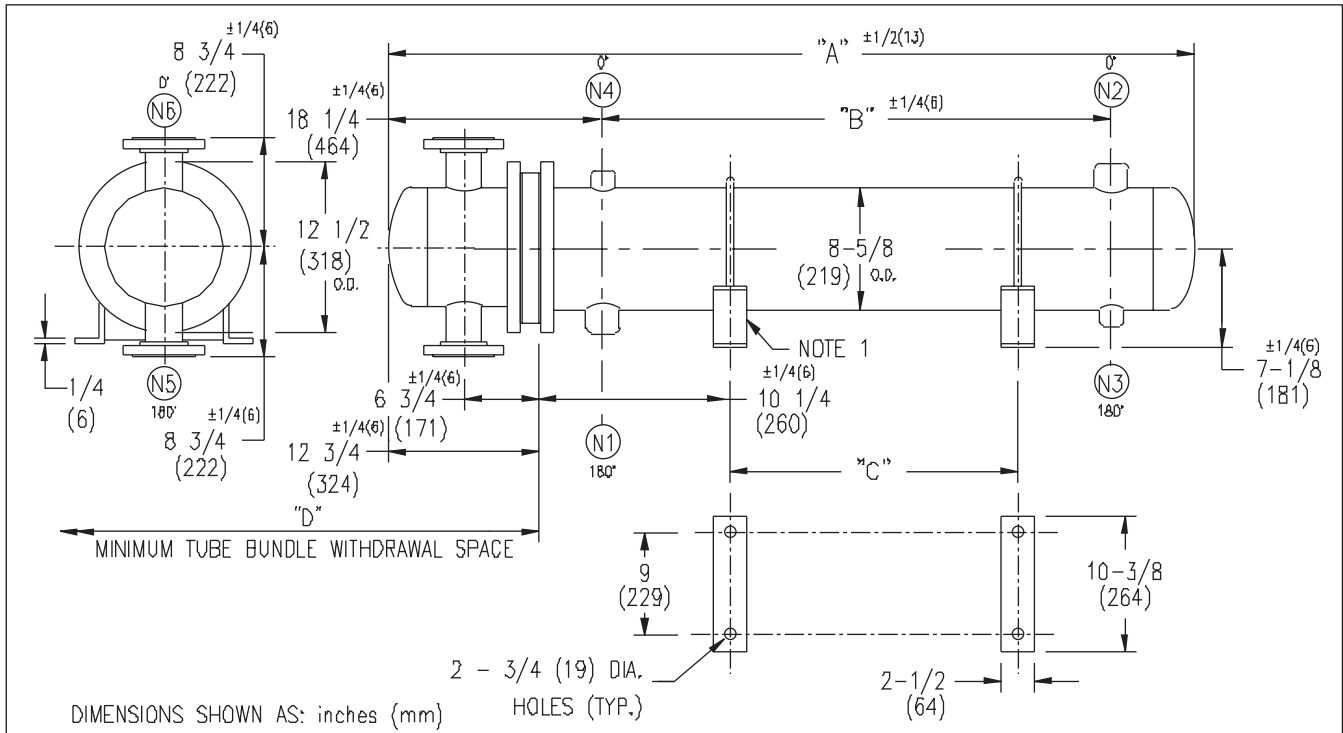


# ARMSTRONG®



DIMENSIONS SHOWN AS: inches (mm)

HOLES (TYP.)

EXCHANGER SIZE *BAFFLE SPACING	DIMENSIONS											
	A		B		C		D		N1		N2	
	inches	mm	inches	mm	inches	mm	inches	mm	inches	mm	inches	mm
W3H-82-2*-4	38 1/2	978	14	356	6 3/4	171	26	660	3	76	3	76
W3H-83-2*-4	50 1/2	1283	26	661	18 3/4	476	38	965	3	76	3	76
W3H-84-2*-4	62 1/2	1588	38	966	30 3/4	781	50	1270	3	76	3	76
W3H-85-2*-4	74 1/2	1892	50	1270	42 3/4	1085	62	1574	3	76	3	76
W3H-86-2*-4	86 1/2	2197	62	1575	54 3/4	1390	74	1879	3	76	3	76
W3H-87-2*-4	98 1/2	2502	74	1880	66 3/4	1695	86	2184	3	76	3	76
W3H-88-2*-4	110 1/2	2807	86	2185	78 3/4	2000	98	2489	3	76	3	76
W3H-89-2*-4	122 1/2	3112	98	2490	90 3/4	2305	110	2794	3	76	3	76
W3H-810-2*-4	134 1/2	3416	110	2794	102 3/4	2609	122	3098	3	76	3	76
W3H-811-2*-4	146 1/2	3721	122	3099	114 3/4	2914	134	3403	3	76	3	76
W3H-812-2*-4	158 1/2	4026	134	3404	126 3/4	3219	146	3708	3	76	3	76
W3H-813-2*-4	170 1/2	4331	146	3709	138 3/4	3524	158	4013	3	76	3	76
W3H-814-2*-4	182 1/2	4636	158	4014	150 3/4	3829	170	4318	3	76	3	76

### NOZZLE SCHEDULE

SERVICE	MARK	SHELL SIDE	MARK	TUBE SIDE
INLET	N1	AS PER TABLE	N5	3 (76) 300# FLG.
OUTLET	N2	AS PER TABLE	N6	3 (76) 300# FLG.
DRAIN	N3	1/2 (13) NPT		
VENT	N4	3/4 (19) NPT		

- NOTES:
1. SUPPORTS SUPPLIED ONLY IF SPECIFIED ON ORDER.
  2. NOZZLE SIZES SHOWN ARE RECOMMENDED FOR MAX. EXCHANGER LIFE, NO EXTERNAL FORCES APPLY.
  3. FABRICATED TO ASME CODE SECTION VIII DIVISION 1 AND LATEST ADDENDA.
  4. DRAWING IS NOT TO SCALE.
  5. ALL DIM'S ±1/8 (3) UNLESS OTHERWISE SHOWN.

### DESIGN CONDITIONS

	SHELL		TUBES	
DESIGN PRESSURE	300 PSIG	2068 KPa	300 PSIG	2068 KPa
DESIGN TEMPERATURE	375 °F	191 °C	375 °F	191 °C
MIN. DESIGN METAL TEMP.	35 °F	1.7 °C	35 °F	1.7 °C
HYDRO. TEST PRESSURE	450 PSIG	3102 KPa	450 PSIG	3102 KPa
CONTENTS	WATER		WATER	

CUSTOMER:

LOCATION:

ENGINEER:

ORDER No.:

PROJECT/JOB:

LOCATION:

TAG:

(QUOTE # )

TITLE	A R M S T R O N G				NUMBER	REV.
G.A. 300 LB. W SERIES HEAT EXCHANGERS	TORONTO - CANADA	MONTREAL - CANADA	BUFFALO - N. Y.	DOLCHESTER - U.K.	W3H-8-2P-4(3)	
DATE: 01 / 30 / 01 BY: J.R.	TEL : (416) 755-2291	TEL : (514) 421-2424	TEL: (716) 693-8813	TEL: (44) 120-657-9491		