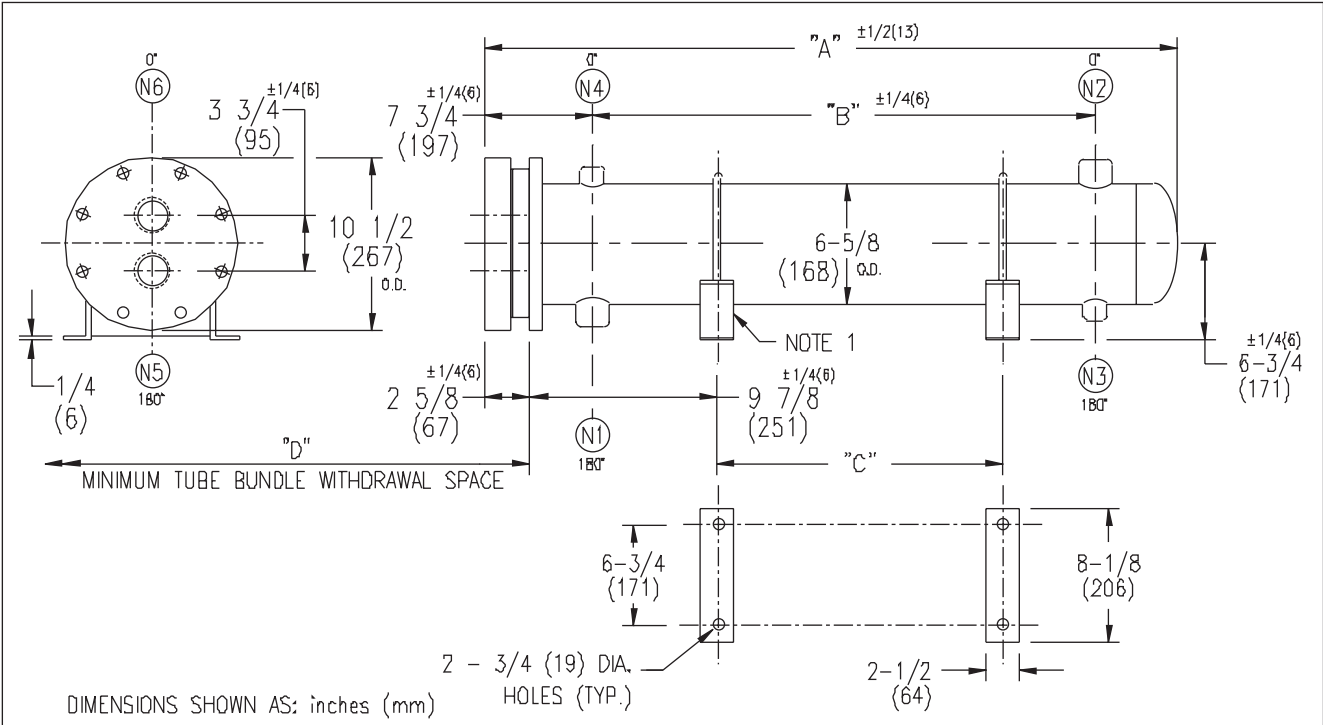


# ARMSTRONG®



EXCHANGER SIZE *BAFFLE SPACING	DIMENSIONS											
	A		B		C		D		N1		N2	
	inches	mm	inches	mm	inches	mm	inches	mm	inches	mm	inches	mm
W3H-62-2*-3	28 3/4	730	14 3/4	375	7 3/4	197	26	660	3	76	3	76
W3H-63-2*-3	40 3/4	1035	26 3/4	679	19 3/4	502	38	965	3	76	3	76
W3H-64-2*-3	52 3/4	1340	38 3/4	984	31 3/4	806	50	1270	3	76	3	76
W3H-65-2*-3	64 3/4	1644	50 3/4	1289	43 3/4	1111	62	1574	3	76	3	76
W3H-66-2*-3	76 3/4	1949	62 3/4	1594	55 3/4	1416	74	1879	3	76	3	76
W3H-67-2*-3	88 3/4	2254	74 3/4	1899	67 3/4	1721	86	2184	3	76	3	76
W3H-68-2*-3	100 3/4	2559	86 3/4	2203	79 3/4	2026	98	2489	3	76	3	76
W3H-69-2*-3	112 3/4	2864	98 3/4	2508	91 3/4	2330	110	2794	3	76	3	76
W3H-610-2*-3	124 3/4	3168	110 3/4	2813	103 3/4	2635	122	3098	3	76	3	76
W3H-611-2*-3	136 3/4	3473	122 3/4	3118	115 3/4	2940	134	3403	3	76	3	76
W3H-612-2*-3	148 3/4	3778	134 3/4	3423	127 3/4	3245	146	3708	3	76	3	76

NOZZLE SCHEDULE				
SERVICE	MARK	SHELL SIDE	MARK	TUBE SIDE
INLET	N1	AS PER TABLE	N5	2 (51) NPT
OUTLET	N2	AS PER TABLE	N6	2 (51) NPT
DRAIN	N3	1/2 (13) NPT		
VENT	N4	3/4 (19) NPT		

NOTES: 1. SUPPORTS SUPPLIED ONLY IF SPECIFIED ON ORDER.  
 2. NOZZLE SIZES SHOWN ARE RECOMMENDED FOR MAX. EXCHANGER LIFE, NO EXTERNAL FORCES APPLY.  
 3. FABRICATED TO ASME CODE SECTION VIII DIVISION 1 AND LATEST ADDENDA.  
 4. DRAWING IS NOT TO SCALE.  
 5. ALL DIM'S ±1/8 (3) UNLESS OTHERWISE SHOWN.

DESIGN CONDITIONS				
	SHELL		TUBES	
DESIGN PRESSURE	300 PSIG	2068 KPa	300 PSIG	2068 KPa
DESIGN TEMPERATURE	375 °F	191 °C	375 °F	191 °C
MIN. DESIGN METAL TEMP.	35 °F	1.7 °C	35 °F	1.7 °C
HYDRO. TEST PRESSURE	450 PSIG	3102 KPa	450 PSIG	3102 KPa
CONTENTS	WATER		WATER	

CUSTOMER: \_\_\_\_\_  
 LOCATION: \_\_\_\_\_  
 ENGINEER: \_\_\_\_\_  
 ORDER No.: \_\_\_\_\_  
 PROJECT/JOB: \_\_\_\_\_  
 LOCATION: \_\_\_\_\_  
 TAG: \_\_\_\_\_ (QUOTE # \_\_\_\_\_)

TITLE	G.A. 300 LB. W SERIES HEAT EXCHANGERS				A R M S T R O N G				NUMBER	W3H-6-2P-3(3)	REV.	
DATE:	11 / 24 / 00	BY:	J.R.	TORONTO - CANADA	MONTREAL - CANADA	BUFFALO - N. Y.	COLCHESTER - U.K.	TEL: (416) 755-2291	TEL: (514) 421-2424	TEL: (716) 693-8813	TEL: (44) 120-657-9491	