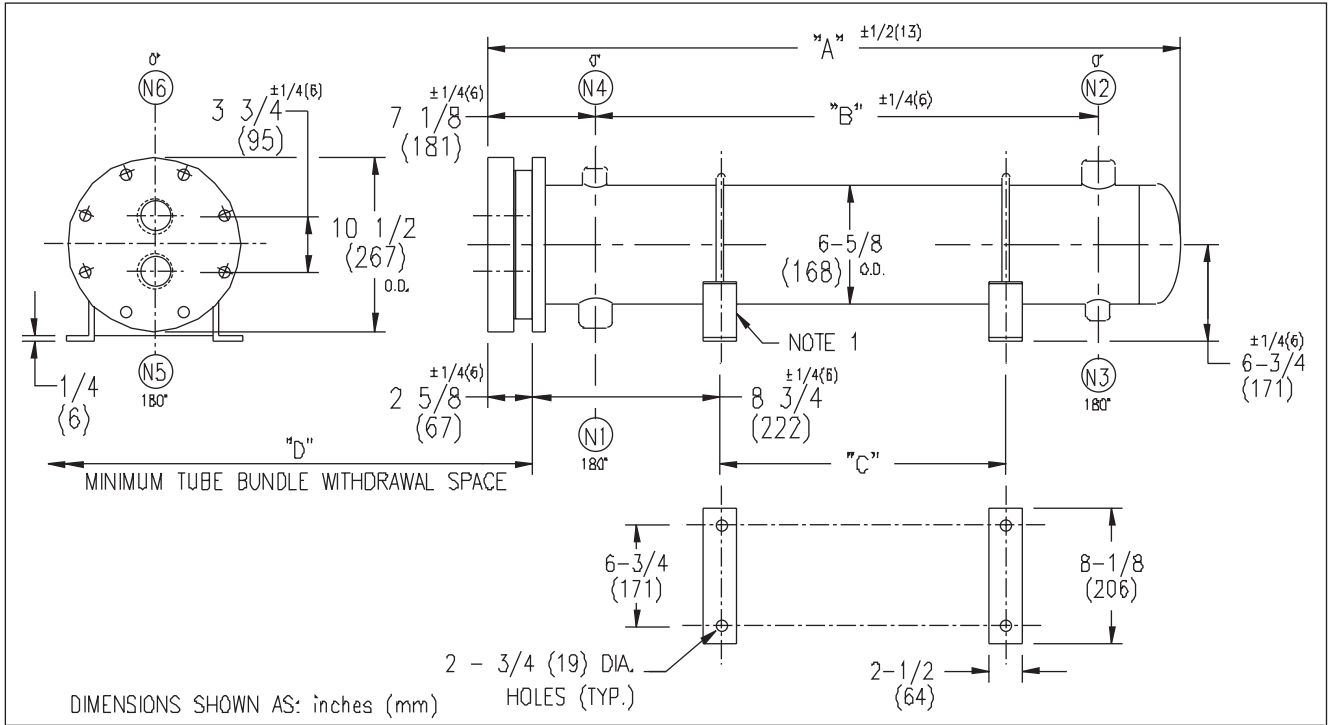


ARMSTRONG®



| EXCHANGER SIZE *-BAFFLE SPACING | DIMENSIONS | | | | | | | | | | | |
|------------------------------------|------------|------|--------|------|---------|------|--------|------|--------|----|--------|----|
| | A | | B | | C | | D | | N1 | | N2 | |
| | inches | mm | inches | mm | inches | mm | inches | mm | inches | mm | inches | mm |
| W3H-62-2*-3 | 28 3/4 | 730 | 16 | 406 | 9 1/4 | 235 | 26 | 660 | 2 | 51 | 2 | 51 |
| W3H-63-2*-3 | 40 3/4 | 1035 | 28 | 711 | 21 1/4 | 540 | 38 | 965 | 2 | 51 | 2 | 51 |
| W3H-64-2*-3 | 52 3/4 | 1340 | 40 | 1016 | 33 1/4 | 845 | 50 | 1270 | 2 | 51 | 2 | 51 |
| W3H-65-2*-3 | 64 3/4 | 1644 | 52 | 1320 | 45 1/4 | 1149 | 62 | 1574 | 2 | 51 | 2 | 51 |
| W3H-66-2*-3 | 76 3/4 | 1949 | 64 | 1625 | 57 1/4 | 1454 | 74 | 1879 | 2 | 51 | 2 | 51 |
| W3H-67-2*-3 | 88 3/4 | 2254 | 76 | 1930 | 69 1/4 | 1759 | 86 | 2184 | 2 | 51 | 2 | 51 |
| W3H-68-2*-3 | 100 3/4 | 2559 | 88 | 2235 | 81 1/4 | 2064 | 98 | 2489 | 2 | 51 | 2 | 51 |
| W3H-69-2*-3 | 112 3/4 | 2864 | 100 | 2540 | 93 1/4 | 2369 | 110 | 2794 | 2 | 51 | 2 | 51 |
| W3H-610-2*-3 | 124 3/4 | 3168 | 112 | 2844 | 105 1/4 | 2673 | 122 | 3098 | 2 | 51 | 2 | 51 |
| W3H-611-2*-3 | 136 3/4 | 3473 | 124 | 3149 | 117 1/4 | 2978 | 134 | 3403 | 2 | 51 | 2 | 51 |
| W3H-612-2*-3 | 148 3/4 | 3778 | 136 | 3454 | 129 1/4 | 3283 | 146 | 3708 | 2 | 51 | 2 | 51 |

| NOZZLE SCHEDULE | | | | |
|-----------------|------|--------------|------|------------|
| SERVICE | MARK | SHELL SIDE | MARK | TUBE SIDE |
| INLET | N1 | AS PER TABLE | N5 | 2 (51) NPT |
| OUTLET | N2 | AS PER TABLE | N6 | 2 (51) NPT |
| DRAIN | N3 | 1/2 (13) NPT | | |
| VENT | N4 | 3/4 (19) NPT | | |

NOTES: 1. SUPPORTS SUPPLIED ONLY IF SPECIFIED ON ORDER.
 2. NOZZLE SIZES SHOWN ARE RECOMMENDED FOR MAX. EXCHANGER LIFE, NO EXTERNAL FORCES APPLY.
 3. FABRICATED TO ASME CODE SECTION VIII DIVISION 1 AND LATEST ADDENDA.
 4. DRAWING IS NOT TO SCALE.
 5. ALL DIM'S ±1/8 (3) UNLESS OTHERWISE SHOWN.

| DESIGN CONDITIONS | | | | |
|-------------------------|----------|----------|----------|----------|
| | SHELL | | TUBES | |
| DESIGN PRESSURE | 300 PSIG | 2068 KPa | 300 PSIG | 2068 KPa |
| DESIGN TEMPERATURE | 375 °F | 191 °C | 375 °F | 191 °C |
| MIN. DESIGN METAL TEMP. | 35 °F | 1.7 °C | 35 °F | 1.7 °C |
| HYDRO. TEST PRESSURE | 450 PSIG | 3102 KPa | 450 PSIG | 3102 KPa |
| CONTENTS | WATER | | WATER | |

CUSTOMER:
 LOCATION:
 ENGINEER:
 ORDER No.:
 PROJECT/JOB:
 LOCATION:
 TAG: (QUOTE #)

| | | | | | | |
|---|---|--|--|---|-------------------------|------|
| TITLE G.A. 300 LB. W SERIES HEAT EXCHANGERS | A R M S T R O N G | | | | NUMBER W3H-6-2P-3(2) | REV. |
| DATE: 12 / 05 / 00 BY: J.R. | TORONTO - CANADA TEL: (416) 756-2291 | MONTREAL - CANADA TEL: (514) 421-2424 | BUFFALO - N. Y. TEL: (716) 693-8813 | COLCHESTER - U.K. TEL: (44) 120-657-9491 | | |