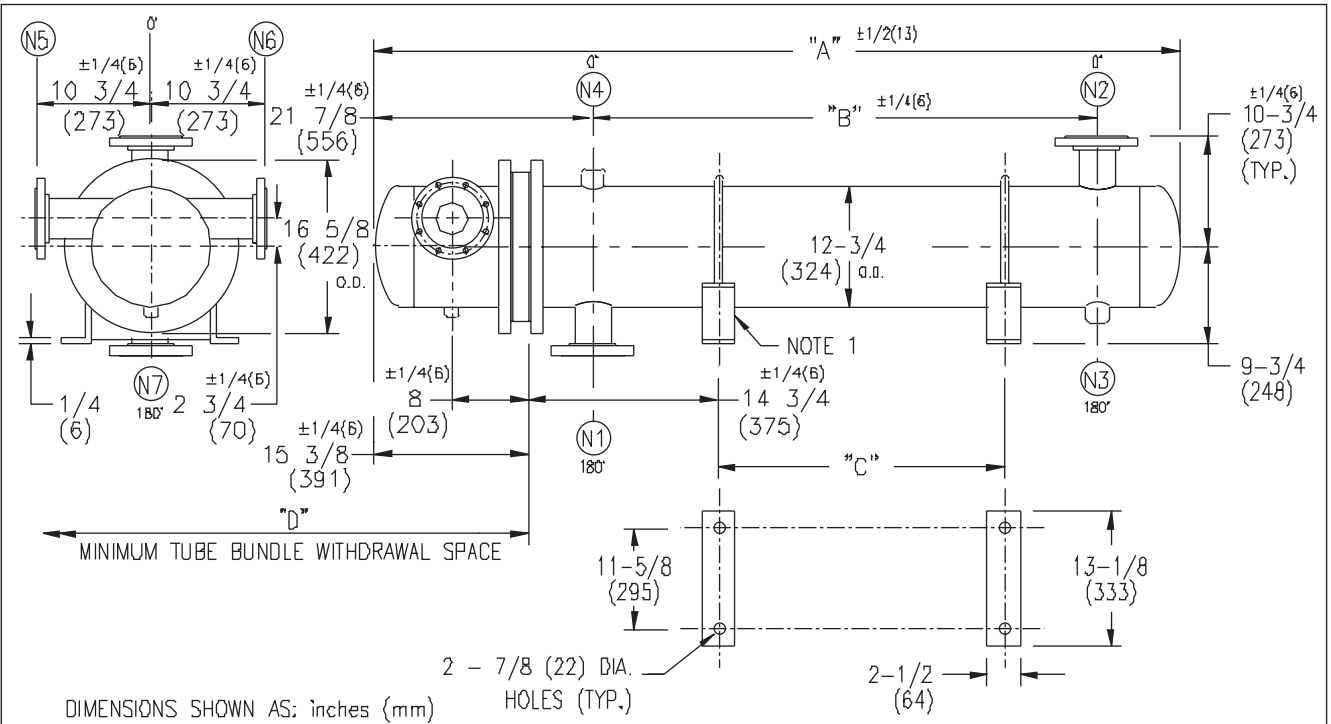


ARMSTRONG®



EXCHANGER SIZE *-BAFFLE SPACING	DIMENSIONS											
	A		B		C		D		N1		N2	
	inches	mm	inches	mm	inches	mm	inches	mm	inches	mm	inches	mm
W3H-123-4*-4	53 1/2	1359	24 1/2	622	13 3/4	349	38	965	4	102	4	102
W3H-124-4*-4	65 1/2	1664	36 1/2	927	25 3/4	654	50	1270	4	102	4	102
W3H-125-4*-4	77 1/2	1969	48 1/2	1232	37 3/4	959	62	1574	4	102	4	102
W3H-126-4*-4	89 1/2	2273	60 1/2	1537	49 3/4	1264	74	1879	4	102	4	102
W3H-127-4*-4	101 1/2	2578	72 1/2	1842	61 3/4	1568	86	2184	4	102	4	102
W3H-128-4*-4	113 1/2	2883	84 1/2	2146	73 3/4	1873	98	2489	4	102	4	102
W3H-129-4*-4	125 1/2	3188	96 1/2	2451	85 3/4	2178	110	2794	4	102	4	102
W3H-1210-4*-4	137 1/2	3493	108 1/2	2756	97 3/4	2483	122	3098	4	102	4	102
W3H-1211-4*-4	149 1/2	3797	120 1/2	3061	109 3/4	2788	134	3403	4	102	4	102
W3H-1212-4*-4	161 1/2	4102	132 1/2	3366	121 3/4	3092	146	3708	4	102	4	102
W3H-1213-4*-4	173 1/2	4407	144 1/2	3670	133 3/4	3397	158	4013	4	102	4	102
W3H-1214-4*-4	185 1/2	4712	156 1/2	3975	145 3/4	3702	170	4318	4	102	4	102
W3H-1215-4*-4	197 1/2	5017	168 1/2	4280	157 3/4	4007	182	4623	4	102	4	102

NOZZLE SCHEDULE				
SERVICE	MARK	SHELL SIDE	MARK	TUBE SIDE
INLET	N1	AS PER TABLE	N5	4 {102} 3DD# FLG.
OUTLET	N2	AS PER TABLE	N6	4 {102} 3DD# FLG.
DRAIN	N3	1/2 {13} NPT	N7	1/2 {13} NPT
VENT	N4	3/4 {19} NPT		

NOTES:

1. SUPPORTS SUPPLIED ONLY IF SPECIFIED ON ORDER.
2. NOZZLE SIZES SHOWN ARE RECOMMENDED FOR MAX. EXCHANGER LIFE, NO EXTERNAL FORCES APPLY.
3. FABRICATED TO ASME CODE SECTION VIII DIVISION 1 AND LATEST ADDENDA.
4. DRAWING IS NOT TO SCALE.
5. ALL DIM'S ±1/8 (3) UNLESS OTHERWISE SHOWN.

DESIGN CONDITIONS				
	SHELL		TUBES	
DESIGN PRESSURE	300 PSIG	2068 KPa	300 PSIG	2068 KPa
DESIGN TEMPERATURE	375 °F	191 °C	375 °F	191 °C
MIN. DESIGN METAL TEMP.	35 °F	1.7 °C	35 °F	1.7 °C
HYDRO. TEST PRESSURE	450 PSIG	3102 KPa	450 PSIG	3102 KPa
CONTENTS	WATER		WATER	

CUSTOMER: _____
 LOCATION: _____
 ENGINEER: _____
 ORDER No.: _____
 PROJECT/JOB: _____
 LOCATION: _____
 TAG: _____ (QUOTE # _____)

TITLE	G.A. 300 LB. W SERIES HEAT EXCHANGERS				A R M S T R O N G				NUMBER	W3H-12-4P-4(4)		REV.
DATE:	04 / 23 / 01	BY:	J.R.	TEL :	(416) 765-2291	TEL :	(514) 421-2424	TEL :	(716) 693-8813	TEL :	(44) 120-657-9491	