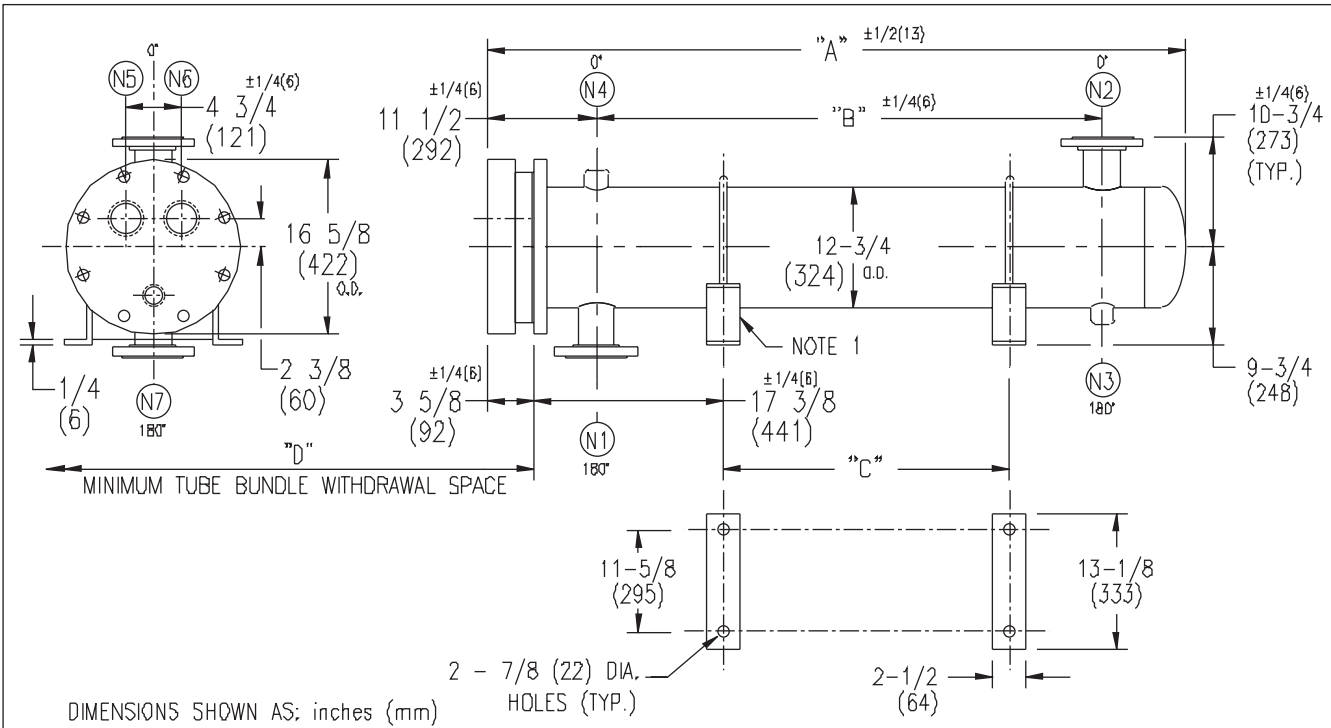


# ARMSTRONG®



DIMENSIONS SHOWN AS: inches (mm)

EXCHANGER SIZE *-BAFFLE SPACING	DIMENSIONS											
	A		B		C		D		N1		N2	
	inches	mm	inches	mm	inches	mm	inches	mm	inches	mm	inches	mm
W3H-123-4*-3	41 3/4	1060	22	559	10	254	38	965	6	152	6	152
W3H-124-4*-3	53 3/4	1365	34	864	22	559	50	1270	6	152	6	152
W3H-125-4*-3	65 3/4	1670	46	1168	34	864	62	1574	6	152	6	152
W3H-126-4*-3	77 3/4	1975	58	1473	46	1168	74	1879	6	152	6	152
W3H-127-4*-3	89 3/4	2280	70	1798	58	1473	86	2184	6	152	6	152
W3H-128-4*-3	101 3/4	2584	82	2083	70	1798	98	2489	6	152	6	152
W3H-129-4*-3	113 3/4	2889	94	2388	82	2083	110	2794	6	152	6	152
W3H-1210-4*-3	125 3/4	3194	106	2692	94	2388	122	3098	6	152	6	152
W3H-1211-4*-3	137 3/4	3499	118	2997	106	2692	134	3403	6	152	6	152
W3H-1212-4*-3	149 3/4	3804	130	3302	118	2997	146	3708	6	152	6	152
W3H-1213-4*-3	161 3/4	4108	142	3607	130	3302	158	4013	6	152	6	152
W3H-1214-4*-3	173 3/4	4413	154	3912	142	3607	170	4318	6	152	6	152
W3H-1215-4*-3	185 3/4	4718	166	4216	154	3912	182	4623	6	152	6	152

### NOZZLE SCHEDULE

SERVICE	MARK	SHELL SIDE	MARK	TUBE SIDE
INLET	N1	AS PER TABLE	N5	3 (76) NPT
OUTLET	N2	AS PER TABLE	N6	3 (76) NPT
DRAIN	N3	1/2 (13) NPT	N7	1/2 (13) NPT
VENT	N4	3/4 (19) NPT		

- NOTES: 1. SUPPORTS SUPPLIED ONLY IF SPECIFIED ON ORDER.  
 2. NOZZLE SIZES SHOWN ARE RECOMMENDED FOR MAX. EXCHANGER LIFE, NO EXTERNAL FORCES APPLY.  
 3. FABRICATED TO ASME CODE SECTION VIII DIVISION 1 AND LATEST ADDENDA.  
 4. DRAWING IS NOT TO SCALE.  
 5. ALL DIMN'S  $\pm 1/8$  (3) UNLESS OTHERWISE SHOWN.

### DESIGN CONDITIONS

	SHELL		TUBES	
DESIGN PRESSURE	300 PSIG	2068 KPa	300 PSIG	2068 KPa
DESIGN TEMPERATURE	375 °F	191 °C	375 °F	191 °C
MIN. DESIGN METAL TEMP.	35 °F	1.7 °C	35 °F	1.7 °C
HYDRO. TEST PRESSURE	450 PSIG	3102 KPa	450 PSIG	3102 KPa
CONTENTS	WATER		WATER	

CUSTOMER:  
LOCATION:

ENGINEER:  
ORDER No.:  
PROJECT/JOB:  
LOCATION:

TAG: (QUOTE # )

TITLE G.A. 300 LB. W SERIES  
HEAT EXCHANGERS

ARMSTRONG

NUMBER

REV.

DATE: 04 / 20 / 01 BY: J.R.

TORONTO - CANADA MONTREAL - CANADA BUFFALO - N. Y. COLCHESTER - U.K.  
TEL : (416) 755-2291 TEL : (514) 421-2424 TEL: (716) 693-8813 TEL: (44) 120-657-9491

W3H-12-4P-3(6)