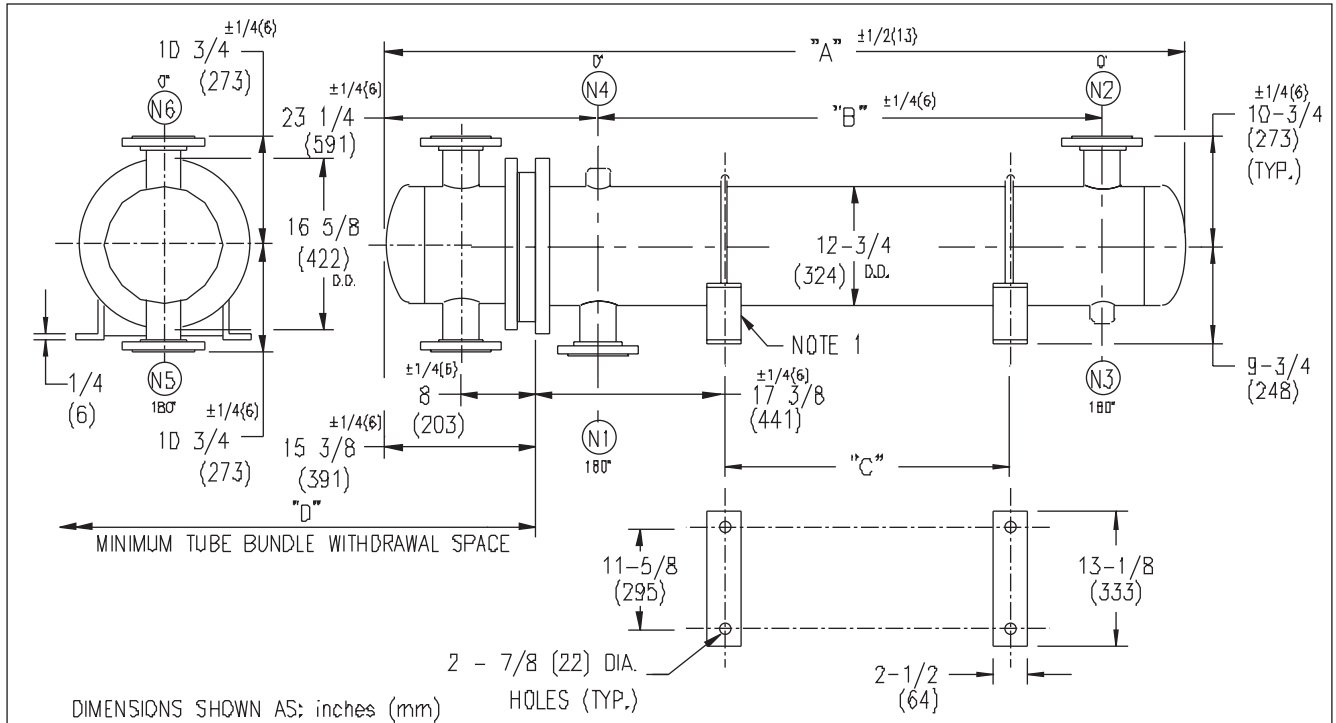


ARMSTRONG®



DIMENSIONS SHOWN AS: inches (mm)

HOLES (TYP.)

EXCHANGER SIZE * - BAFFLE SPACING	DIMENSIONS											
	A		B		C		D		N1		N2	
	inches	mm	inches	mm	inches	mm	inches	mm	inches	mm	inches	mm
W3H-123-2*-4	53 1/2	1359	22	559	10	254	38	965	6	152	6	152
W3H-124-2*-4	65 1/2	1664	34	864	22	559	50	1270	6	152	6	152
W3H-125-2*-4	77 1/2	1969	46	1168	34	864	62	1574	6	152	6	152
W3H-126-2*-4	89 1/2	2273	58	1473	46	1168	74	1879	6	152	6	152
W3H-127-2*-4	101 1/2	2578	70	1778	58	1473	86	2184	6	152	6	152
W3H-128-2*-4	113 1/2	2883	82	2083	70	1778	98	2489	6	152	6	152
W3H-129-2*-4	125 1/2	3188	94	2388	82	2083	110	2794	6	152	6	152
W3H-1210-2*-4	137 1/2	3493	106	2692	94	2388	122	3098	6	152	6	152
W3H-1211-2*-4	149 1/2	3797	118	2997	106	2692	134	3403	6	152	6	152
W3H-1212-2*-4	161 1/2	4102	130	3302	118	2997	146	3708	6	152	6	152
W3H-1213-2*-4	173 1/2	4407	142	3607	130	3302	158	4013	6	152	6	152
W3H-1214-2*-4	185 1/2	4712	154	3912	142	3607	170	4318	6	152	6	152
W3H-1215-2*-4	197 1/2	5017	166	4216	154	3912	182	4623	6	152	6	152

NOZZLE SCHEDULE

SERVICE	MARK	SHELL SIDE	MARK	TUBE SIDE
INLET	(N1)	AS PER TABLE	(N5)	4 (102) 300# (RFSD) FLG.
OUTLET	(N2)	AS PER TABLE	(N6)	4 (102) 300# (RFSD) FLG.
DRAIN	(N3)	1/2 (13) NPT		
VENT	(N4)	3/4 (19) NPT		

- NOTES:
1. SUPPORTS SUPPLIED ONLY IF SPECIFIED ON ORDER.
 2. NOZZLE SIZES SHOWN ARE RECOMMENDED FOR MAX. EXCHANGER LIFE, NO EXTERNAL FORCES APPLY.
 3. FABRICATED TO ASME CODE SECTION VIII DIVISION 1 AND LATEST ADDENDA.
 4. DRAWING IS NOT TO SCALE.
 5. ALL DIM'S ±1/8 (3) UNLESS OTHERWISE SHOWN.

DESIGN CONDITIONS

	SHELL		TUBES	
DESIGN PRESSURE	300 PSIG	2068 KPa	300 PSIG	2068 KPa
DESIGN TEMPERATURE	375 °F	191 °C	375 °F	191 °C
MIN. DESIGN METAL TEMP.	35 °F	1.7 °C	35 °F	1.7 °C
HYDRO. TEST PRESSURE	450 PSIG	3102 KPa	450 PSIG	3102 KPa
CONTENTS	WATER		WATER	

CUSTOMER:
LOCATION:

ENGINEER:

ORDER No.:

PROJECT/JOB:

LOCATION:

TAG:

(QUOTE #)

TITLE	A R M S T R O N G				NUMBER	REV.
G.A. 300 LB. W SERIES HEAT EXCHANGERS	TORONTO - CANADA	MONTREAL - CANADA	BUFFALO - N. Y.	COLCHESTER - U.K.	W3H-12-2P-4(6)	
DATE: 04 / 23 / 01 BY: J.R.	TEL : (416) 755-2291	TEL : (514) 421-2424	TEL : (716) 693-8813	TEL : (44) 120-657-9491		