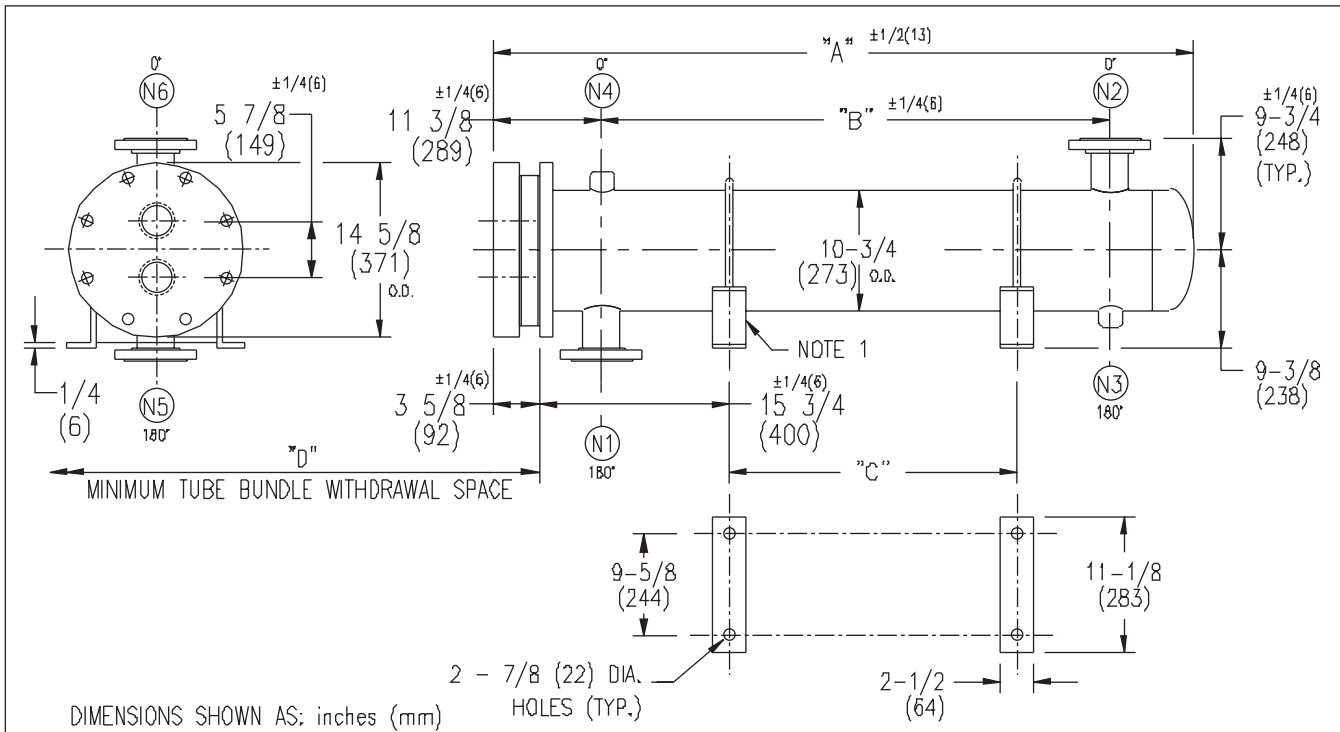


ARMSTRONG®



EXCHANGER SIZE *-BAFFLE SPACING	DIMENSIONS											
	A		B		C		D		N1		N2	
	inches	mm	inches	mm	inches	mm	inches	mm	inches	mm	inches	mm
W3H-102-2*-3	30 1/4	768	10 3/4	273	-	-	26	660	6	152	6	152
W3H-103-2*-3	42 1/4	1073	22 3/4	578	11 1/2	292	38	965	6	152	6	152
W3H-104-2*-3	54 1/4	1378	34 3/4	883	23 1/2	597	50	1270	6	152	6	152
W3H-105-2*-3	66 1/4	1682	46 3/4	1187	35 1/2	902	62	1574	6	152	6	152
W3H-106-2*-3	78 1/4	1987	58 3/4	1492	47 1/2	1207	74	1879	6	152	6	152
W3H-107-2*-3	90 1/4	2292	70 3/4	1797	59 1/2	1511	86	2184	6	152	6	152
W3H-108-2*-3	102 1/4	2597	82 3/4	2102	71 1/2	1816	98	2489	6	152	6	152
W3H-109-2*-3	114 1/4	2902	94 3/4	2407	83 1/2	2121	110	2794	6	152	6	152
W3H-1010-2*-3	126 1/4	3206	106 3/4	2711	95 1/2	2426	122	3098	6	152	6	152
W3H-1011-2*-3	138 1/4	3511	118 3/4	3016	107 1/2	2731	134	3403	6	152	6	152
W3H-1012-2*-3	150 1/4	3816	130 3/4	3321	119 1/2	3035	146	3708	6	152	6	152
W3H-1013-2*-3	162 1/4	4121	142 3/4	3626	131 1/2	3340	158	4013	6	152	6	152
W3H-1014-2*-3	174 1/4	4426	154 3/4	3931	143 1/2	3645	170	4318	6	152	6	152
W3H-1015-2*-3	186 1/4	4730	166 3/4	4235	155 1/2	3949	182	4623	6	152	6	152

NOZZLE SCHEDULE				
SERVICE	MARK	SHELL SIDE	MARK	TUBE SIDE
INLET	N1	AS PER TABLE	N5	3 (76) NPT
OUTLET	N2	AS PER TABLE	N6	3 (76) NPT
DRAIN	N3	1/2 (13) NPT		
VENT	N4	3/4 (19) NPT		

NOTES: 1. SUPPORTS SUPPLIED ONLY IF SPECIFIED ON ORDER.
 2. NOZZLE SIZES SHOWN ARE RECOMMENDED FOR MAX. EXCHANGER LIFE, NO EXTERNAL FORCES APPLY.
 3. FABRICATED TO ASME CODE SECTION VIII DIVISION 1 AND LATEST ADDENDA.
 4. DRAWING IS NOT TO SCALE.
 5. ALL DIM'S ±1/8 (3) UNLESS OTHERWISE SHOWN.

DESIGN CONDITIONS				
	SHELL		TUBES	
DESIGN PRESSURE	300 PSIG	2068 KPa	300 PSIG	2068 KPa
DESIGN TEMPERATURE	375 °F	191 °C	375 °F	191 °C
MIN. DESIGN METAL TEMP.	35 °F	1.7 °C	35 °F	1.7 °C
HYDRO. TEST PRESSURE	450 PSIG	3102 KPa	450 PSIG	3102 KPa
CONTENTS	WATER		WATER	

CUSTOMER: _____
 LOCATION: _____
 ENGINEER: _____
 ORDER No.: _____
 PROJECT/JOB: _____
 LOCATION: _____
 TAC: _____ (QUOTE # _____)

TITLE	A R M S T R O N G				NUMBER	REV.
G.A. 300 LB. W SERIES HEAT EXCHANGERS	TORONTO - CANADA TEL : (416) 755-2281	MONTREAL - CANADA TEL : (514) 421-2424	BUFFALO - N. Y. TEL : (716) 693-8813	COLCHESTER - U.K. TEL : (44) 120-657-9491	W3H-10-2P-3(6)	
DATE: 03 / DB / 01	BY: J.R.					