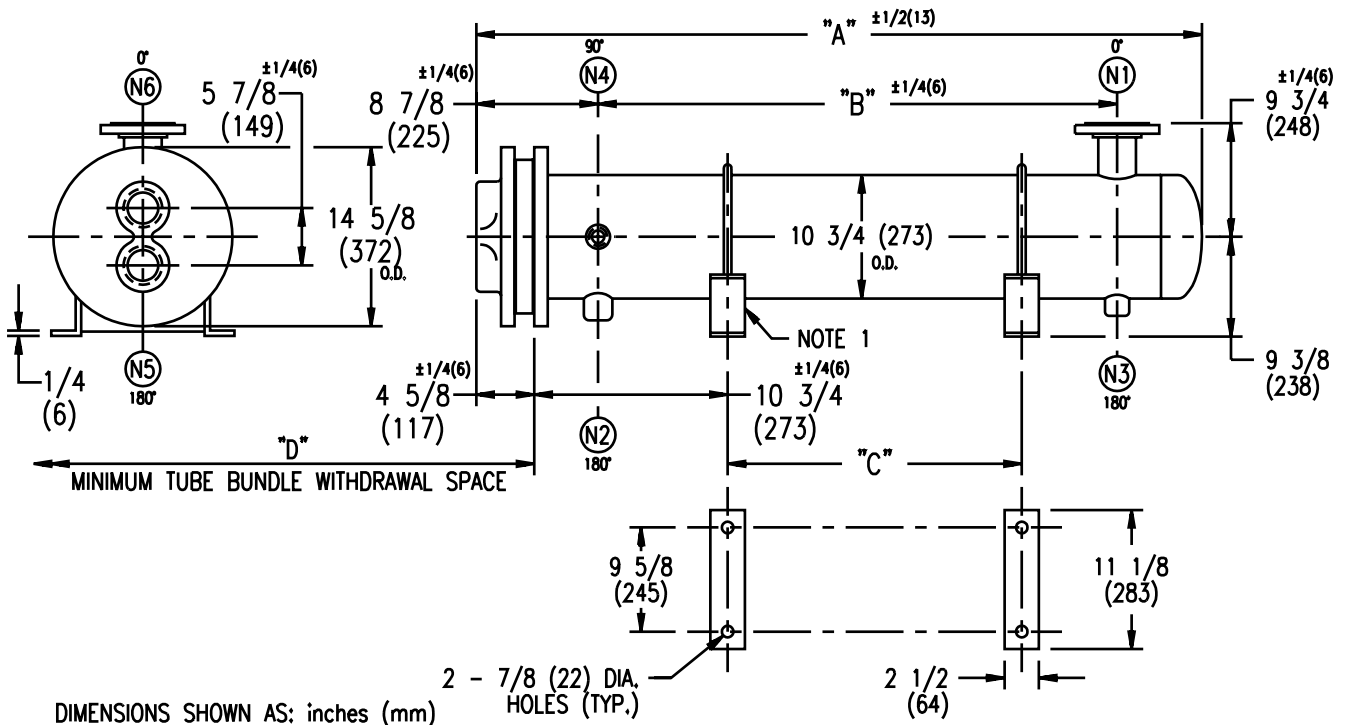


ARMSTRONG®



DIMENSIONS SHOWN AS: inches (mm)

EXCHANGER SIZE	DIMENSIONS											
	A		B		C		D		N1		N2	
	inches	mm	inches	mm	inches	mm	inches	mm	inches	mm	inches	mm
WS-102-2E1	41 3/4	1060	24 1/2	622	15 1/4	387	26	660	4	102	1 1/2	38
WS-103-2E1	53 3/4	1365	36 1/2	927	27 1/4	692	38	965	4	102	1 1/2	38
WS-104-2E1	65 3/4	1670	48 1/2	1232	39 1/4	997	50	1270	6	152	2	51
WS-105-2E1	77 3/4	1975	60 1/2	1537	51 1/4	1302	62	1575	6	152	2	51
WS-106-2E1	89 3/4	2280	72 1/2	1842	63 1/4	1607	74	1880	6	152	2	51
WS-107-2E1	101 3/4	2584	84 1/2	2146	75 1/4	1911	86	2184	6	152	2	51
WS-108-2E1	113 3/4	2889	96 1/2	2451	87 1/4	2216	98	2489	6	152	2	51
WS-109-2E1	125 3/4	3194	108 1/2	2756	99 1/4	2521	110	2794	6	152	2	51
WS-1010-2E1	137 3/4	3499	120 1/2	3061	111 1/4	2826	122	3099	6	152	2	51
WS-1011-2E1	149 3/4	3804	132 1/2	3366	123 1/4	3131	134	3404	6	152	2	51
WS-1012-2E1	161 3/4	4108	144 1/2	3670	135 1/4	3435	146	3708	6	152	2	51
WS-1013-2E1	173 3/4	4413	156 1/2	3975	147 1/4	3740	158	4013	6	152	2	51
WS-1014-2E1	185 3/4	4718	168 1/2	4280	159 1/4	4045	170	4318	6	152	2	51
WS-1015-2E1	197 3/4	5023	180 1/2	4585	171 1/4	4350	182	4623	6	152	2	51

NOZZLE SCHEDULE

SERVICE	MARK	SHELL SIDE	MARK	TUBE SIDE
INLET	(N1)	AS PER TABLE	(N5)	4 (102) NPT
OUTLET	(N2)	AS PER TABLE	(N6)	4 (102) NPT
DRAIN	(N3)	1/2 (13) NPT		
VENT	(N4)	3/4 (19) NPT		

- NOTES:
1. SUPPORTS SUPPLIED ONLY IF SPECIFIED ON ORDER.
 2. NOZZLE SIZES SHOWN ARE RECOMMENDED FOR MAXIMUM EXCHANGER LIFE.
 3. FABRICATED TO ASME CODE SECTION VIII DIVISION 1 AND LATEST ADDENDA.
 4. DRAWING IS NOT TO SCALE.
 5. ALL DIMN'S $\pm 1/8$ (3) UNLESS OTHERWISE SHOWN.

DESIGN CONDITIONS

	SHELL		TUBES	
DESIGN PRESSURE	150 PSIG	1034 KPa	125 PSIG	1034 KPa
DESIGN TEMPERATURE	375 °F	191 °C	375 °F	191 °C
MIN. DESIGN METAL TEMP.	35 °F	1.7 °C	35 °F	1.7 °C
HYDRO. TEST PRESSURE	225 PSIG	1551 KPa	250 PSIG	2068 KPa
CONTENTS	STEAM		WATER	

CUSTOMER:
 LOCATION:
 ENGINEER:
 ORDER No.:
 PROJECT/JOB:
 LOCATION:
 TAG: (QUOTE #)

TITLE	A R M S T R O N G				NUMBER	REV.
G.A. 150 LB. WS SERIES HEAT EXCHANGERS	TORONTO - CANADA	MONTREAL - CANADA	BUFFALO - N. Y.	COLCHESTER - U.K.	WS-10-2P-E1	
DATE: 12/01/94 BY: D.C.R.	TEL: (416) 755-2291	TEL: (514) 421-2424	TEL: (716) 693-8813	TEL: (44) 120-657-9491		