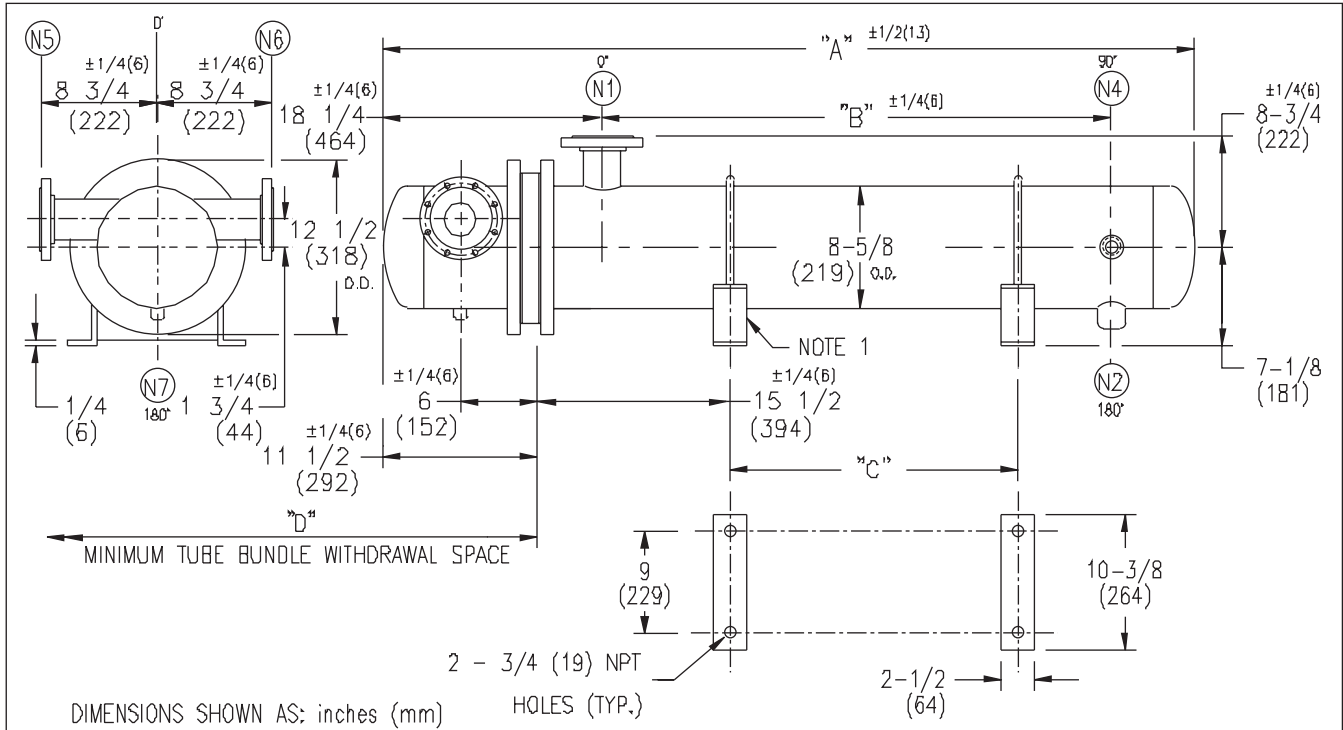


# ARMSTRONG®



EXCHANGER SIZE *BAFFLE SPACING	DIMENSIONS											
	A		B		C		D		N1		N2	
	inches	mm	inches	mm	inches	mm	inches	mm	inches	mm	inches	mm
WS3T-85-4*-4	72 3/4	1848	49	1245	37 3/8	949	62	1574	4	102	1	25
WS3T-86-4*-4	84 3/4	2153	61	1549	49 3/8	1254	74	1880	4	102	1-1/4	32
WS3T-87-4*-4	96 3/4	2457	73	1854	61 3/8	1559	86	2184	4	102	1-1/4	32
WS3T-88-4*-4	108 3/4	2762	85	2159	73 3/8	1864	98	2489	4	102	1-1/4	32
WS3T-89-4*-4	120 3/4	3067	97	2464	85 3/8	2169	110	2794	4	102	1-1/4	32
WS3T-810-4*-4	132 3/4	3372	109	2769	97 3/8	2473	122	3099	4	102	1-1/4	32
WS3T-811-4*-4	144 3/4	3677	121	3073	109 3/8	2778	134	3404	4	102	1-1/4	32
WS3T-812-4*-4	156 3/4	3981	133	3378	121 3/8	3083	146	3708	4	102	1-1/4	32
WS3T-813-4*-4	168 3/4	4286	145	3683	133 3/8	3388	158	4013	4	102	1-1/4	32
WS3T-814-4*-4	180 3/4	4591	157	3988	145 3/8	3693	170	4318	4	102	1-1/4	32

NOZZLE SCHEDULE				
SERVICE	MARK	SHELL SIDE	MARK	TUBE SIDE
INLET	N1	AS PER TABLE	N5	2 (51) 300# FLG.
OUTLET	N2	AS PER TABLE	N6	2 (51) 300# FLG.
DRAIN			N7	1/2 (13) NPT
VENT	N4	3/4 (19) NPT		

- NOTES:
1. SUPPORTS SUPPLIED ONLY IF SPECIFIED ON ORDER.
  2. NOZZLE SIZES SHOWN ARE RECOMMENDED FOR MAX. EXCHANGER LIFE, NO EXTERNAL FORCES APPLY.
  3. FABRICATED TO ASME CODE SECTION VIII DIVISION 1 AND LATEST ADDENDA.
  4. DRAWING IS NOT TO SCALE.
  5. ALL DIMN'S ±1/8 (3) UNLESS OTHERWISE SHOWN.

DESIGN CONDITIONS				
	SHELL		TUBES	
DESIGN PRESSURE	150 PSIG	1034 KPa	300 PSIG	2068 KPa
DESIGN TEMPERATURE	375 °F	191 °C	375 °F	191 °C
MIN. DESIGN METAL TEMP.	35 °F	1.7 °C	35 °F	1.7 °C
HYDRO. TEST PRESSURE	225 PSIG	1551 KPa	450 PSIG	3102 KPa
CONTENTS	STEAM		WATER	

CUSTOMER: \_\_\_\_\_  
 LOCATION: \_\_\_\_\_  
 ENGINEER: \_\_\_\_\_  
 ORDER No.: \_\_\_\_\_  
 PROJECT/JOB: \_\_\_\_\_  
 LOCATION: \_\_\_\_\_  
 TAG: \_\_\_\_\_ (QUOTE # \_\_\_\_\_)

TITLE G.A. 300 LB. WS SERIES HEAT EXCHANGERS	A R M S T R O N G				NUMBER WS3T-8-4P-4(6)	REV.
DATE: 01 / 12 / 01 BY: J.R.	TORONTO - CANADA TEL : (416) 755-2281	MONTREAL - CANADA TEL : (514) 421-2424	BUFFALO - N. Y. TEL: (716) 693-8813	DOLCHESTER - U.K. TEL: (44) 120-657-9491		