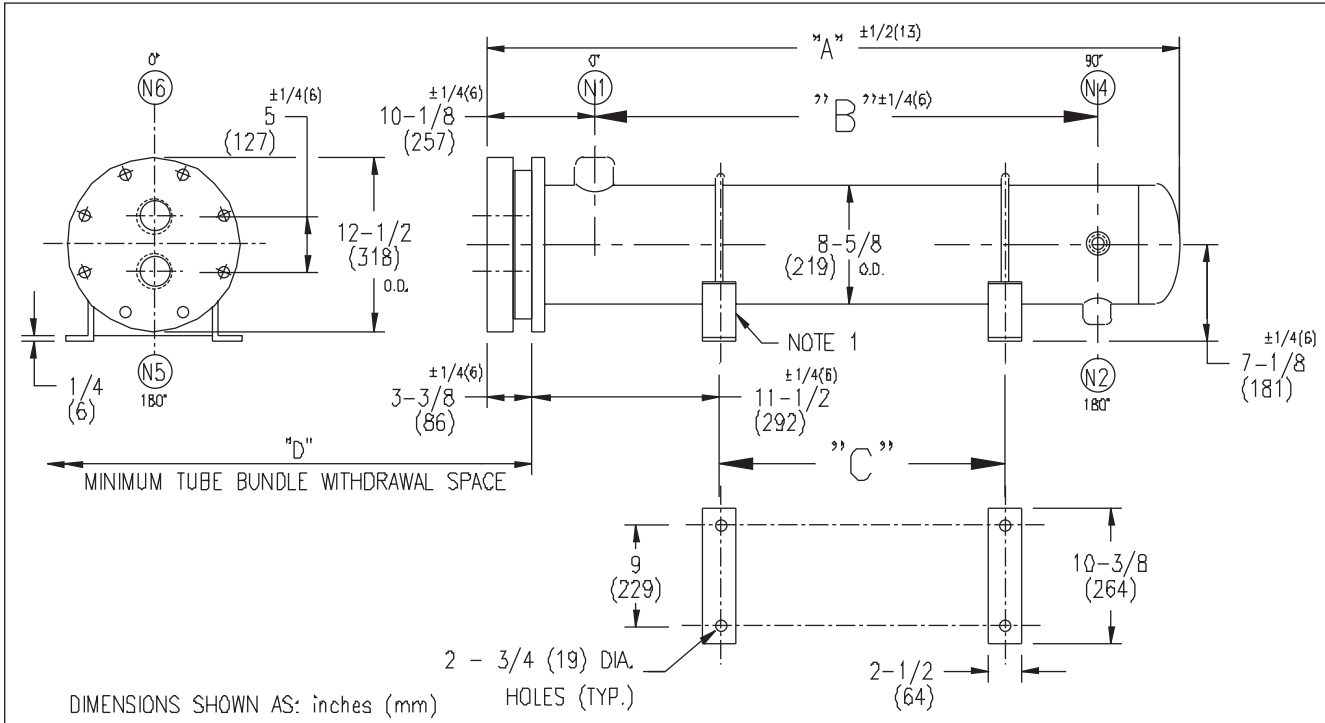


ARMSTRONG®



EXCHANGER SIZE *-BAFFLE SPACING	DIMENSIONS											
	A		B		C		D		N1		N2	
	inches	mm	inches	mm	inches	mm	inches	mm	inches	mm	inches	mm
WS3T-82-2*-3	28 5/8	727	13	330	5 1/2	140	26	660	2	51	1	25
WS3T-83-2*-3	40 5/8	1032	25	635	17 1/2	445	38	965	2-1/2	64	1	25
WS3T-84-2*-3	52 5/8	1337	37	940	29 1/2	749	50	1270	3	76	1	25

NOZZLE SCHEDULE					NOTES: 1. SUPPORTS SUPPLIED ONLY IF SPECIFIED ON ORDER. 2. NOZZLE SIZES SHOWN ARE RECOMMENDED FOR MAX. EXCHANGER LIFE, NO EXTERNAL FORCES TO APPLY. 3. FABRICATED TO ASME CODE SECTION VIII DIVISION 1 AND LATEST ADDENDA. 4. DRAWING IS NOT TO SCALE. 5. ALL DIMN'S ±1/8 (3) UNLESS OTHERWISE SHOWN.
SERVICE	MARK	SHELL SIDE	MARK	TUBE SIDE	
INLET	N1	AS PER TABLE	N5	3 (76) NPT	
OUTLET	N2	AS PER TABLE	N6	3 (76) NPT	
VENT	N4	3/4 (19) NPT			

DESIGN CONDITIONS				
	SHELL		TUBES	
DESIGN PRESSURE	150 PSIG	1034 KPa	300 PSIG	2068 KPa
DESIGN TEMPERATURE	375 °F	191 °C	375 °F	191 °C
MIN. DESIGN METAL TEMP.	35 °F	1.7 °C	35 °F	1.7 °C
HYDRO. TEST PRESSURE	225 PSIG	1551 KPa	450 PSIG	3102 KPa
CONTENTS	STEAM		WATER	

CUSTOMER:	
LOCATION:	
ENGINEER:	
ORDER No.:	
PROJECT/JOB:	
LOCATION:	
TAG:	(QUOTE #)

TITLE	A R M S T R O N G				NUMBER	REV.
G.A. 300 LB. WS SERIES HEAT EXCHANGERS	TORONTO - CANADA	MONTREAL - CANADA	BUFFALO - N. Y.	COLCHESTER - U.K.	WS3T-8-2P-3(3)	
DATE: 01 / 08 / 01 BY: J.R.	TEL : (416) 755-2291	TEL : (514) 421-2424	TEL: (716) 693-8813	TEL: (44) 120-657-9491		