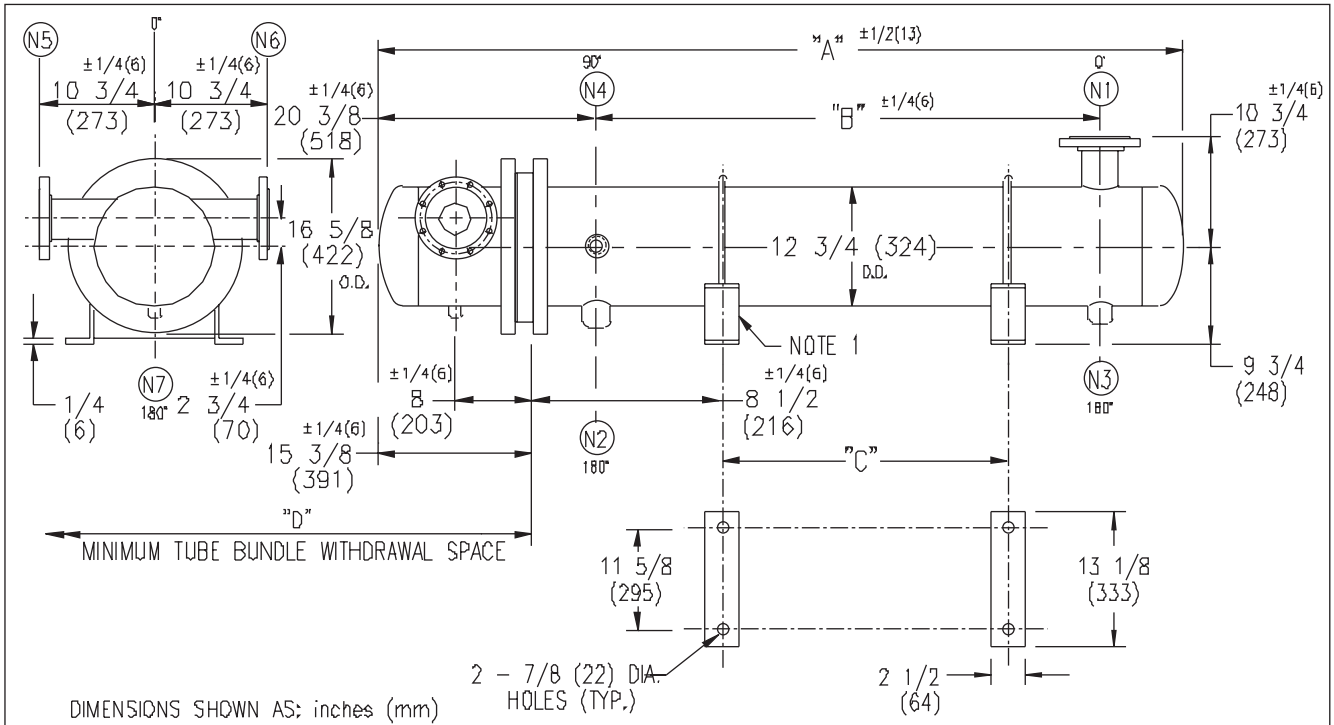


ARMSTRONG®



DIMENSIONS SHOWN AS: inches (mm)

EXCHANGER SIZE *-BAFFLE SPACING	DIMENSIONS											
	A		B		C		D		N1		N2	
	inches	mm	inches	mm	inches	mm	inches	mm	inches	mm	inches	mm
WS3T-123-4*-E4	66 3/8	1686	36 3/4	933	23 1/2	597	38	965	6	152	2	51
WS3T-124-4*-E4	78 3/8	1991	48 3/4	1238	35 1/2	902	50	1270	6	152	2	51
WS3T-125-4*-E4	90 3/8	2296	60 3/4	1543	47 1/2	1207	62	1574	6	152	2	51
WS3T-126-4*-E4	102 3/8	2600	72 3/4	1848	59 1/2	1511	74	1879	6	152	2	51
WS3T-127-4*-E4	114 3/8	2905	84 3/4	2153	71 1/2	1816	86	2184	8	203	2 1/2	64
WS3T-128-4*-E4	126 3/8	3210	96 3/4	2457	83 1/2	2121	98	2489	8	203	2 1/2	64
WS3T-129-4*-E4	138 3/8	3515	108 3/4	2762	95 1/2	2426	110	2794	8	203	2 1/2	64
WS3T-1210-4*-E4	150 3/8	3820	120 3/4	3067	107 1/2	2731	122	3098	8	203	2 1/2	64
WS3T-1211-4*-E4	162 3/8	4124	132 3/4	3372	119 1/2	3035	134	3403	8	203	2 1/2	64
WS3T-1212-4*-E4	174 3/8	4429	144 3/4	3677	131 1/2	3340	146	3708	8	203	2 1/2	64
WS3T-1213-4*-E4	186 3/8	4734	156 3/4	3981	143 1/2	3645	158	4013	8	203	2 1/2	64
WS3T-1214-4*-E4	198 3/8	5039	168 3/4	4286	155 1/2	3950	170	4318	8	203	2 1/2	64
WS3T-1215-4*-E4	210 3/8	5344	180 3/4	4591	167 1/2	4255	182	4623	8	203	2 1/2	64

NOZZLE SCHEDULE				
SERVICE	MARK	SHELL SIDE	MARK	TUBE SIDE
INLET	N1	AS PER TABLE	N5	4 (102) 300# (RFSD) FLG.
OUTLET	N2	AS PER TABLE	N6	4 (102) 300# (RFSD) FLG.
DRAIN	N3	1/2 (13) NPT	N7	1/2 (13) NPT
VENT	N4	3/4 (19) NPT		

NOTES: 1. SUPPORTS SUPPLIED ONLY IF SPECIFIED ON ORDER.
 2. NOZZLE SIZES SHOWN ARE RECOMMENDED FOR MAX. EXCHANGER LIFE, NO EXTERNAL FORCES APPLY.
 3. FABRICATED TO ASME CODE SECTION VIII DIVISION 1 AND LATEST ADDENDA.
 4. DRAWING IS NOT TO SCALE.
 5. ALL DIMN'S ±1/8 (3) UNLESS OTHERWISE SHOWN.

DESIGN CONDITIONS				
	SHELL		TUBES	
DESIGN PRESSURE	150 PSIG	1034 KPa	300 PSIG	2068 KPa
DESIGN TEMPERATURE	375 °F	191 °C	375 °F	191 °C
MIN. DESIGN METAL TEMP.	35 °F	1.7 °C	35 °F	1.7 °C
HYDRO. TEST PRESSURE	225 PSIG	1551 KPa	450 PSIG	3102 KPa
CONTENTS	STEAM		WATER	

CUSTOMER:
 LOCATION:
 ENGINEER:
 ORDER No.:
 PROJECT/JOB:
 LOCATION:
 TAG: (QUOTE #)

TITLE G.A. 300 LB. WS SERIES HEAT EXCHANGERS	A R M S T R O N G				NUMBER WS3T-12-4P-E4	REV.
DATE: 04 / 06 / 01 BY: J.R.	TORONTO - CANADA TEL: (416) 755-2281	MONTREAL - CANADA TEL: (514) 421-2424	BUFFALO - N. Y. TEL: (716) 693-8813	COLDHESTER - U.K. TEL: (44) 120-657-9491		