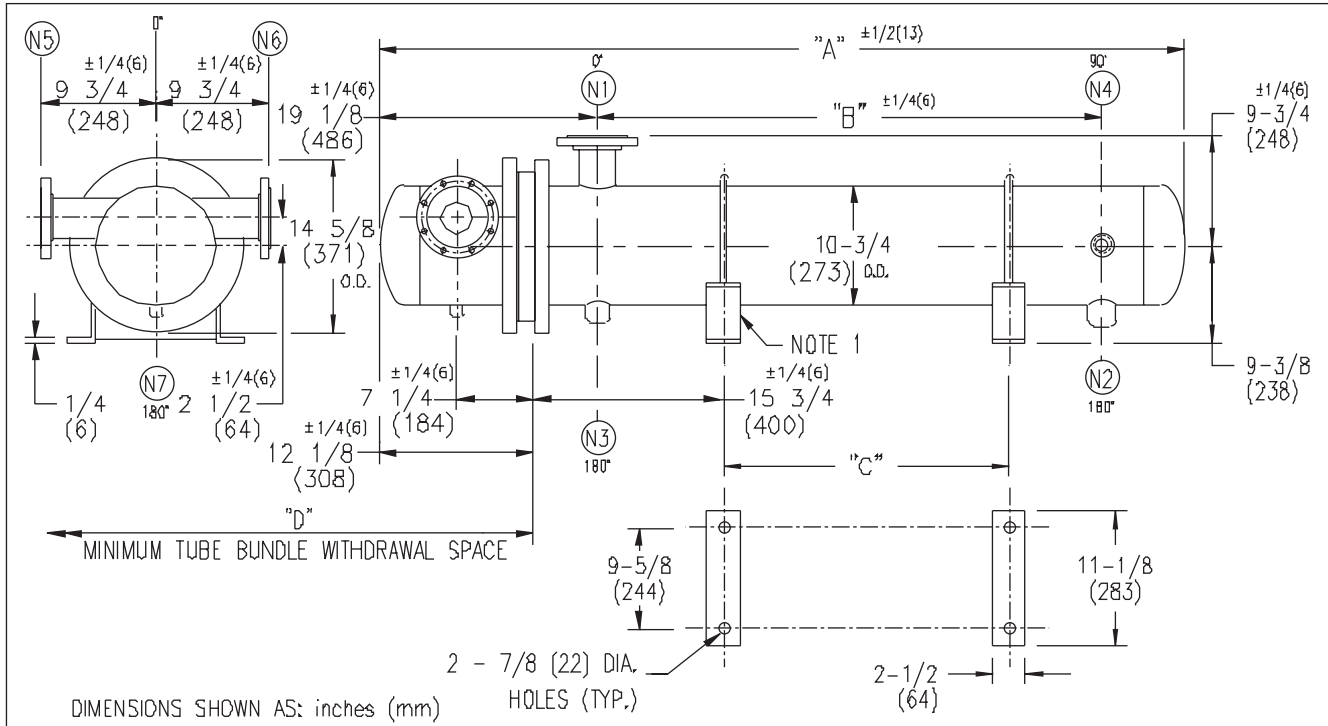


ARMSTRONG®



DIMENSIONS SHOWN AS: inches (mm)

HOLES (TYP.)

2-1/2 (64)

EXCHANGER SIZE *- BAFFLE SPACING	DIMENSIONS											
	A		B		C		D		N1		N2	
	inches	mm	inches	mm	inches	mm	inches	mm	inches	mm	inches	mm
WS3T-102-4*-4	37 3/8	949	12 1/4	311	-	-	26	660	4	102	1 1/2	38
WS3T-103-4*-4	49 3/8	1254	24 1/4	616	12 1/4	311	38	965	4	102	1 1/2	38
WS3T-104-4*-4	61 3/8	1559	36 1/4	921	24 1/4	616	50	1270	6	152	2	51
WS3T-105-4*-4	73 3/8	1864	48 1/4	1226	36 1/4	921	62	1574	6	152	2	51
WS3T-106-4*-4	85 3/8	2169	60 1/4	1530	48 1/4	1226	74	1879	6	152	2	51
WS3T-107-4*-4	97 3/8	2473	72 1/4	1835	60 1/4	1530	86	2184	6	152	2	51
WS3T-108-4*-4	109 3/8	2778	84 1/4	2140	72 1/4	1835	98	2489	6	152	2	51
WS3T-109-4*-4	121 3/8	3083	96 1/4	2445	84 1/4	2140	110	2794	6	152	2	51
WS3T-1010-4*-4	133 3/8	3389	108 1/4	2750	96 1/4	2445	122	3098	6	152	2	51
WS3T-1011-4*-4	145 3/8	3693	120 1/4	3054	108 1/4	2750	134	3403	6	152	2	51
WS3T-1012-4*-4	157 3/8	3997	132 1/4	3359	120 1/4	3054	146	3708	6	152	2	51
WS3T-1013-4*-4	169 3/8	4302	144 1/4	3664	132 1/4	3359	158	4013	6	152	2	51
WS3T-1014-4*-4	181 3/8	4607	156 1/4	3969	144 1/4	3664	170	4318	6	152	2	51
WS3T-1015-4*-4	193 3/8	4912	168 1/4	4274	156 1/4	3969	182	4623	6	152	2	51

NOZZLE SCHEDULE

SERVICE	MARK	SHELL SIDE	MARK	TUBE SIDE
INLET	(N1)	AS PER TABLE	(N5)	3 (76) 300# FLG.
OUTLET	(N2)	AS PER TABLE	(N6)	3 (76) 300# FLG.
DRAIN	(N3)	1/2 (13) NPT	(N7)	1/2 (13) NPT
VENT	(N4)	3/4 (19) NPT		

- NOTES: 1. SUPPORTS SUPPLIED ONLY IF SPECIFIED ON ORDER.
 2. NOZZLE SIZES SHOWN ARE RECOMMENDED FOR MAX. EXCHANGER LIFE, NO EXTERNAL FORCES APPLY.
 3. FABRICATED TO ASME CODE SECTION VIII DIVISION 1 AND LATEST ADDENDA.
 4. DRAWING IS NOT TO SCALE.
 5. ALL DIM'S ±1/8 (3) UNLESS OTHERWISE SHOWN.

DESIGN CONDITIONS

	SHELL		TUBES	
DESIGN PRESSURE	150 PSIG	1034 KPa	300 PSIG	2068 KPa
DESIGN TEMPERATURE	375 °F	191 °C	375 °F	191 °C
MIN. DESIGN METAL TEMP.	35 °F	1.7 °C	35 °F	1.7 °C
HYDRO. TEST PRESSURE	225 PSIG	1551 KPa	450 PSIG	3102 KPa
CONTENTS	STEAM		WATER	

CUSTOMER:
LOCATION:

ENGINEER:
ORDER No.:
PROJECT/JOB:
LOCATION:

TAG: (QUOTE #)

TITLE G.A. 300 LB. WS SERIES HEAT EXCHANGERS	A R M S T R O N G				NUMBER WS3T-10-4P-4	REV.
DATE: 02 / 28 / 01 BY: J.R.	TORONTO - CANADA TEL : (416) 755-2291	MONTREAL - CANADA TEL : (514) 421-2424	BUFFALO - N. Y. TEL: (716) 693-8813	COLCHESTER - U.K. TEL: (44) 120-657-9491		