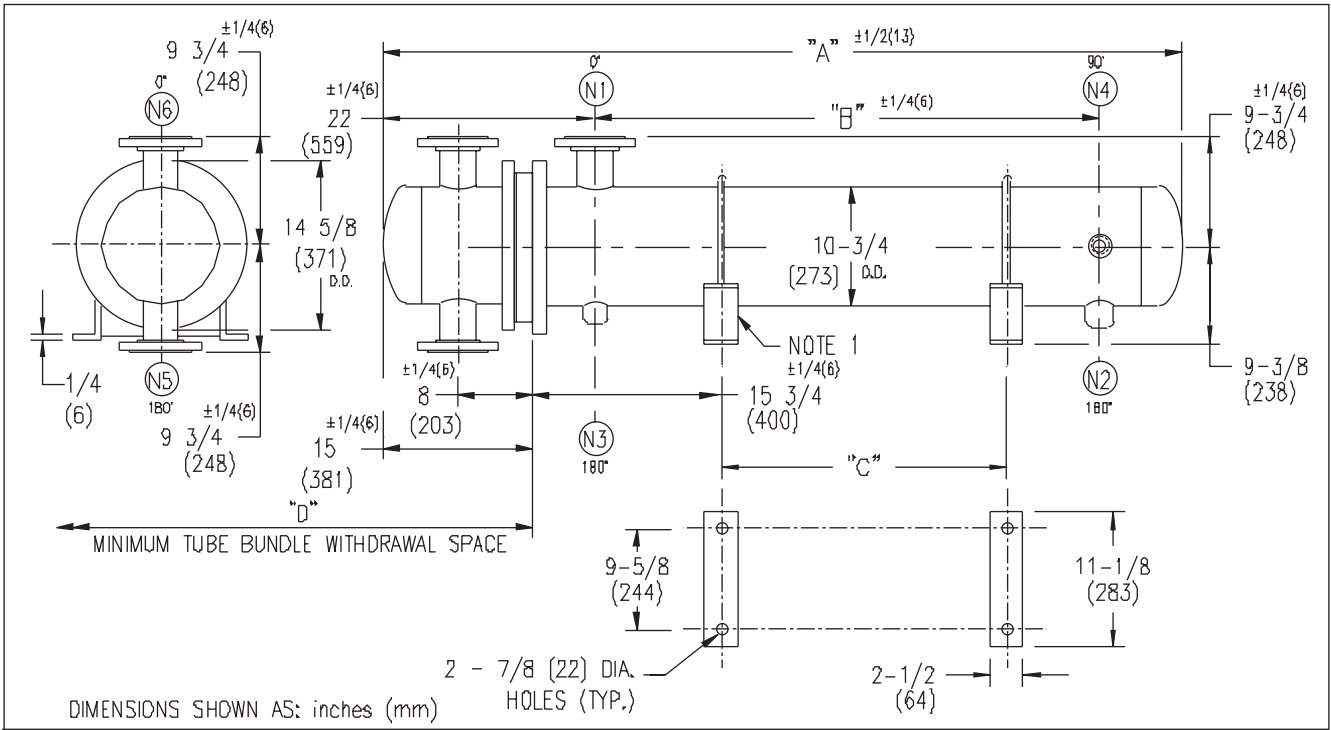


# ARMSTRONG®



EXCHANGER SIZE * - BAFFLE SPACING	DIMENSIONS											
	A		B		C		D		N1		N2	
	inches	mm	inches	mm	inches	mm	inches	mm	inches	mm	inches	mm
WS3T-102-2*-4	40 1/4	1022	12 1/4	311	-	-	26	660	4	102	1 1/2	38
WS3T-103-2*-4	52 1/4	1327	24 1/4	616	12 1/4	311	38	965	4	102	1 1/2	38
WS3T-104-2*-4	64 1/4	1632	36 1/4	921	24 1/4	616	50	1270	6	152	2	51
WS3T-105-2*-4	76 1/4	1937	48 1/4	1226	36 1/4	921	62	1574	6	152	2	51
WS3T-106-2*-4	88 1/4	2242	60 1/4	1530	48 1/4	1226	74	1879	6	152	2	51
WS3T-107-2*-4	100 1/4	2546	72 1/4	1835	60 1/4	1530	86	2184	6	152	2	51
WS3T-108-2*-4	112 1/4	2851	84 1/4	2140	72 1/4	1835	98	2489	6	152	2	51
WS3T-109-2*-4	124 1/4	3156	96 1/4	2445	84 1/4	2140	110	2794	6	152	2	51
WS3T-1010-2*-4	136 1/4	3461	108 1/4	2750	96 1/4	2445	122	3098	6	152	2	51
WS3T-1011-2*-4	148 1/4	3766	120 1/4	3054	108 1/4	2750	134	3403	6	152	2	51
WS3T-1012-2*-4	160 1/4	4070	132 1/4	3359	120 1/4	3054	146	3708	6	152	2	51
WS3T-1013-2*-4	172 1/4	4375	144 1/4	3664	132 1/4	3359	158	4013	6	152	2	51
WS3T-1014-2*-4	184 1/4	4680	156 1/4	3969	144 1/4	3664	170	4318	6	152	2	51
WS3T-1015-2*-4	196 1/4	4985	168 1/4	4274	156 1/4	3969	182	4623	6	152	2	51

NOZZLE SCHEDULE				
SERVICE	MARK	SHELL SIDE	MARK	TUBE SIDE
INLET	(N1)	AS PER TABLE	(N5)	4 (102) 300# FLG.
OUTLET	(N2)	AS PER TABLE	(N6)	4 (102) 300# FLG.
DRAIN	(N3)	1/2 (13) NPT		
VENT	(N4)	3/4 (19) NPT		

NOTES: 1. SUPPORTS SUPPLIED ONLY IF SPECIFIED ON ORDER.  
 2. NOZZLE SIZES SHOWN ARE RECOMMENDED FOR MAX. EXCHANGER LIFE.  
 3. FABRICATED TO ASME CODE SECTION VIII DIVISION 1 AND LATEST ADDENDA.  
 4. DRAWING IS NOT TO SCALE.  
 5. ALL DIMN'S ±1/8 (3) UNLESS OTHERWISE SHOWN.

DESIGN CONDITIONS				
	SHELL		TUBES	
DESIGN PRESSURE	150 PSIG	1034 KPa	300 PSIG	2068 KPa
DESIGN TEMPERATURE	375 °F	191 °C	375 °F	191 °C
MIN. DESIGN METAL TEMP.	35 °F	1.7 °C	35 °F	1.7 °C
HYDRO. TEST PRESSURE	225 PSIG	1551 KPa	450 PSIG	3102 KPa
CONTENTS	STEAM		WATER	

CUSTOMER:  
 LOCATION:  
 ENGINEER:  
 ORDER No.:  
 PROJECT/JOB:  
 LOCATION:  
 TAG: (QUOTE # )

TITLE	G.A. 300 LB. WS SERIES HEAT EXCHANGERS	A R M S T R O N G				NUMBER	WS3T-10-2P-4	REV.
DATE:	02 / 28 / 01	BY:	J.R.	TORONTO - CANADA	MONTREAL - CANADA	BUFFALO - N. Y.	COLCHESTER - U.K.	
				TEL: (416) 755-2291	TEL: (514) 421-2424	TEL: (716) 693-8813	TEL: (44) 120-657-9491	