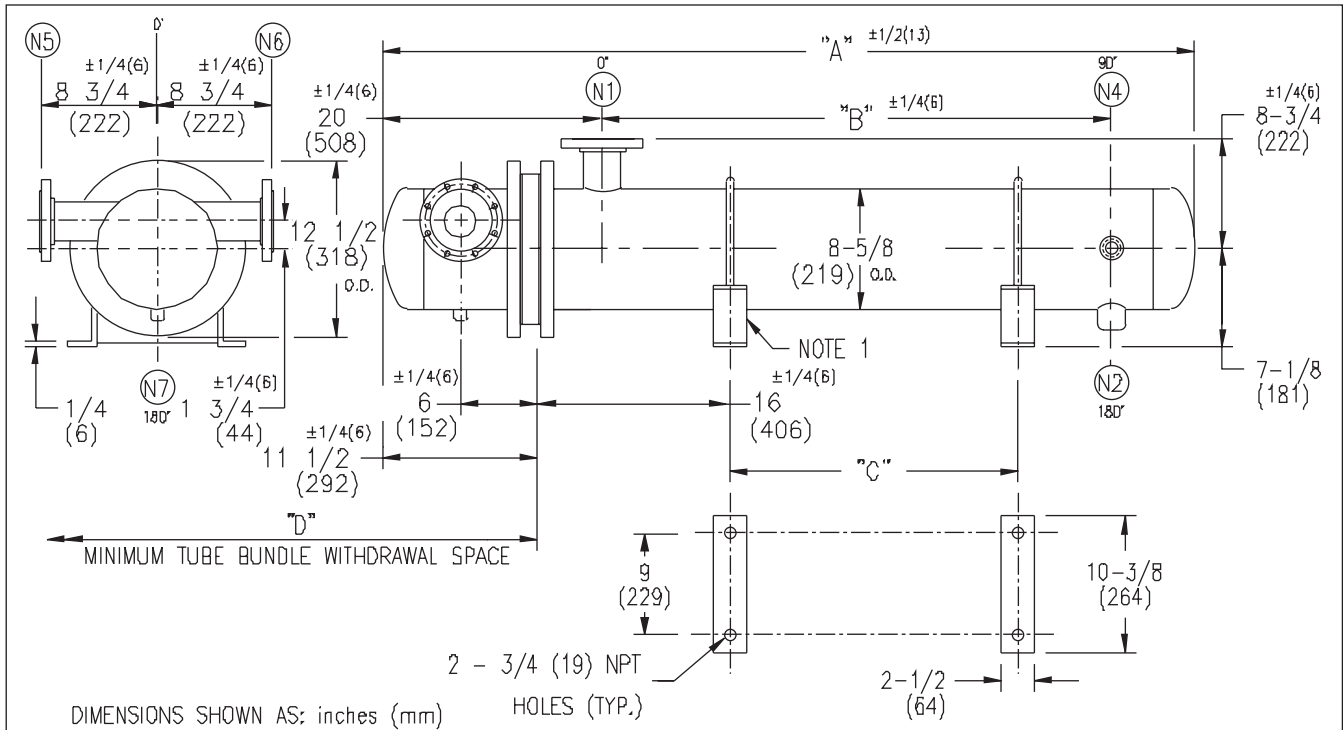


# ARMSTRONG®



EXCHANGER SIZE *BAFFLE SPACING	DIMENSIONS											
	A		B		C		D		N1		N2	
	inches	mm	inches	mm	inches	mm	inches	mm	inches	mm	inches	mm
WS3H-85-4*-4	72 3/4	1848	48 1/4	1226	35 7/8	911	62	1574	4	102	1	25
WS3H-86-4*-4	84 3/4	2153	60 1/4	1530	47 7/8	1216	74	1880	4	102	1-1/4	32
WS3H-87-4*-4	96 3/4	2457	72 1/4	1835	59 7/8	1521	86	2184	4	102	1-1/4	32
WS3H-88-4*-4	108 3/4	2762	84 1/4	2140	71 7/8	1826	98	2489	6	152	1-1/4	32
WS3H-89-4*-4	120 3/4	3067	96 1/4	2445	83 7/8	2130	110	2794	6	152	1-1/4	32
WS3H-810-4*-4	132 3/4	3372	108 1/4	2750	95 7/8	2435	122	3099	6	152	1-1/4	32
WS3H-811-4*-4	144 3/4	3677	120 1/4	3054	107 7/8	2740	134	3404	6	152	1-1/4	32
WS3H-812-4*-4	156 3/4	3981	132 1/4	3359	119 7/8	3045	146	3708	6	152	1-1/4	32
WS3H-813-4*-4	168 3/4	4286	144 1/4	3664	131 7/8	3350	158	4013	6	152	1-1/4	32
WS3H-814-4*-4	180 3/4	4591	156 1/4	3969	143 7/8	3654	170	4318	6	152	1-1/4	32

NOZZLE SCHEDULE				
SERVICE	MARK	SHELL SIDE	MARK	TUBE SIDE
INLET	N1	AS PER TABLE	N5	2 (51) 300# FLG.
OUTLET	N2	AS PER TABLE	N6	2 (51) 300# FLG.
DRAIN			N7	1/2 (13) NPT
VENT	N4	3/4 (19) NPT		

NOTES: 1. SUPPORTS SUPPLIED ONLY IF SPECIFIED ON ORDER.  
 2. NOZZLE SIZES SHOWN ARE RECOMMENDED FOR MAX. EXCHANGER LIFE, NO EXTERNAL FORCES APPLY.  
 3. FABRICATED TO ASME CODE SECTION VIII DIVISION 1 AND LATEST ADDENDA.  
 4. DRAWING IS NOT TO SCALE.  
 5. ALL DIMN'S ±1/8 (3) UNLESS OTHERWISE SHOWN.

DESIGN CONDITIONS				
	SHELL		TUBES	
DESIGN PRESSURE	300 PSIG	2068 KPa	300 PSIG	2068 KPa
DESIGN TEMPERATURE	375 °F	191 °C	375 °F	191 °C
MIN. DESIGN METAL TEMP.	35 °F	1.7 °C	35 °F	1.7 °C
HYDRO. TEST PRESSURE	450 PSIG	3102 KPa	450 PSIG	3102 KPa
CONTENTS	STEAM		WATER	

CUSTOMER: \_\_\_\_\_  
 LOCATION: \_\_\_\_\_  
 ENGINEER: \_\_\_\_\_  
 ORDER No.: \_\_\_\_\_  
 PROJECT/JOB: \_\_\_\_\_  
 LOCATION: \_\_\_\_\_  
 TAG: \_\_\_\_\_ (QUOTE # \_\_\_\_\_)

TITLE G.A. 300 LB. WS SERIES HEAT EXCHANGERS	A R M S T R O N G				NUMBER WS3H-8-4P-4(6)	REV.
DATE: 02 / 02 / 01 BY: J.R.	TORONTO - CANADA TEL : (416) 755-2281	MONTREAL - CANADA TEL : (514) 421-2424	BUFFALO - N. Y. TEL: (716) 693-8813	DOLCHESTER - U.K. TEL: (44) 120-657-9491		