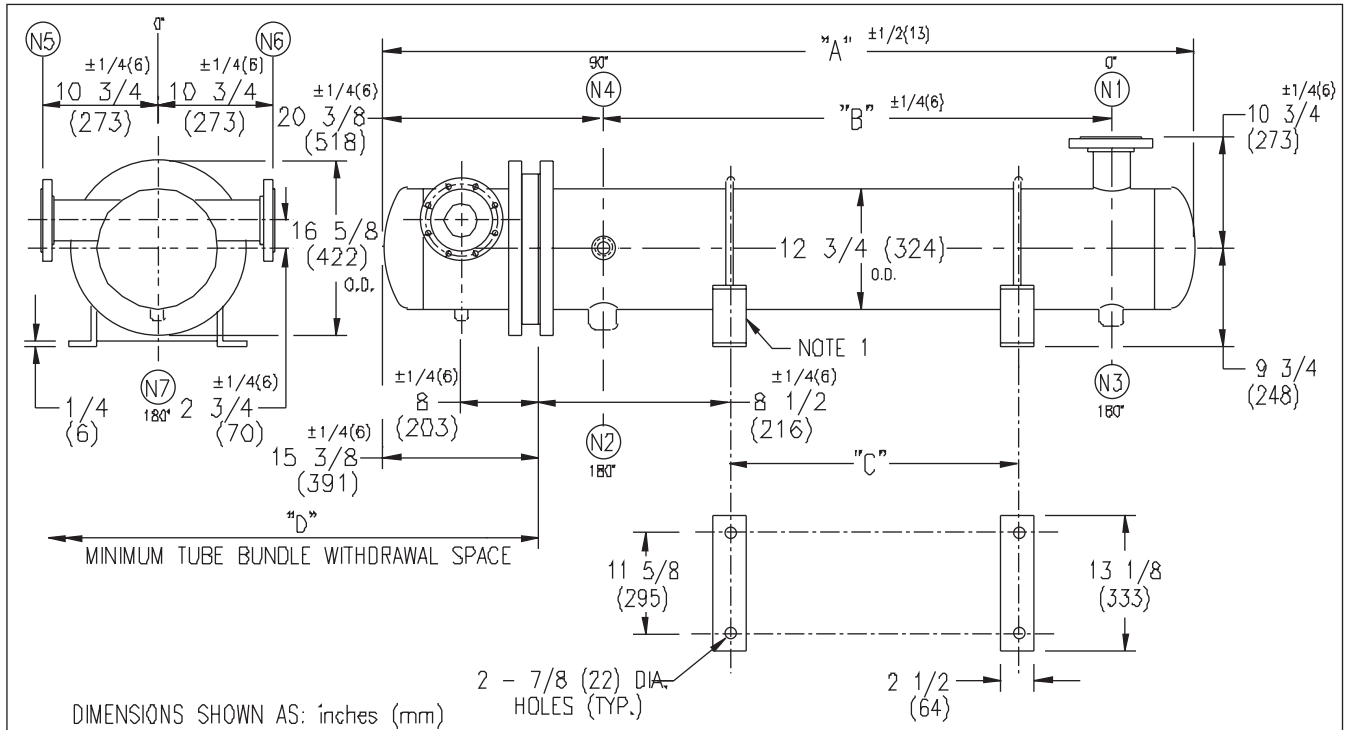


ARMSTRONG®



DIMENSIONS SHOWN AS: inches (mm)

2 - 7/8 (22) DIA. HOLES (TYP.)

2 1/2 (64)

EXCHANGER SIZE *—BAFFLE SPACING	DIMENSIONS											
	A		B		C		D		N1		N2	
	inches	mm	inches	mm	inches	mm	inches	mm	inches	mm	inches	mm
WS3H-123-4*-E4	66 3/8	1686	36 3/4	933	22 1/2	572	38	965	6	152	2	51
WS3H-124-4*-E4	78 3/8	1991	48 3/4	1238	34 1/2	876	50	1270	6	152	2	51
WS3H-125-4*-E4	90 3/8	2296	60 3/4	1543	46 1/2	1181	62	1574	6	152	2	51
WS3H-126-4*-E4	102 3/8	2600	72 3/4	1848	58 1/2	1486	74	1879	6	152	2	51
WS3H-127-4*-E4	114 3/8	2905	84 3/4	2153	70 1/2	1791	86	2184	8	203	2 1/2	64
WS3H-128-4*-E4	126 3/8	3210	96 3/4	2457	82 1/2	2096	98	2489	8	203	2 1/2	64
WS3H-129-4*-E4	138 3/8	3515	108 3/4	2762	94 1/2	2400	110	2794	8	203	2 1/2	64
WS3H-1210-4*-E4	150 3/8	3820	120 3/4	3067	106 1/2	2705	122	3098	8	203	2 1/2	64
WS3H-1211-4*-E4	162 3/8	4124	132 3/4	3372	118 1/2	3010	134	3403	8	203	2 1/2	64
WS3H-1212-4*-E4	174 3/8	4429	144 3/4	3677	130 1/2	3315	146	3708	8	203	2 1/2	64
WS3H-1213-4*-E4	186 3/8	4734	156 3/4	3981	142 1/2	3620	158	4013	8	203	2 1/2	64
WS3H-1214-4*-E4	198 3/8	5039	168 3/4	4286	154 1/2	3924	170	4318	8	203	2 1/2	64
WS3H-1215-4*-E4	210 3/8	5344	180 3/4	4591	166 1/2	4229	182	4623	8	203	2 1/2	64

NOZZLE SCHEDULE

SERVICE	MARK	SHELL SIDE	MARK	TUBE SIDE
INLET	(N1)	AS PER TABLE	(N5)	4 (102) 300# (RFSO) FLG.
OUTLET	(N2)	AS PER TABLE	(N6)	4 (102) 300# (RFSO) FLG.
DRAIN	(N3)	1/2 (13) NPT	(N7)	1/2 (13) NPT
VENT	(N4)	3/4 (19) NPT		

- NOTES: 1. SUPPORTS SUPPLIED ONLY IF SPECIFIED ON ORDER.
 2. NOZZLE SIZES SHOWN ARE RECOMMENDED FOR MAX. EXCHANGER LIFE, NO EXTERNAL FORCES APPLY.
 3. FABRICATED TO ASME CODE SECTION VIII DIVISION 1 AND LATEST ADDENDA.
 4. DRAWING IS NOT TO SCALE.
 5. ALL DIMN'S ±1/8 (3) UNLESS OTHERWISE SHOWN.

DESIGN CONDITIONS

	SHELL		TUBES	
DESIGN PRESSURE	300 PSIG	2068 KPa	300 PSIG	2068 KPa
DESIGN TEMPERATURE	375 °F	191 °C	375 °F	191 °C
MIN. DESIGN METAL TEMP.	35 °F	1.7 °C	35 °F	1.7 °C
HYDRO. TEST PRESSURE	450 PSIG	3102 KPa	450 PSIG	3102 KPa
CONTENTS	STEAM		WATER	

CUSTOMER:

LOCATION:

ENGINEER:

ORDER No.:

PROJECT/JOB:

LOCATION:

TAG:

(QUOTE #)

TITLE G.A. 300 LB. WS SERIES HEAT EXCHANGERS	A R M S T R O N G				NUMBER WS3H-12-4P-E4	REV.
DATE: 04 / 26 / D1	BY: J.R.	TORONTO - CANADA TEL : (416) 755-2291	MONTREAL - CANADA TEL : (514) 421-2424	BUFFALO - N. Y. TEL: (716) 693-8813	COLCHESTER - U.K. TEL: (44) 120-657-9491	