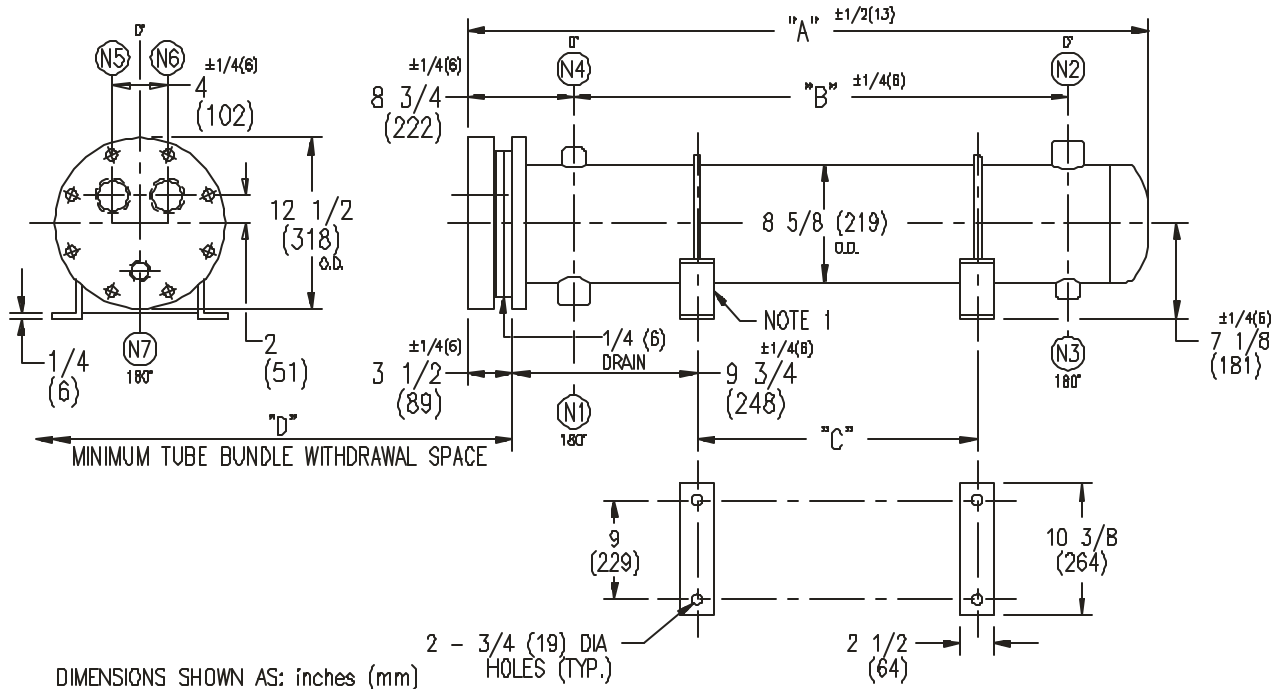


# ARMSTRONG®



EXCHANGER SIZE * BAFFLE SPACING	DIMENSIONS											
	A		B		C		D		(N1)		(N2)	
	inches	mm	inches	mm	inches	mm	inches	mm	inches	mm	inches	mm
WX-82-4*-3	29 1/4	743	14 1/2	368	6	152	28	711	3	76	3	76
WX-83-4*-3	41 1/4	1048	26 1/2	673	18	457	40	1016	3	76	3	76
WX-84-4*-3	53 1/4	1353	38 1/2	978	30	762	52	1321	3	76	3	76
WX-85-4*-3	65 1/4	1657	50 1/2	1283	42	1067	64	1626	3	76	3	76
WX-86-4*-3	77 1/4	1962	62 1/2	1588	54	1372	76	1930	3	76	3	76
WX-87-4*-3	89 1/4	2267	74 1/2	1892	66	1676	88	2235	3	76	3	76
WX-88-4*-3	101 1/4	2572	86 1/2	2197	78	1981	100	2540	3	76	3	76
WX-89-4*-3	113 1/4	2877	98 1/2	2502	90	2286	112	2845	3	76	3	76
WX-810-4*-3	125 1/4	3181	110 1/2	2807	102	2591	124	3150	3	76	3	76
WX-811-4*-3	137 1/4	3486	122 1/2	3112	114	2896	136	3454	3	76	3	76
WX-812-4*-3	149 1/4	3791	134 1/2	3416	126	3200	148	3759	3	76	3	76
WX-813-4*-3	161 1/4	4096	146 1/2	3721	138	3505	160	4064	3	76	3	76
WX-814-4*-3	173 1/4	4401	158 1/2	4026	150	3810	172	4369	3	76	3	76

### NOZZLE SCHEDULE

SERVICE	MARK	SHELL SIDE	MARK	TUBE SIDE
INLET	(N1)	AS PER TABLE	(N5)	2 (51) NPT
OUTLET	(N2)	AS PER TABLE	(N6)	2 (51) NPT
DRAIN	(N3)	1/2 (13) NPT	(N7)	1/2 (13) NPT
VENT	(N4)	3/4 (19) NPT		

- NOTES:
1. SUPPORTS SUPPLIED ONLY IF SPECIFIED ON ORDER
  2. NOZZLE SIZES SHOWN ARE RECOMMENDED FOR MAX. EXCHANGER LIFE, NO EXTERNAL FORCES APPLY.
  3. FABRICATED TO ASME CODE SECTION VIII DIVISION 1 AND LATEST ADDENDA.
  4. DRAWING IS NOT TO SCALE
  5. ALL DIMN'S ±1/8 (3) UNLESS OTHERWISE SHOWN.

### DESIGN CONDITIONS

	SHELL		TUBES	
	PSIG	KPa	PSIG	KPa
DESIGN PRESSURE	150	1034	150	1034
DESIGN TEMPERATURE	375 °F	191 °C	375 °F	191 °C
MIN. DESIGN METAL TEMP	35 °F	1.7 °C	35 °F	1.7 °C
HYDRO. TEST PRESSURE	225	1551	225	1551
CONTENTS	WATER		WATER	

CUSTOMER:  
LOCATION:

ENGINEER:  
ORDER No.:  
PROJECT/JOB:  
LOCATION:

TAG: (QUOTE # )

TITLE	A R M S T R O N G				NUMBER	REV.
G.A. 150 LB WX SERIES HEAT EXCHANGERS	TORONTO - CANADA	MONTREAL - CANADA	BUFFALO - N. Y.	COLCHESTER - U.K.	WX-8-4P-3(3)	
DATE: 12/01/94 BY: D.C.R.	TEL: (416) 755-2291	TEL: (514) 421-2424	TEL: (716) 683-8813	TEL: (44) 120-657-9481		