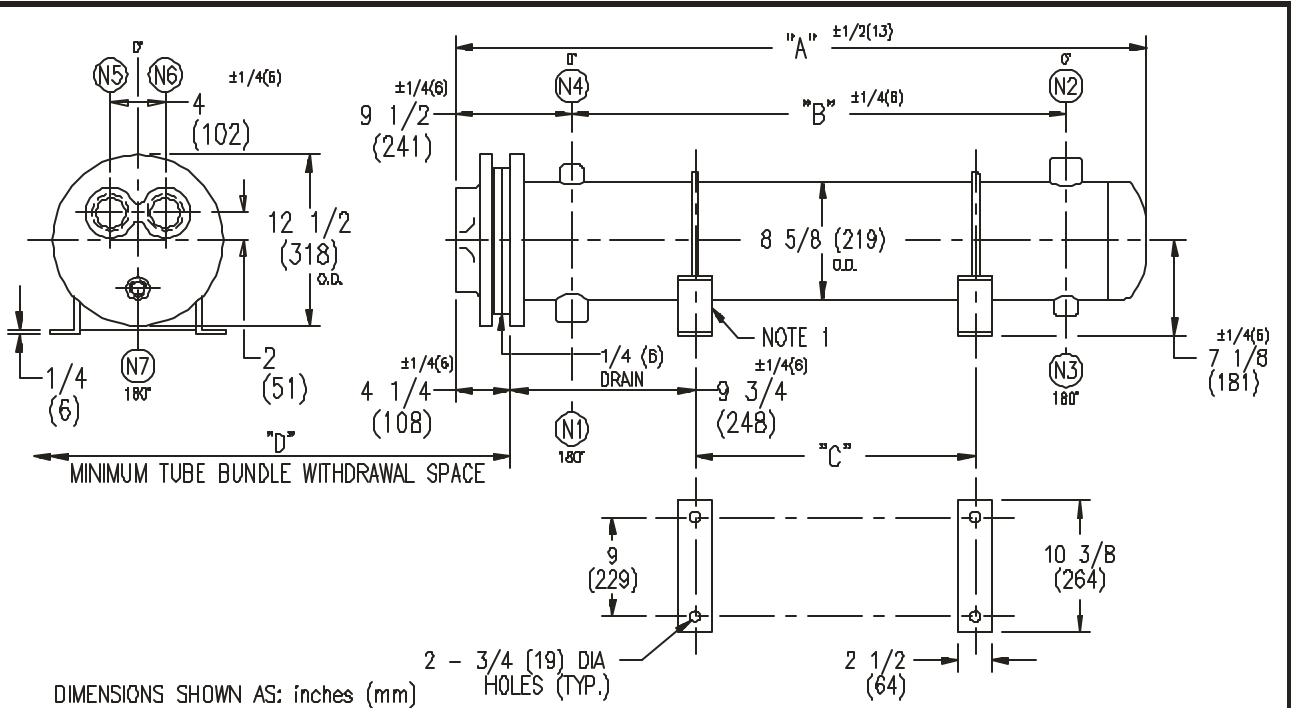


ARMSTRONG®



EXCHANGER SIZE * - BAFFLE SPACING	DIMENSIONS											
	A		B		C		D		N1		N2	
	inches	mm	inches	mm	inches	mm	inches	mm	inches	mm	inches	mm
WX-82-4*-1	30	762	14 1/2	368	6	152	27	686	3	76	3	76
WX-83-4*-1	42	1067	26 1/2	673	18	457	39	991	3	76	3	76
WX-84-4*-1	54	1372	38 1/2	978	30	762	51	1295	3	76	3	76
WX-85-4*-1	66	1676	50 1/2	1283	42	1067	63	1600	3	76	3	76
WX-86-4*-1	78	1981	62 1/2	1588	54	1372	75	1905	3	76	3	76
WX-87-4*-1	90	2286	74 1/2	1892	66	1676	87	2210	3	76	3	76
WX-88-4*-1	102	2591	86 1/2	2197	78	1981	99	2515	3	76	3	76
WX-89-4*-1	114	2896	98 1/2	2502	90	2286	111	2819	3	76	3	76
WX-810-4*-1	126	3200	110 1/2	2807	102	2591	123	3124	3	76	3	76
WX-811-4*-1	138	3505	122 1/2	3112	114	2896	135	3429	3	76	3	76
WX-812-4*-1	150	3810	134 1/2	3416	126	3200	147	3734	3	76	3	76
WX-813-4*-1	162	4115	146 1/2	3721	138	3505	159	4039	3	76	3	76
WX-814-4*-1	174	4420	158 1/2	4026	150	3810	171	4343	3	76	3	76

NOZZLE SCHEDULE				
SERVICE	MARK	SHELL SIDE	MARK	TUBE SIDE
INLET	(N1)	AS PER TABLE	(N5)	2 (51) NPT
OUTLET	(N2)	AS PER TABLE	(N6)	2 (51) NPT
DRAIN	(N3)	1/2 (13) NPT	(N7)	1/2 (13) NPT
VENT	(N4)	3/4 (19) NPT		

NOTES: 1. SUPPORTS SUPPLIED ONLY IF SPECIFIED ON ORDER
 2. NOZZLE SIZES SHOWN ARE RECOMMENDED FOR MAX. EXCHANGER LIFE, NO EXTERNAL FORCES APPLY.
 3. FABRICATED TO ASME CODE SECTION VIII DIVISION 1 AND LATEST ADDENDA.
 4. DRAWING IS NOT TO SCALE
 5. ALL DIM'S ±1/8 (3) UNLESS OTHERWISE SHOWN.

DESIGN CONDITIONS				
	SHELL		TUBES	
DESIGN PRESSURE	150 PSIG	1034 KPa	150 PSIG	1034 KPa
DESIGN TEMPERATURE	375 °F	191 °C	375 °F	191 °C
MIN. DESIGN METAL TEMP	35 °F	1.7 °C	35 °F	1.7 °C
HYDRO. TEST PRESSURE	225 PSIG	1551 KPa	300 PSIG	2068 KPa
CONTENTS	WATER		WATER	

CUSTOMER:
 LOCATION:
 ENGINEER:
 ORDER No.:
 PROJECT/JOB:
 LOCATION:
 TAG: (QUOTE #)

TITLE G.A. 150 LB WX SERIES HEAT EXCHANGERS	A R M S T R O N G				NUMBER WX-8-4P-1(3)	REV.
DATE: 12 / 01 / 94 BY D.C.R.	TORONTO - CANADA TEL: (416) 756-2281	MONTREAL - CANADA TEL: (514) 421-2424	BUFFALO - N. Y. TEL: (716) 683-8813	COLCHESTER - U.K. TEL: (44) 120-657-9491		