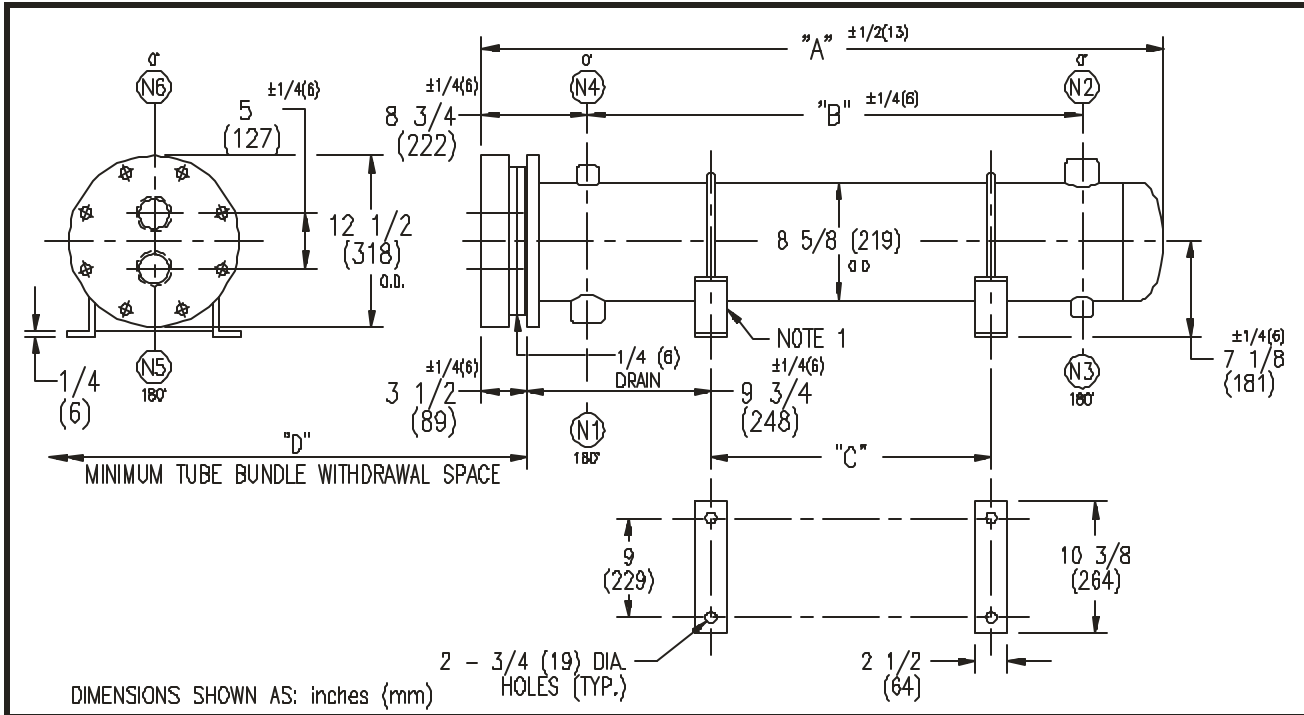


ARMSTRONG®



EXCHANGER SIZE *-BAFFLE SPACING	DIMENSIONS											
	A		B		C		D		(N1)		(N2)	
	inches	mm	inches	mm	inches	mm	inches	mm	inches	mm	inches	mm
WX-82-2*-3	29 1/4	743	14 1/2	368	6	152	28	711	3	76	3	76
WX-83-2*-3	41 1/4	1048	26 1/2	673	18	457	40	1016	3	76	3	76
WX-84-2*-3	53 1/4	1353	38 1/2	978	30	762	52	1321	3	76	3	76
WX-85-2*-3	65 1/4	1657	50 1/2	1283	42	1067	64	1626	3	76	3	76
WX-86-2*-3	77 1/4	1962	62 1/2	1588	54	1372	76	1930	3	76	3	76
WX-87-2*-3	89 1/4	2267	74 1/2	1892	66	1676	88	2235	3	76	3	76
WX-88-2*-3	101 1/4	2572	86 1/2	2197	78	1981	100	2540	3	76	3	76
WX-89-2*-3	113 1/4	2877	98 1/2	2502	90	2286	112	2845	3	76	3	76
WX-810-2*-3	125 1/4	3181	110 1/2	2807	102	2591	124	3150	3	76	3	76
WX-811-2*-3	137 1/4	3486	122 1/2	3112	114	2896	136	3454	3	76	3	76
WX-812-2*-3	149 1/4	3791	134 1/2	3416	126	3200	148	3759	3	76	3	76
WX-813-2*-3	161 1/4	4096	146 1/2	3721	138	3505	160	4064	3	76	3	76
WX-814-2*-3	173 1/4	4401	158 1/2	4026	150	3810	172	4369	3	76	3	76

NOZZLE SCHEDULE				
SERVICE	MARK	SHELL SIDE	MARK	TUBE SIDE
INLET	(N1)	AS PER TABLE	(N5)	3 (76) NPT
OUTLET	(N2)	AS PER TABLE	(N6)	3 (76) NPT
DRAIN	(N3)	1/2 (13) NPT		
VENT	(N4)	3/4 (19) NPT		

NOTES: 1. SUPPORTS SUPPLIED ONLY IF SPECIFIED ON ORDER.
 2. NOZZLE SIZES SHOWN ARE RECOMMENDED FOR MAX. EXCHANGER LIFE, NO EXTERNAL FORCES APPLY.
 3. FABRICATED TO ASME CODE SECTION VIII DIVISION 1 AND LATEST ADDENDA.
 4. DRAWING IS NOT TO SCALE.
 5. ALL DIM'S ±1/8 (3) UNLESS OTHERWISE SHOWN.

DESIGN CONDITIONS				
	SHELL		TUBES	
DESIGN PRESSURE	150 PSIG	1034 KPa	150 PSIG	1034 KPa
DESIGN TEMPERATURE	375 °F	191 °C	375 °F	191 °C
MIN DESIGN METAL TEMP.	35 °F	1.7 °C	35 °F	1.7 °C
HYDRO. TEST PRESSURE	225 PSIG	1551 KPa	225 PSIG	1551 KPa
CONTENTS	WATER		WATER	

CUSTOMER:
 LOCATION:
 ENGINEER:
 ORDER No.:
 PROJECT/JOB:
 LOCATION:
 TAG: (QUOTE #)

TITLE G.A. 150 LB. WX SERIES HEAT EXCHANGERS	A R M S T R O N G				NUMBER WX-8-2P-3(3)	REV.
DATE 12/01/94 BY: D.C.R.	TORONTO - CANADA TEL: (416) 755-2281	MONTREAL - CANADA TEL: (514) 421-2424	BUFFALO - N.Y. TEL: (716) 693-8813	COLCHESTER - U.K. TEL: (44) 120-657-8491		