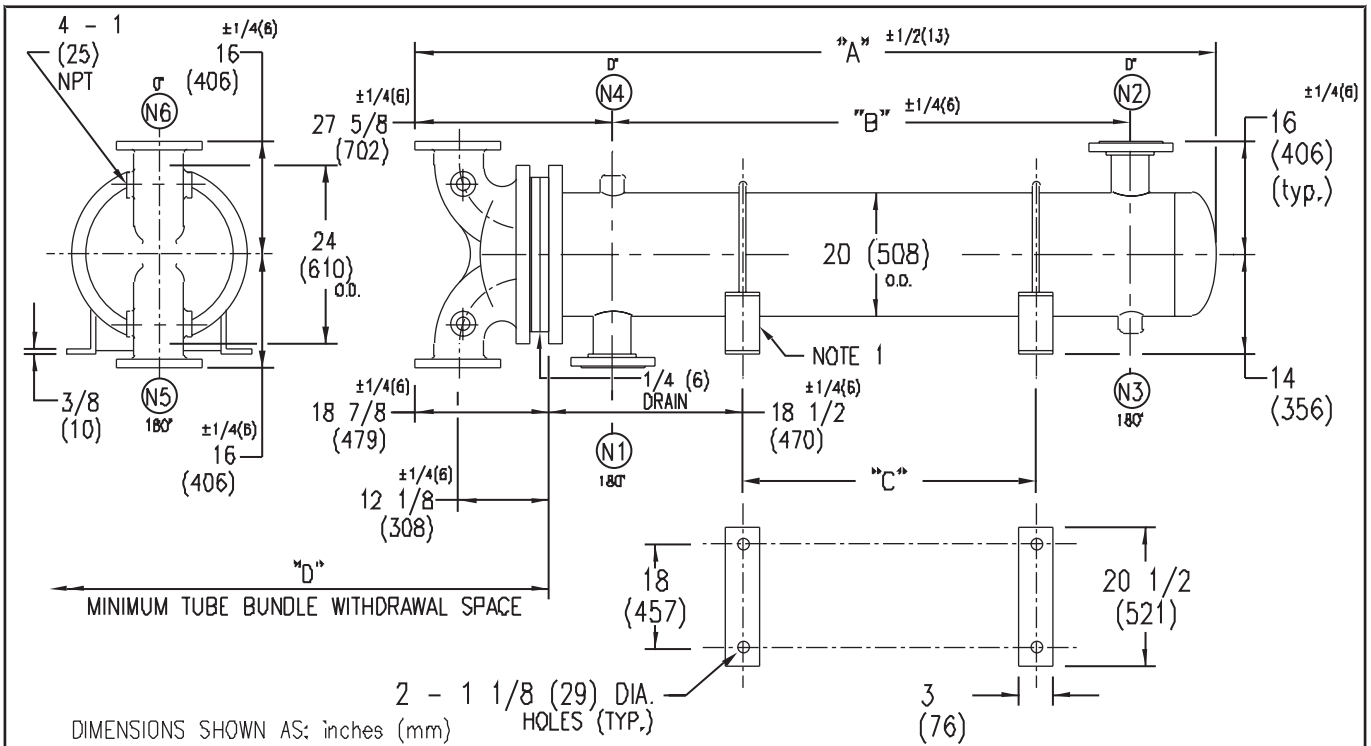


ARMSTRONG®



EXCHANGER SIZE *-BAFFLE SPACING	DIMENSIONS											
	A		B		C		D		N1		N2	
	inches	mm	inches	mm	inches	mm	inches	mm	inches	mm	inches	mm
WX-204-2*-2	68 7/8	1749	30 1/2	775	15	381	53	1346	8	203	8	203
WX-205-2*-2	80 7/8	2054	42 1/2	1080	27	686	65	1651	8	203	8	203
WX-206-2*-2	92 7/8	2359	54 1/2	1384	39	991	77	1956	8	203	8	203
WX-207-2*-2	104 7/8	2664	66 1/2	1689	51	1295	89	2261	8	203	8	203
WX-208-2*-2	116 7/8	2969	78 1/2	1994	63	1600	101	2565	8	203	8	203
WX-209-2*-2	128 7/8	3273	90 1/2	2299	75	1905	113	2870	8	203	8	203
WX-2010-2*-2	140 7/8	3578	102 1/2	2604	87	2210	125	3175	8	203	8	203
WX-2011-2*-2	152 7/8	3883	114 1/2	2908	99	2515	137	3480	8	203	8	203
WX-2012-2*-2	164 7/8	4188	126 1/2	3213	111	2819	149	3785	8	203	8	203
WX-2013-2*-2	176 7/8	4493	138 1/2	3518	123	3124	161	4089	8	203	8	203
WX-2014-2*-2	188 7/8	4797	150 1/2	3823	135	3429	173	4394	8	203	8	203
WX-2015-2*-2	200 7/8	5102	162 1/2	4128	147	3734	185	4699	8	203	8	203

NOZZLE SCHEDULE				
SERVICE	MARK	SHELL SIDE	MARK	TUBE SIDE
INLET	N1	AS PER TABLE	N5	8 (203) FLG
OUTLET	N2	AS PER TABLE	N6	8 (203) FLG
DRAIN	N3	1/2 (13) NPT		
VENT	N4	3/4 (19) NPT		

NOTES: 1. SUPPORTS SUPPLIED ONLY IF SPECIFIED ON ORDER.
 2. NOZZLE SIZES SHOWN ARE RECOMMENDED FOR MAX. EXCHANGER LIFE, NO EXTERNAL FORCES APPLY.
 3. FABRICATED TO ASME CODE SECTION VIII DIVISION 1 AND LATEST ADDENDA.
 4. DRAWING IS NOT TO SCALE.
 5. ALL DIMN'S ±1/8 (3) UNLESS OTHERWISE SHOWN.

DESIGN CONDITIONS				
	SHELL		TUBES	
DESIGN PRESSURE	150 PSIG	1034 KPa	150 PSIG	1034 KPa
DESIGN TEMPERATURE	375 °F	191 °C	375 °F	191 °C
MIN. DESIGN METAL TEMP.	40 °F	4.4 °C	40 °F	4.4 °C
HYDRO. TEST PRESSURE	225 PSIG	1551 KPa	300 PSIG	2068 KPa
CONTENTS	WATER		WATER	

CUSTOMER:
 LOCATION:
 ENGINEER:
 ORDER No.:
 PROJECT/JOB:
 LOCATION:
 TAG: (QUOTE #)

TITLE G.A. 150 LB. WX SERIES HEAT EXCHANGERS	A R M S T R O N G				NUMBER WX-20-2P-2(8)	REV. A 2001 J.R.
DATE: 12 / 01 / 94 BY: D.C.R.	TORONTO - CANADA TEL: (416) 755-2291	MONTREAL - CANADA TEL: (514) 421-2424	BUFFALO - N. Y. TEL: (716) 893-8813	COLCHESTER - U.K. TEL: (44) 120-657-9491		