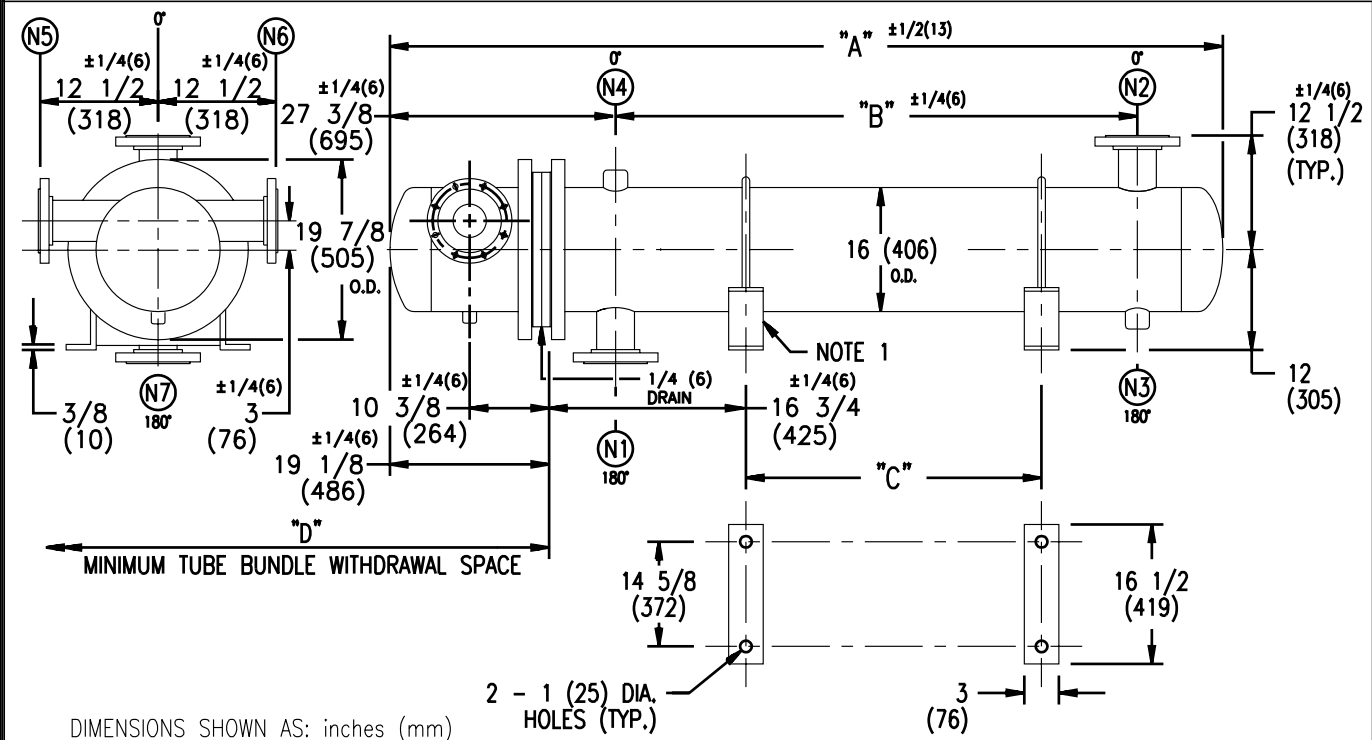


# ARMSTRONG®



DIMENSIONS SHOWN AS: inches (mm)

EXCHANGER SIZE *BAFFLE SPACING	DIMENSIONS											
	A		B		C		D		(N1)		(N2)	
	inches	mm	inches	mm	inches	mm	inches	mm	inches	mm	inches	mm
WX-164-4*-4	69 1/8	1756	32 1/4	819	17 3/4	451	52	1321	8	203	8	203
WX-165-4*-4	81 1/8	2061	44 1/4	1124	29 3/4	756	64	1626	8	203	8	203
WX-166-4*-4	93 1/8	2365	56 1/4	1429	41 3/4	1060	76	1930	8	203	8	203
WX-167-4*-4	105 1/8	2670	68 1/4	1734	53 3/4	1365	88	2235	8	203	8	203
WX-168-4*-4	117 1/8	2975	80 1/4	2038	65 3/4	1670	100	2540	8	203	8	203
WX-169-4*-4	129 1/8	3280	92 1/4	2343	77 3/4	1975	112	2845	8	203	8	203
WX-1610-4*-4	141 1/8	3585	104 1/4	2648	89 3/4	2280	124	3150	8	203	8	203
WX-1611-4*-4	153 1/8	3889	116 1/4	2953	101 3/4	2584	136	3454	8	203	8	203
WX-1612-4*-4	165 1/8	4194	128 1/4	3258	113 3/4	2889	148	3759	8	203	8	203
WX-1613-4*-4	177 1/8	4499	140 1/4	3562	125 3/4	3194	160	4064	8	203	8	203
WX-1614-4*-4	189 1/8	4804	152 1/4	3867	137 3/4	3499	172	4369	8	203	8	203
WX-1615-4*-4	201 1/8	5109	164 1/4	4172	149 3/4	3804	184	4674	8	203	8	203

NOZZLE SCHEDULE				
SERVICE	MARK	SHELL SIDE	MARK	TUBE SIDE
INLET	(N1)	AS PER TABLE	(N5)	4 (102) FLG
OUTLET	(N2)	AS PER TABLE	(N6)	4 (102) FLG
DRAIN	(N3)	1/2 (13) NPT	(N7)	1/2 (13) NPT
VENT	(N4)	3/4 (19) NPT		

- NOTES: 1. SUPPORTS SUPPLIED ONLY IF SPECIFIED ON ORDER.  
 2. NOZZLE SIZES SHOWN ARE RECOMMENDED FOR MAXIMUM EXCHANGER LIFE.  
 3. FABRICATED TO ASME CODE SECTION VIII DIVISION 1 AND LATEST ADDENDA.  
 4. DRAWING IS NOT TO SCALE.  
 5. ALL DIMN'S ±1/8 (3) UNLESS OTHERWISE SHOWN.

DESIGN CONDITIONS				
	SHELL		TUBES	
DESIGN PRESSURE	150 PSIG	1034 KPa	150 PSIG	1034 KPa
DESIGN TEMPERATURE	375 °F	191 °C	375 °F	191 °C
MIN. DESIGN METAL TEMP.	40 °F	4.4 °C	40 °F	4.4 °C
HYDRO. TEST PRESSURE	225 PSIG	1551 KPa	225 PSIG	1551 KPa
CONTENTS	WATER		WATER	

CUSTOMER:  
 LOCATION:  
 ENGINEER:  
 ORDER No.:  
 PROJECT/JOB:  
 LOCATION:  
 TAG: (QUOTE # )

TITLE	A R M S T R O N G				NUMBER	REV.
G.A. 150 LB. W SERIES HEAT EXCHANGERS	TORONTO - CANADA	MONTREAL - CANADA	BUFFALO - N. Y.	COLCHESTER - U.K.	WX-16-4P-4-(8)	
DATE: 12/01/94 BY: D.C.R.	TEL: (416) 755-2291	TEL: (514) 421-2424	TEL: (716) 693-8813	TEL: (44) 120-657-9491		