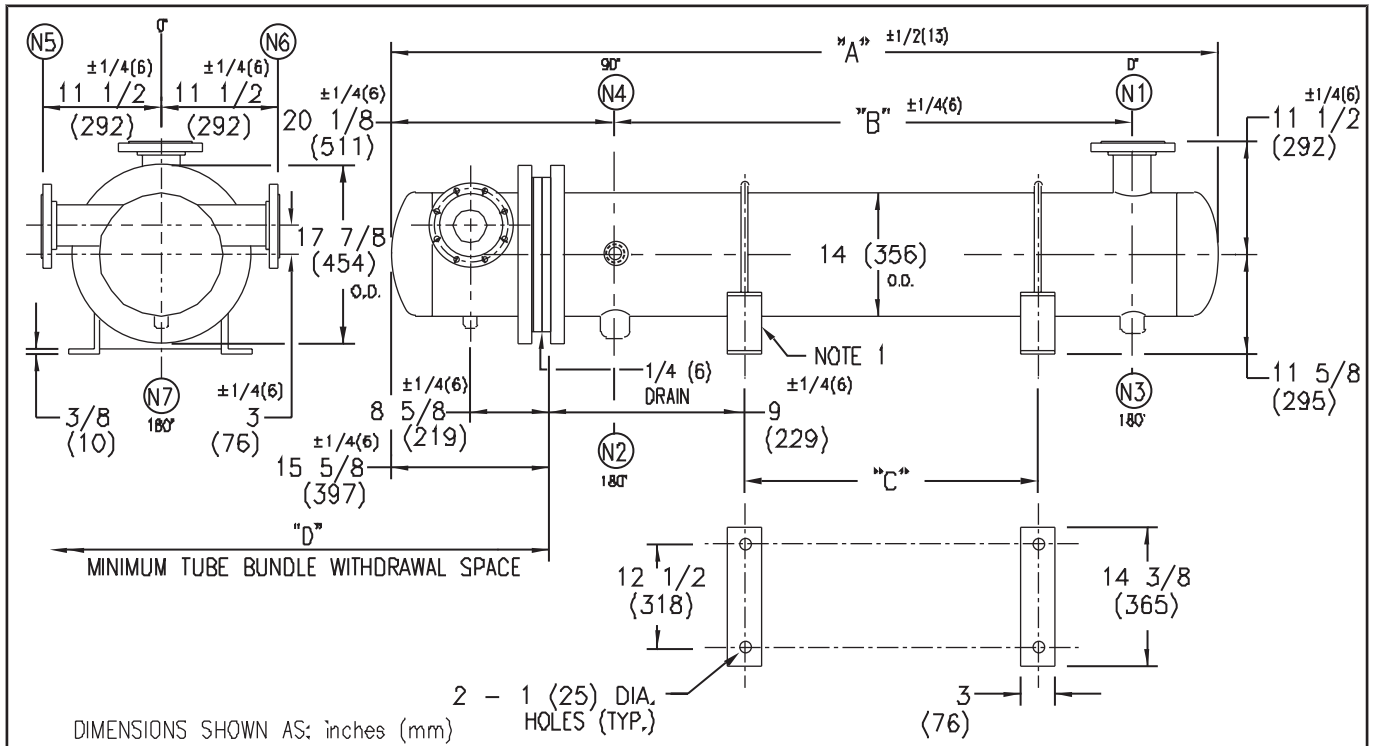


ARMSTRONG®



EXCHANGER SIZE	DIMENSIONS											
	A		B		C		D		(N1)		(N2)	
	inches	mm	inches	mm	inches	mm	inches	mm	inches	mm	inches	mm
WSX-143-4E4	66 3/8	1686	37	940	26	660	40	1016	6	152	2	51
WSX-144-4E4	78 3/8	1991	49	1245	38	965	52	1321	6	152	2	51
WSX-145-4E4	90 3/8	2296	61	1549	50	1270	64	1626	8	203	2 1/2	64
WSX-146-4E4	102 3/8	2600	73	1854	62	1575	76	1930	8	203	2 1/2	64
WSX-147-4E4	114 3/8	2905	85	2159	74	1880	88	2235	8	203	2 1/2	64
WSX-148-4E4	126 3/8	3210	97	2464	86	2184	100	2540	8	203	2 1/2	64
WSX-149-4E4	138 3/8	3515	109	2769	98	2489	112	2845	8	203	2 1/2	64
WSX-1410-4E4	150 3/8	3820	121	3073	110	2794	124	3150	8	203	2 1/2	64
WSX-1411-4E4	162 3/8	4124	133	3378	122	3099	136	3454	8	203	2 1/2	64
WSX-1412-4E4	174 3/8	4429	145	3683	134	3404	148	3759	8	203	2 1/2	64
WSX-1413-4E4	186 3/8	4734	157	3988	146	3708	160	4064	8	203	2 1/2	64
WSX-1414-4E4	198 3/8	5039	169	4293	158	4013	172	4369	8	203	2 1/2	64
WSX-1415-4E4	210 3/8	5344	181	4597	170	4318	184	4674	8	203	2 1/2	64

NOZZLE SCHEDULE				
SERVICE	MARK	SHELL SIDE	MARK	TUBE SIDE
INLET	(N1)	AS PER TABLE	(N5)	4 (102) FLG
OUTLET	(N2)	AS PER TABLE	(N6)	4 (102) FLG
DRAIN	(N3)	1/2 (13) NPT	(N7)	1/2 (13) NPT
VENT	(N4)	3/4 (19) NPT		

NOTES: 1. SUPPORTS SUPPLIED ONLY IF SPECIFIED ON ORDER.
 2. NOZZLE SIZES SHOWN ARE RECOMMENDED FOR MAX. EXCHANGER LIFE, NO EXTERNAL FORCES APPLY.
 3. FABRICATED TO ASME CODE SECTION VIII DIVISION 1 AND LATEST ADDENDA.
 4. DRAWING IS NOT TO SCALE.
 5. ALL DIMN'S ±1/8 (3) UNLESS OTHERWISE SHOWN.

DESIGN CONDITIONS				
	SHELL		TUBES	
DESIGN PRESSURE	150 PSIG	1034 KPa	150 PSIG	1034 KPa
DESIGN TEMPERATURE	375 °F	191 °C	375 °F	191 °C
MIN. DESIGN METAL TEMP.	40 °F	4.4 °C	40 °F	4.4 °C
HYDRO. TEST PRESSURE	225 PSIG	1551 KPa	225 PSIG	1551 KPa
CONTENTS	STEAM		WATER	

CUSTOMER:
 LOCATION:
 ENGINEER:
 ORDER No.:
 PROJECT/JOB:
 LOCATION:
 TAG: (QUOTE #)

TITLE G.A. 150 LB. WSX SERIES HEAT EXCHANGERS	A R M S T R O N G				NUMBER WSX-14-4P-E4	REV. A 2001 J.R.
DATE: 12 / 01 / 94 BY: D.C.R.	TORONTO - CANADA TEL: (416) 755-2291	MONTREAL - CANADA TEL: (514) 421-2424	BUFFALO - N. Y. TEL: (716) 893-8813	COLCHESTER - U.K. TEL: (44) 120-657-9491		