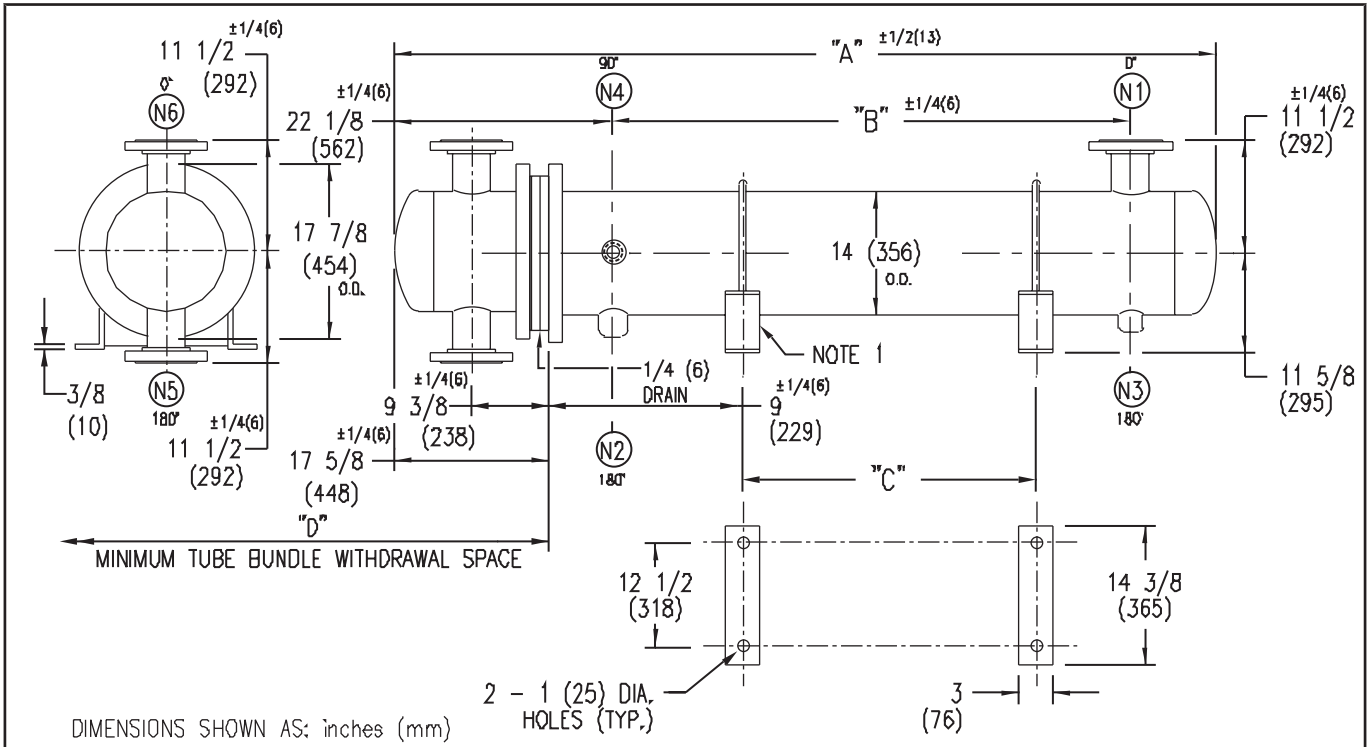


ARMSTRONG®



EXCHANGER SIZE	DIMENSIONS											
	A		B		C		D		(N1)		(N2)	
	inches	mm	inches	mm	inches	mm	inches	mm	inches	mm	inches	mm
WSX-143-2E4	68 3/8	1737	37	940	26	660	40	1016	6	152	2	51
WSX-144-2E4	80 3/8	2042	49	1245	38	965	52	1321	6	152	2	51
WSX-145-2E4	92 3/8	2346	61	1549	50	1270	64	1626	8	203	2 1/2	64
WSX-146-2E4	104 3/8	2651	73	1854	62	1575	76	1930	8	203	2 1/2	64
WSX-147-2E4	116 3/8	2956	85	2159	74	1880	88	2235	8	203	2 1/2	64
WSX-148-2E4	128 3/8	3261	97	2464	86	2184	100	2540	8	203	2 1/2	64
WSX-149-2E4	140 3/8	3566	109	2769	98	2489	112	2845	8	203	2 1/2	64
WSX-1410-2E4	152 3/8	3870	121	3073	110	2794	124	3150	8	203	2 1/2	64
WSX-1411-2E4	164 3/8	4175	133	3378	122	3099	136	3454	8	203	2 1/2	64
WSX-1412-2E4	176 3/8	4480	145	3683	134	3404	148	3759	8	203	2 1/2	64
WSX-1413-2E4	188 3/8	4785	157	3988	146	3708	160	4064	8	203	2 1/2	64
WSX-1414-2E4	200 3/8	5090	169	4293	158	4013	172	4369	8	203	2 1/2	64
WSX-1415-2E4	212 3/8	5394	181	4597	170	4318	184	4674	8	203	2 1/2	64

NOZZLE SCHEDULE				
SERVICE	MARK	SHELL SIDE	MARK	TUBE SIDE
INLET	(N1)	AS PER TABLE	(N5)	6 (152) FLG
OUTLET	(N2)	AS PER TABLE	(N6)	6 (152) FLG
DRAIN	(N3)	1/2 (13) NPT		
VENT	(N4)	3/4 (19) NPT		

- NOTES: 1. SUPPORTS SUPPLIED ONLY IF SPECIFIED ON ORDER.
 2. NOZZLE SIZES SHOWN ARE RECOMMENDED FOR MAX. EXCHANGER LIFE, NO EXTERNAL FORCES APPLY.
 3. FABRICATED TO ASME CODE SECTION VIII DIVISION 1 AND LATEST ADDENDA.
 4. DRAWING IS NOT TO SCALE.
 5. ALL DIM'S ±1/8 (3) UNLESS OTHERWISE SHOWN.

DESIGN CONDITIONS				
	SHELL		TUBES	
DESIGN PRESSURE	150 PSIG	1034 KPa	150 PSIG	1034 KPa
DESIGN TEMPERATURE	375 °F	191 °C	375 °F	191 °C
MIN. DESIGN METAL TEMP.	40 °F	4.4 °C	40 °F	4.4 °C
HYDRO. TEST PRESSURE	225 PSIG	1551 KPa	225 PSIG	1551 KPa
CONTENTS	STEAM		WATER	

CUSTOMER: _____
 LOCATION: _____
 ENGINEER: _____
 ORDER No.: _____
 PROJECT/JOB: _____
 LOCATION: _____
 TAG: _____ (QUOTE # _____)

TITLE: G.A. 150 LB. WSX SERIES HEAT EXCHANGERS	A R M S T R O N G				NUMBER: WSX-14-2P-E4	REV. A 2001 J.R.
DATE: 12/01/94 BY: D.C.R.	TORONTO - CANADA TEL: (416) 755-2291	MONTREAL - CANADA TEL: (514) 421-2424	BUFFALO - N. Y. TEL: (716) 693-8813	COLCHESTER - U.K. TEL: (44) 120-657-9491		