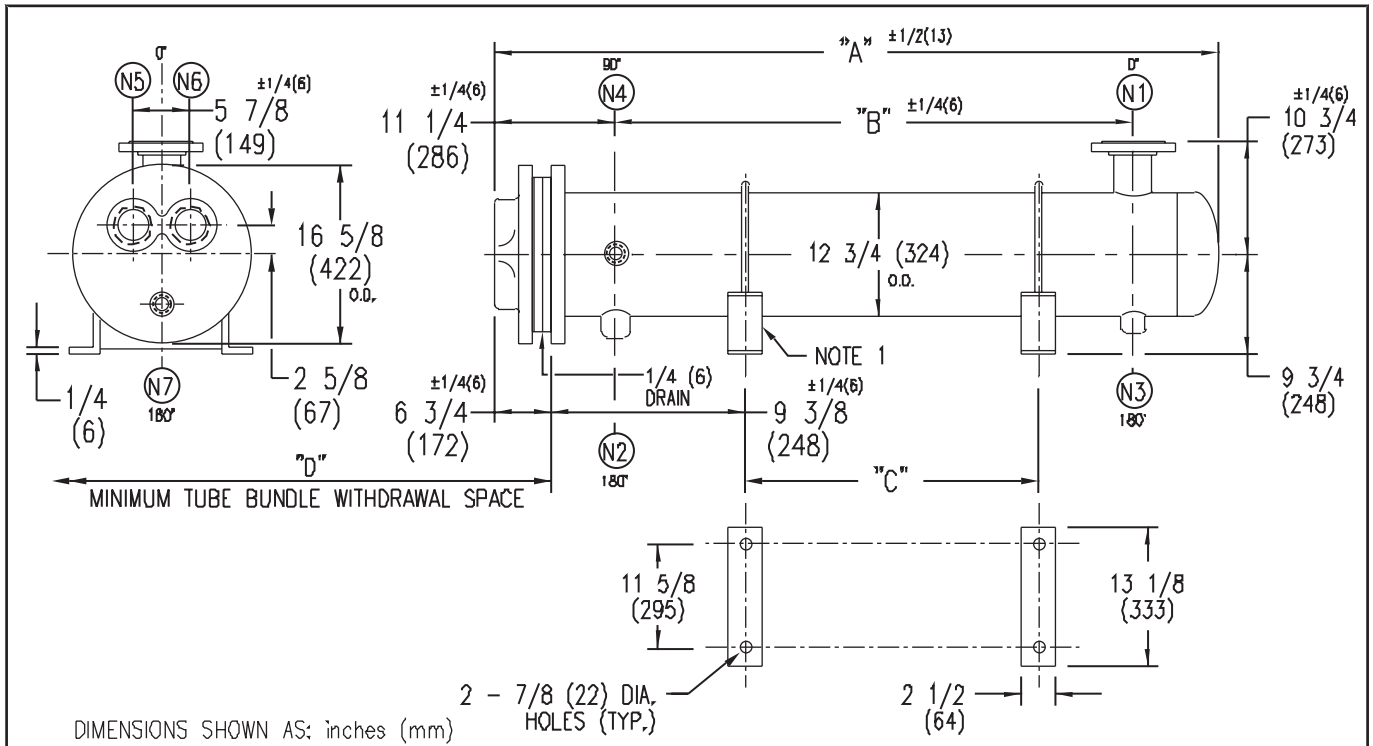


ARMSTRONG®



EXCHANGER SIZE	DIMENSIONS											
	A		B		C		D		(N1)		(N2)	
	inches	mm	inches	mm	inches	mm	inches	mm	inches	mm	inches	mm
WSX-123-4E1	57 1/2	1461	37	940	26	660	40	1016	6	152	2	51
WSX-124-4E1	69 1/2	1765	49	1245	38	965	52	1321	6	152	2	51
WSX-125-4E1	81 1/2	2070	61	1549	50	1270	64	1626	6	152	2	51
WSX-126-4E1	93 1/2	2375	73	1854	62	1575	76	1930	6	152	2	51
WSX-127-4E1	105 1/2	2680	85	2159	74	1880	88	2235	8	203	2 1/2	64
WSX-128-4E1	117 1/2	2985	97	2464	86	2184	100	2540	8	203	2 1/2	64
WSX-129-4E1	129 1/2	3289	109	2769	98	2489	112	2845	8	203	2 1/2	64
WSX-1210-4E1	141 1/2	3594	121	3073	110	2794	124	3150	8	203	2 1/2	64
WSX-1211-4E1	153 1/2	3899	133	3378	122	3099	136	3454	8	203	2 1/2	64
WSX-1212-4E1	165 1/2	4204	145	3683	134	3404	148	3759	8	203	2 1/2	64
WSX-1213-4E1	177 1/2	4509	157	3988	146	3708	160	4064	8	203	2 1/2	64
WSX-1214-4E1	189 1/2	4813	169	4293	158	4013	172	4369	8	203	2 1/2	64
WSX-1215-4E1	201 1/2	5118	181	4597	170	4318	184	4674	8	203	2 1/2	64

NOZZLE SCHEDULE				
SERVICE	MARK	SHELL SIDE	MARK	TUBE SIDE
INLET	(N1)	AS PER TABLE	(N5)	4 (102) NPT
OUTLET	(N2)	AS PER TABLE	(N6)	4 (102) NPT
DRAIN	(N3)	1/2 (13) NPT	(N7)	1/2 (13) NPT
VENT	(N4)	3/4 (19) NPT		

NOTES: 1. SUPPORTS SUPPLIED ONLY IF SPECIFIED ON ORDER.
 2. NOZZLE SIZES SHOWN ARE RECOMMENDED FOR MAX. EXCHANGER LIFE, NO EXTERNAL FORCES APPLY.
 3. FABRICATED TO ASME CODE SECTION VIII DIVISION 1 AND LATEST ADDENDA.
 4. DRAWING IS NOT TO SCALE.
 5. ALL DIM'S ±1/8 (3) UNLESS OTHERWISE SHOWN.

DESIGN CONDITIONS				
	SHELL		TUBES	
DESIGN PRESSURE	150 PSIG	1034 KPa	125 PSIG	862 KPa
DESIGN TEMPERATURE	375 °F	191 °C	375 °F	191 °C
MIN. DESIGN METAL TEMP.	35 °F	1.7 °C	35 °F	1.7 °C
HYDRO. TEST PRESSURE	225 PSIG	1551 KPa	250 PSIG	1723 KPa
CONTENTS	STEAM		WATER	

CUSTOMER:
 LOCATION:
 ENGINEER:
 ORDER No.:
 PROJECT/JOB:
 LOCATION:
 TAG: (QUOTE #)

TITLE G.A. 150 LB. WSX SERIES HEAT EXCHANGERS	A R M S T R O N G				NUMBER WSX-12-4P-E1	REV. A 2001 J.R.
DATE: 12/01/94 BY: D.C.R.	TORONTO - CANADA TEL: (416) 755-2291	MONTREAL - CANADA TEL: (514) 421-2424	BUFFALO - N. Y. TEL: (716) 893-8813	COLCHESTER - U.K. TEL: (44) 120-657-9491		