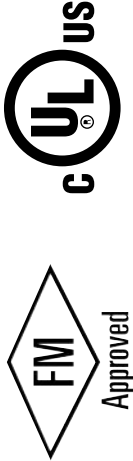


## 5000 gpm with 14 x 24 1/2 Fabricated Steel Head

## SUBMITTAL

VERTICAL TURBINE ELECTRIC  
FIRE PUMP



5000 G.P.M. T.D.H. \_\_\_\_\_  
 FM  UL  NFPA-20 ONLY  
 APPROVAL  CONSTRUCTION

MODEL 14x19H VTF

14 x 24 1/2 "F" DISCHARGE HEAD  
1770 R.P.M. WATER LUBE

MOTOR \_\_\_\_\_ HP \_\_\_\_\_  
 VOLT \_\_\_\_\_ PH \_\_\_\_\_ HZ \_\_\_\_\_  
 CONTROLLER MODEL \_\_\_\_\_

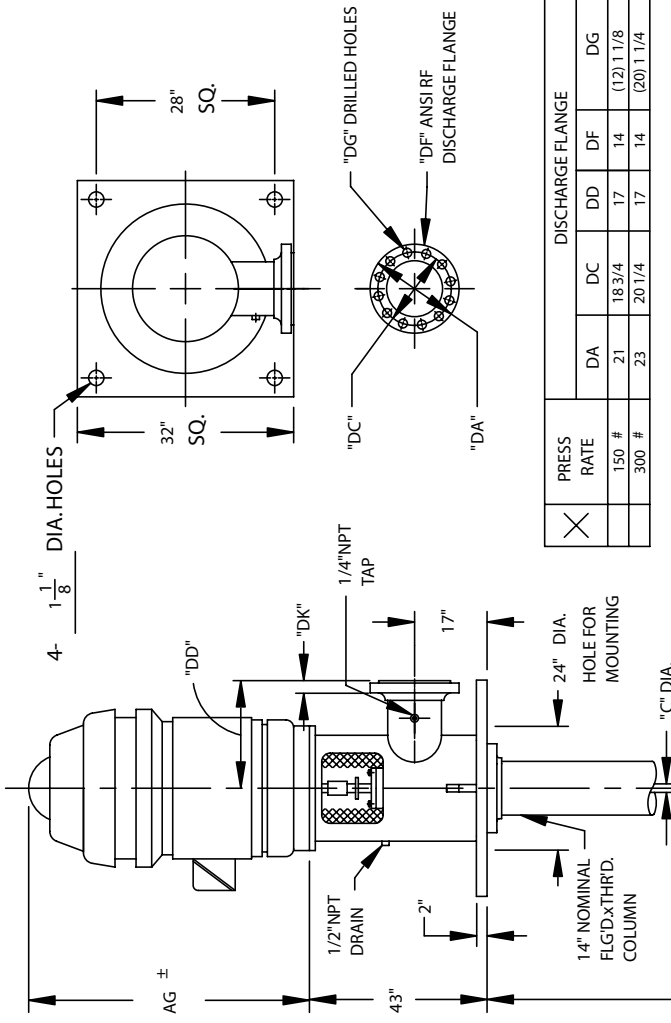
JOB NAME: \_\_\_\_\_  
 ITEM NO. \_\_\_\_\_

CUSTOMER \_\_\_\_\_

ORDER NO. \_\_\_\_\_  
 MFG. REP. \_\_\_\_\_

DWG. NO. \_\_\_\_\_  
 SERIAL NO. \_\_\_\_\_

NOT TO BE USED  
FOR CONSTRUCTION  
UNLESS CERTIFIED  
 By: \_\_\_\_\_ Date: \_\_\_\_\_



PRESS RATE	DISCHARGE FLANGE					
	DA	DC	DD	DF	DG	DK
150 #	21	18 3/4	17	14	(12) 1 1/8	13/8
300 #	23	20 1/4	17	14	(20) 1 1/4	2 1/8

NO. OF STGS.	DISCH. SIZE & RATING	AG	B		C
			B	C	
1	14/150#	51	35 5/8	1 11/16	
2	14/150#	66 5/16	51 3/4	2 1/4	
3	14/150#	74 5/16	67 7/8	2 1/4	
4	14/150#	83 5/16	67 7/8	2 1/4	
	14/200#	83 5/16	84	2 1/4	

**NOTES :**

- 1 DIMENSION BASED ON MOTOR HEIGHT OF A STANDARD WP-HOLLOW SHAFT MOTOR. SUBJECT TO CHANGE DEPENDING ON MOTOR MFG. AND/OR THE USE OF A MOTOR ADAPTOR.
- 2 DIMENSIONS ARE IN INCHES UNLESS OTHERWISE INDICATED.
- 3 WHEN MOTOR IS OIL LUBRICATED, OIL IS NOT FURNISHED. SEE OPERATION MANUAL FOR MANUFACTURER'S RECOMMENDATIONS.