

## 4500 gpm with 14 x 24 1/2 Fabricated Steel Head

## SUBMITTAL

VERTICAL TURBINE ELECTRIC  
FIRE PUMP



4500 G.P.M. T.D.H. \_\_\_\_\_  
 FM  UL  NFPA-20 ONLY  
 APPROVAL  CONSTRUCTION

MODEL 14x19H VTF  
 14 x 24 1/2 "F" DISCHARGE HEAD  
 1770 R.P.M. WATER LUBE

MOTOR \_\_\_\_\_ HP \_\_\_\_\_  
 VOLT \_\_\_\_\_ PH \_\_\_\_\_ HZ \_\_\_\_\_  
 CONTROLLER MODEL \_\_\_\_\_

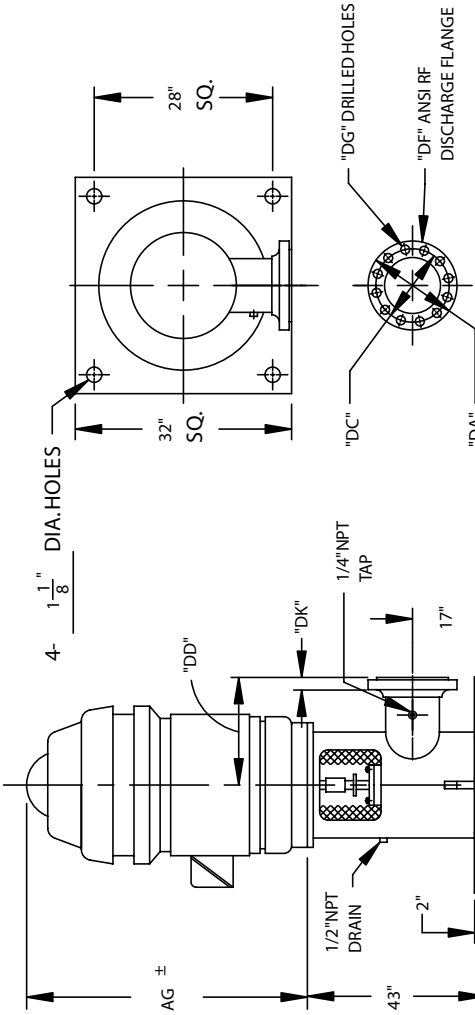
JOB NAME: \_\_\_\_\_  
 ITEM NO. \_\_\_\_\_

CUSTOMER \_\_\_\_\_

ORDER NO. \_\_\_\_\_  
 MFG. REP. \_\_\_\_\_

DWG. NO. \_\_\_\_\_  
 SERIAL NO. \_\_\_\_\_

NOT TO BE USED FOR CONSTRUCTION UNLESS CERTIFIED  
 By: \_\_\_\_\_ Date: \_\_\_\_\_



PRESS RATE	DISCHARGE FLANGE					
	DA	DC	DD	DF	DG	DK
150 #	21	18 3/4	17	14	(12) 1 1/8	1 3/8
300 #	23	20 1/4	17	14	(20) 1 1/4	2 1/8

NO. OF STG'S.	DISCH. SIZE & RATING	AG		
		B	C	
1	14/150#	51	35 5/8	1 11/16
3	14/150#	74 5/16	67 7/8	2 1/4
3	14/150#	83 5/16	67 7/8	2 1/4
4	14/300#	83 5/16	84	2 1/4

NOTES:

- 1 DIMENSION BASED ON MOTOR HEIGHT OF A STANDARD WP-I HOLLOW SHAFT MOTOR. SUBJECT TO CHANGE DEPENDING ON MOTOR MFG. AND/OR THE USE OF A MOTOR ADAPTOR.
- 2 DIMENSIONS ARE IN INCHES UNLESS OTHERWISE INDICATED.
- 3 WHEN MOTOR IS OIL LUBRICATED OIL IS NOT FURNISHED. SEE OPERATION MANUAL FOR MANUFACTURER'S RECOMMENDATIONS.