

AG3 CIRCULATOR | SINGLE-HEAD MULTI SPEED | 40-70Z | SUBMITTAL

File No: 10.85161EC
Date: MAY 10, 2017
Supersedes: NEW
Date: NEW

Job: _____ Representative: _____
 _____ Ordered by: _____ Date: _____
 Engineer: _____ Submitted by: _____ Date: _____
 Contractor: _____ Approved by: _____ Date: _____

PUMP DETAILS

| TAG | MODEL | FLOW | HEAD | SYSTEM | LOCATION |
|-----|-------|------|------|--------|----------|
| | | | | | |
| | | | | | |

MOTOR DESIGN DATA

Motor enclosure: IP44
Power supply: 400/3/50
Insulation class: Class 200
Motor efficiency: $EEI \leq 0.22$
Inverter/motor type: Asynchronous motor
Motor speed: Multi speed

ELECTRICAL DATA

| 1x230,50HZ, IEC38 | P1[W] | I [AMPS] |
|-------------------|-------|----------|
| Auto min. | 100 | 0.18 |
| Auto max. | 295 | 0.74 |

ELECTRICAL CONNECTION

Type: 4 wires (L1, L2,L3,Earth)
Connector: 4 pins connector & cable gland

MATERIALS OF CONSTRUCTION

Impeller: Noryl
Casing gasket: EPDM 70 Shore
Bearings: Grafit/Ceramics
Pump casing: Bronze
Shaft: Stainless steel/Ceramics
Can: Stainless steel

MECHANICAL CONNECTION

Type: Flanged
Pressure rating: PN10
Size: DN40

ENVIRONMENT LIMIT DATA

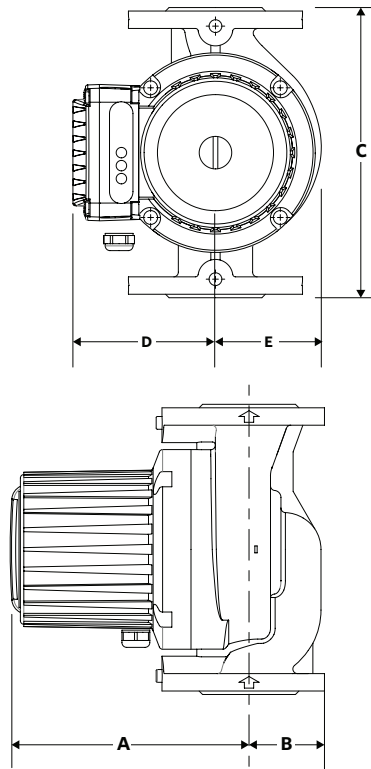
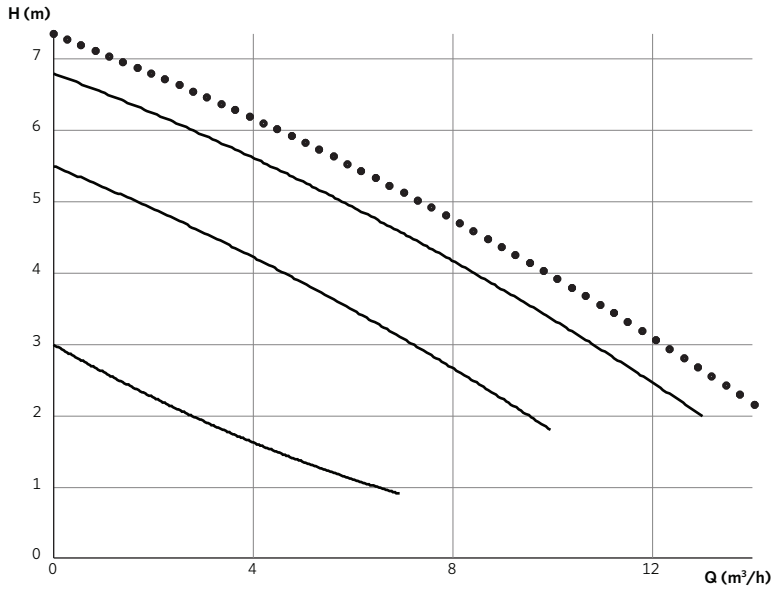
Water temp max: 110°C
Water temp min : 2°C
Ambient temp. max: 40°C
Min. pressure: 0.05 BAR < 75°C,
 0.28 BAR < 90°C

SUBMITTAL AG3
40-70Z circulator

2

DIMENSIONS

| A | B | C | D | E | WEIGHT |
|-------------|----------|-----------|-----------|----------|-------------|
| mm (inches) | | | | | kg (lbs) |
| 198 (7.8) | 65 (2.5) | 250 (9.8) | 125 (4.9) | 92 (3.6) | 22.0 (48.5) |



TORONTO
+1 416 755 2291

BUFFALO
+1 716 693 8813

BIRMINGHAM
+44 (0) 8444 145 145

MANCHESTER
+44 (0) 8444 145 145

BANGALORE
+91 (0) 80 4906 3555

SHANGHAI
+86 21 3756 6696

SÃO PAULO
+55 11 4781 5500

ARMSTRONG FLUID TECHNOLOGY
ESTABLISHED 1934

ARMSTRONGFLUIDTECHNOLOGY.COM