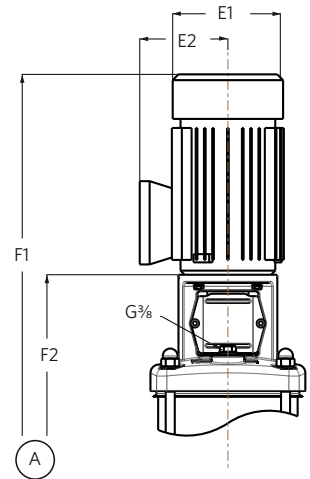


Vertical Multistage Pumps VMS(C/S) 25 B - 50Hz - 2 pole - DIN SUBMITTAL

JOB: _____	REPRESENTATIVE: _____
_____	_____
ENGINEER: _____	ORDER NO: _____ DATE: _____
CONTRACTOR: _____	SUBMITTED BY: _____ DATE: _____
_____	APPROVED BY: _____ DATE: _____

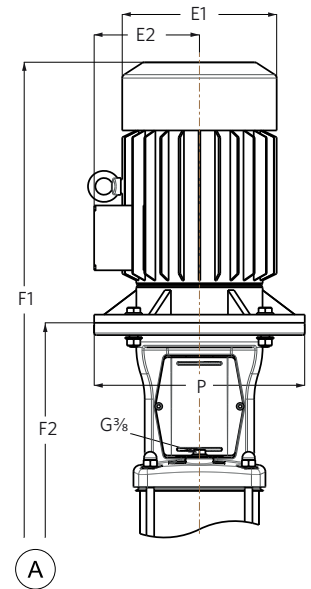
Coupled motor Construction type; V18

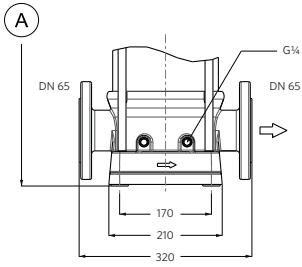
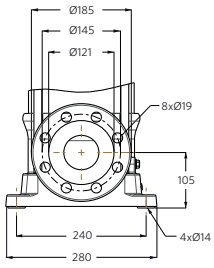
CONNECTION	MIN. PRESSURE CLASS OPTIONS	MOTOR DIMENSIONS				VMS(C/S)F		UNIT WEIGHT
		MODEL	kW	E1	E2	P	F1	
25/1	PN10	2.2	176	141		693	408	70
25/2		4	223	167		818	478	85



Coupled motor Construction type; V1

CONNECTION	MIN. PRESSURE CLASS OPTIONS	MOTOR DIMENSIONS				VMS(C/S)F		UNIT WEIGHT
		MODEL	kW	E1	E2	P	F1	
25/3	PN10	5.5	266	178	300	999	634	114
25/4		7.5	266	178	300	1064	699	121
25/5	PN16	11	315	204	350	1292	794	203
25/6		11	315	204	350	1357	859	206
25/7		15	315	204	350	1422	924	218
25/8	PN25	15	315	204	350	1487	989	231
25/9		15	315	204	350	1552	1054	233
25/10		18.5	315	204	350	1699	1119	253
25/11		18.5	315	204	350	1764	1184	256
25/12		22	350	223	350	1829	1249	294



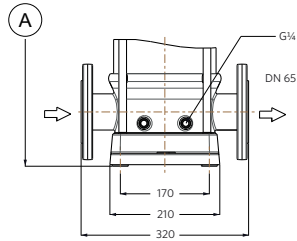
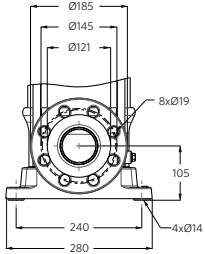


VMS C F Cast Iron Flange

Norm: EN 1092-1/1092-2

Size: NW65

Pressure Class: PN40



VMS (S) F Loose plate flange

Cataphoric coated loose plate flange

Norm: EN 1092-1/1092-2

Size: NW65

Pressure Class: PN40

Option: Loose plate flange (PN25) in SS 1.4308

ARMSTRONG FLUID TECHNOLOGY

Wenlock Way
Manchester
United Kingdom, M12 5JL
T: +44 (0) 8444 145 145
F: +44 (0) 8444 145 146

S. A. ARMSTRONG LIMITED

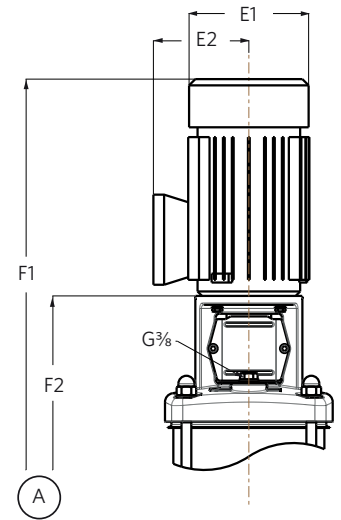
23 Bertrand Avenue
Toronto, Ontario
Canada, M1L 2P3
T: 416 755 2291
F: 416 759 9101

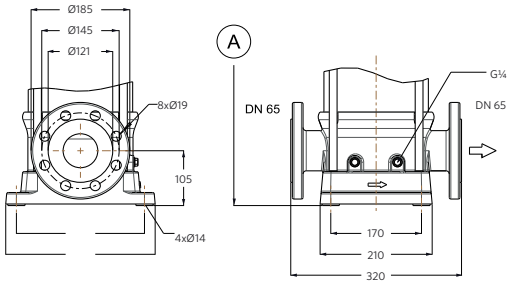
Vertical Multistage Pumps VMS(C/S) 25 B - 50Hz - 4 pole - DIN SUBMITTAL

JOB: _____	REPRESENTATIVE: _____
_____	_____
ENGINEER: _____	ORDER NO: _____ DATE: _____
CONTRACTOR: _____	SUBMITTED BY: _____ DATE: _____
	APPROVED BY: _____ DATE: _____

Coupled motor Construction type; V18

CONNECTION	MIN. PRESSURE CLASS OPTIONS	MOTOR DIMENSIONS				VMS(C/S)F		UNIT WEIGHT
MODEL		kW	E1	E2		F1	F1	KG
25/1	PN10	1.1	176	141		678	408	66
25/2		1.1	176	141		743	473	69
25/3		1.1	176	141		808	538	71
25/4		1.1	176	141		873	603	74
25/5		1.1	176	141		938	668	78
25/6		1.5	195	145		1018	733	83
25/7		1.5	195	145		1083	798	85
25/8		2.2	195	145		1198	868	98
25/9		2.2	195	145		1263	933	101
25/10		2.2	195	145		1328	998	103
25/11		2.2	195	145		1393	1063	107
25/12		3	195	145		1458	1128	109



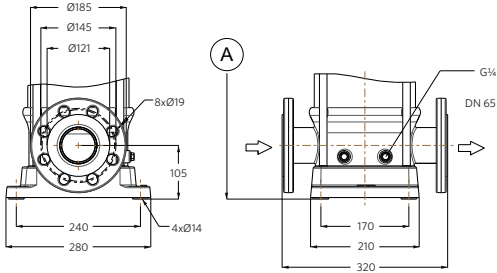


VMS C F Cast Iron Flange

Norm: EN 1092-1/1092-2

Size: NW65

Pressure Class: PN40



VMS (S) F Loose plate flange

Cataphoric coated loose plate flange

Norm: EN 1092-1/1092-2

Size: NW65

Pressure Class: PN40

Option: Loose plate flange (PN25) in SS 1.4308

ARMSTRONG FLUID TECHNOLOGY

Wenlock Way
Manchester
United Kingdom, M12 5JL
T: +44 (0) 8444 145 145
F: +44 (0) 8444 145 146

S. A. ARMSTRONG LIMITED

23 Bertrand Avenue
Toronto, Ontario
Canada, M1L 2P3
T: 416 755 2291
F: 416 759 9101