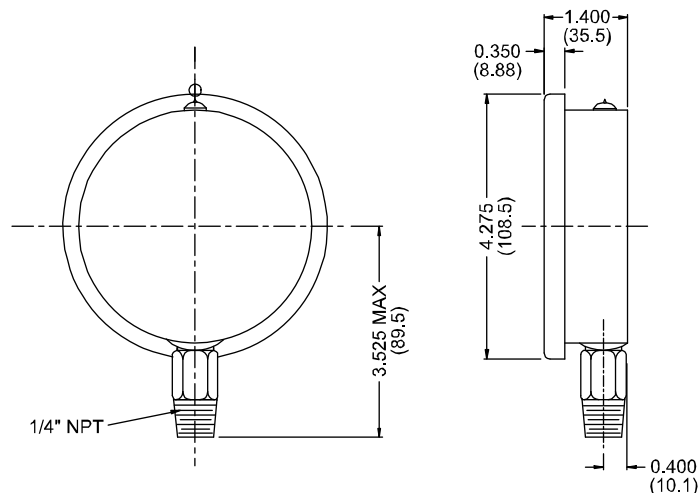


## PRESSURE GAUGES



### MATERIALS OF CONSTRUCTION

Dial	Aluminum (White with black and red markings)
Case	AISI 304 stainless steel
Lens	Polycarbonate
Ring	AISI 304 stainless steel, Crimp-On
Pointer	Aluminum, anodized black
Socket	OT 58 Brass
Connection	1/4 " NPT standard with restricted orifice
Bourdon Tube	1.5"( 40 mm) -Brass C- Shaped
Movement	OT 59 brass
Gasket Materials	Silicone rubber for socket; EPDM for lens, filling plug and blow-out vent.
Fill Liquid	Glycerin (98.5% food grade)
Enclosure Rating	4" (100mm) - IP65 per UEC 529, UNI 8896
Welding	Brass
Over-pressure Limit	25%
Working Pressure	Maximum 75% of full scale value
Ambient Temperature	-14°F/150°F (-25°C to 165°C)
Process Temperature	-14°F/150°F (-25°C to 165°C)
Accuracy	4" (100mm): ± 1.5% (ANSI/ASME Grade B)

### FEATURES

Glycerin filled
Brass & Stainless Steel internals
Dual scale (PSI/KPA)
CRN Registered

### RANGE (PSI)

<input type="checkbox"/> 0 - 100
<input type="checkbox"/> 0 - 200
<input type="checkbox"/> 0 - 300
<input type="checkbox"/> 0 - 400

S. A. Armstrong Limited  
 23 Bertrand Avenue  
 Toronto, Ontario  
 Canada, M1L 2P3  
 T: 416-755-2291  
 F: 416-759-9101

Armstrong Pumps Inc.  
 93 East Avenue  
 North Tonawanda, New York  
 U.S.A. 14120-6594  
 T: 716-693-8813  
 F: 716-693-8970

Armstrong Integrated Limited  
 Wenlock Way  
 Manchester  
 United Kingdom, M12 5JL  
 T: +44 (0) 8444 145 145  
 F: +44 (0) 8444 145 146

