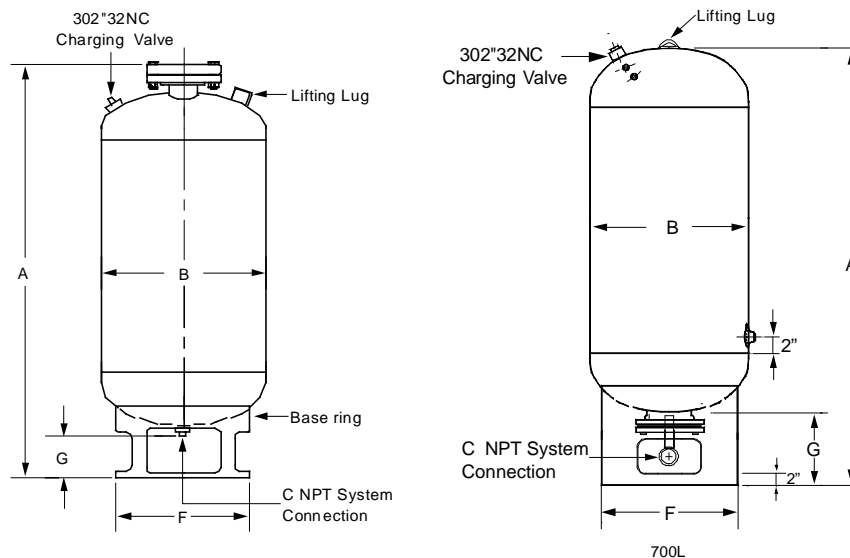


## ASME DRAWDOWN TANKS

## SUBMITTAL



### Applications

Booster systems or other potable water applications.

### Features

- FDA approved, NSF listed bladder material
- Full volume flexible Elastomer Bag
- Bag easily replaceable
- Water and air separation eliminates corrosion
- Tank bottom system connection

Model	Tank Size US gallons (L)	Dimensions - inches (mm)					Weight lbs (kg)	Max WP psig (bar)	Max WT °F (°C)
		A	B	C	F	G			
400L	106 (401)	49.00 (1245)	30.00 (762)	1.50 (38)	24.00 (610)	5.50 (140)	300 (136.1)	125 (8.6)	240 (115.6)
500L	132 (500)	57.00 (1448)	30.00 (762)	2.00 (51)	24.00 (610)	4.75 (121)	330 (149.7)	125 (8.6)	240 (115.6)
600L	158 (598)	65.00 (1651)	30.00 (762)	2.00 (51)	24.00 (610)	4.75 (121)	360 (163.3)	125 (8.6)	240 (115.6)
700L	185 (700)	80.00 (2032)	30.00 (762)	1.50 (38)	24.00 (610)	13.00 (330)	600 (272.2)	200 (13.8)	175 (79.4)
800L	211 (799)	76.00 (1930)	32.00 (813)	2.00 (51)	26.00 (660)	4.75 (121)	475 (215.5)	125 (8.6)	240 (115.6)

Note: All dimensions are subject to change without notice.

Specifications	
Type Design And Construction	ASME Sect. VIII
Finish	Gray primer
Factory Precharge	30 psi adjustable in field

For Vertical Installation Only

S. A. Armstrong Limited  
23 Bertrand Avenue  
Toronto, Ontario  
Canada, M1L 2P3  
T: (416) 755-2291  
F (Main): (416) 759-9101

Armstrong Pumps Inc.  
93 East Avenue  
North Tonawanda, New York  
U.S.A. 14120-6594  
T: (716) 693-8813  
F: (716) 693-8970

Armstrong Holden Brooke Pullen  
Wenlock Way  
Manchester  
United Kingdom, M12 5JL  
T: +44 (0) 161 223 2223  
F: +44 (0) 161 220 9660



© S.A. Armstrong Limited 2010