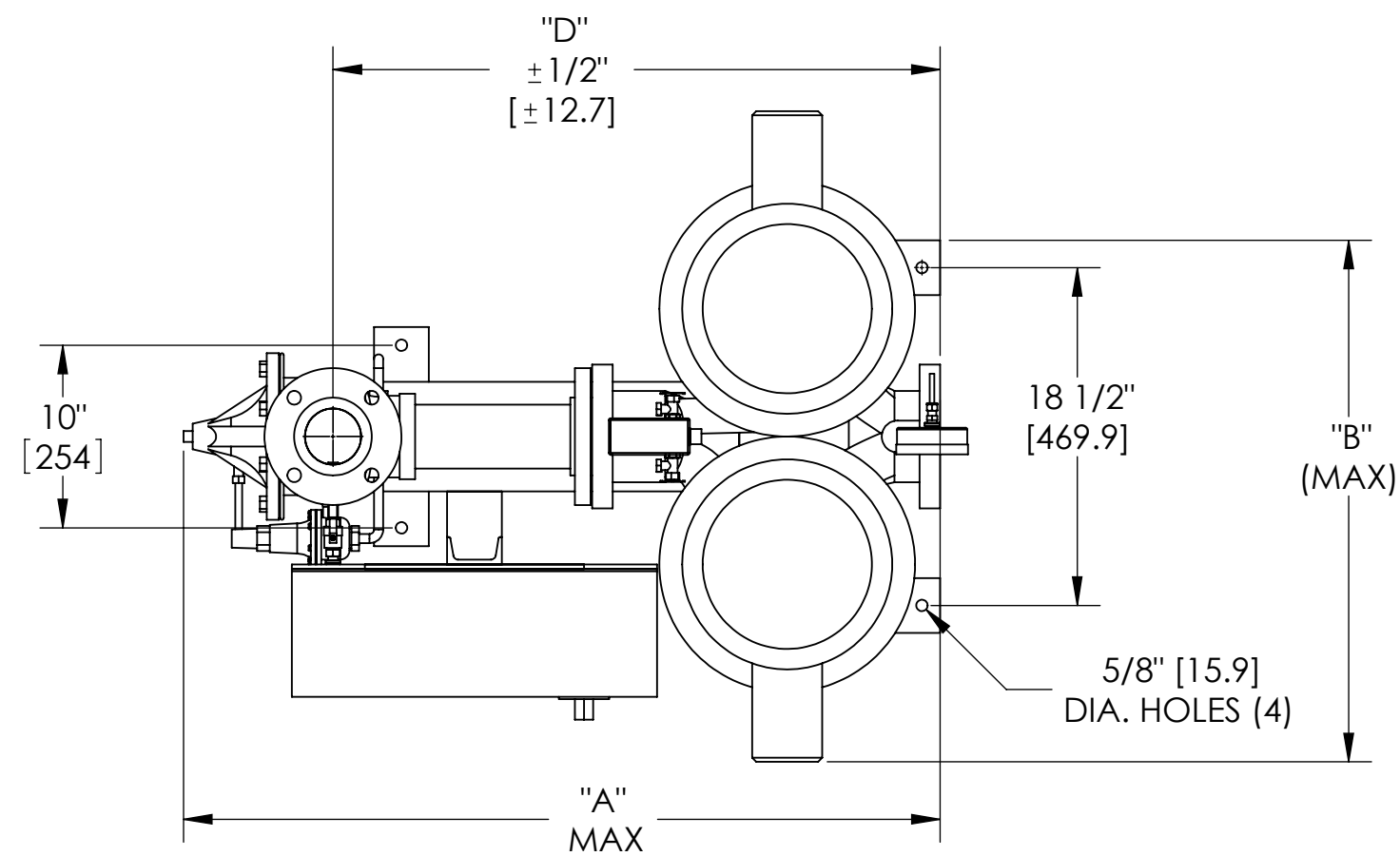


REVISIONS				
ZONE	REV.	DESCRIPTION	DATE	APPROVED
	E	REDRAWN WITH CHANGES. SEE E.O. #105680	2013/4/5	

FILE NO.: 62.5245
DATE: May 10, 2013
SUPERSEDES: 62.5245
DATE: May 07, 2011



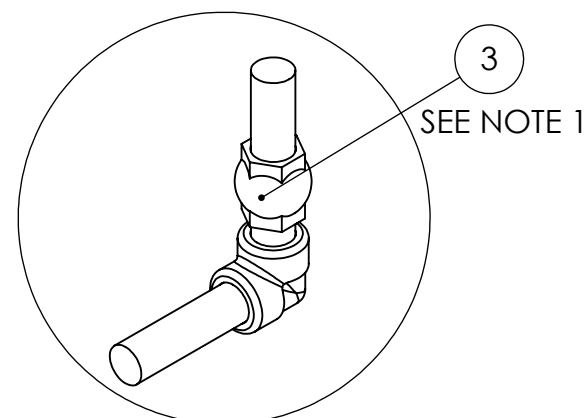
NOTES:

- 1- Item ② (PRV) is standard for constant speed packages.
- 2 - Dimensions are based on factory choice standard components. For other than standard consult factory, as a new drawing may be required.
- 3 - All dimensions are in inches [Metric].
- 4 - Tolerances are +/- 1/4" [6.35] unless otherwise specified.
- 5 - Drawings are for layout purposes only.

Maximum System Pressure: 175 PSI 250 PSI

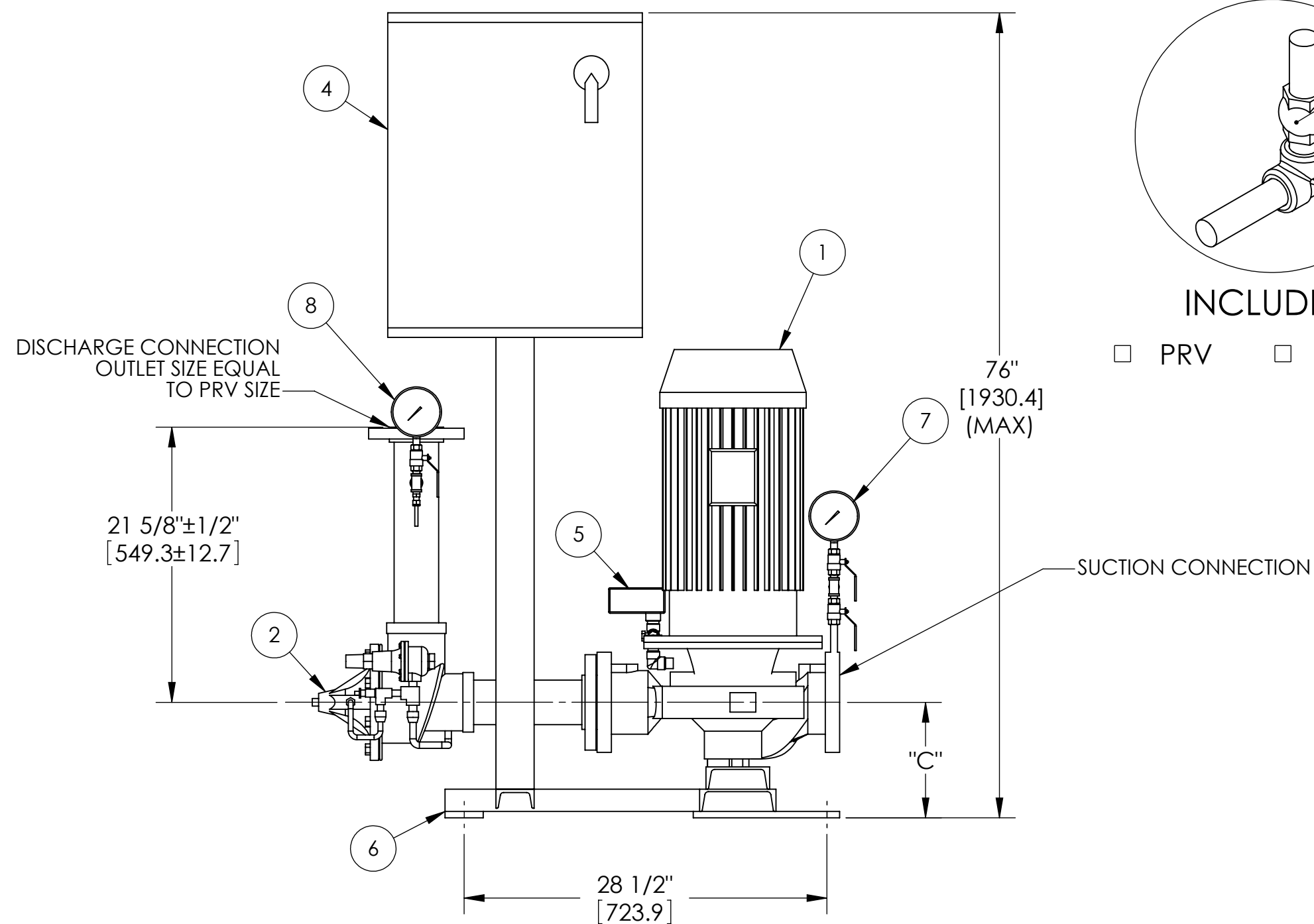
INLET ORIENTATION

RIGHT HAND - STD. AS SHOWN LEFT HAND



INCLUDED

PRV CHECK VALVE



DIMENSIONS				
DUALPAK	A	B	C	D
6901-3x3x6	40.00 [1016.00]	30.00 [762.00]	9.25 [234.95]	32.50 [825.50]
6902-3x3x8	41.00 [1041.40]	30.00 [762.00]	9.50 [241.30]	33.25 [844.55]
6903-3x3x6	40.00 [1016.00]	30.00 [762.00]	9.25 [234.95]	32.50 [825.50]
6904-3x3x8	41.00 [1041.40]	30.00 [762.00]	9.50 [241.30]	33.25 [844.55]

1	DUALARM PUMP & MOTORS	5	AQUASTAT
2	MAIN PRV	6	BASE & PANEL SUPPORT
3	CHECK VALVE	7	SUCTION GAUGE
4	DUAL PUMP CONTROLLER	8	DISCHARGE GAUGE

DO NOT SCALE

PROPRIETARY AND CONFIDENTIAL
THE INFORMATION CONTAINED IN THIS DRAWING IS THE SOLE PROPERTY OF S.A. ARMSTRONG. ANY REPRODUCTION IN PART OR AS A WHOLE WITHOUT THE WRITTEN PERMISSION OF S.A. ARMSTRONG IS PROHIBITED.



UNLESS OTHERWISE SPECIFIED:		NAME	DATE
DIMENSIONS ARE IN INCHES WEIGHT IN POUNDS	DRAWN	SP	11/29/03
TOLERANCES: FRACTIONAL ±1/4 ANGULAR: MACH ±0.5° BEND ±0.5° TWO PLACE DECIMAL ±0.25 THREE PLACE DECIMAL ±0.020	CHECKED	PR	2013/4/10
DIMENSIONING AND TOLERANCING PER: ASME Y14.5-1994	Q.A.	BB	2013/4/10
MATERIAL	MFG APPR.	GL	2013/4/10
	ENG APPR.	JC	2013/4/10
	COMMENTS:		
NEXT ASSY	USED ON	FINISH	
APPLICATION	DESIGN AUTHORITY: S.A. ARMSTRONG		

ARMSTRONG

TITLE: **6901/2/3/4 DUALPAK DWB**

SCALE: NTS DWG. NO. 2446-000 REV E

SCALE: NTS WEIGHT: SHEET 1 OF 1