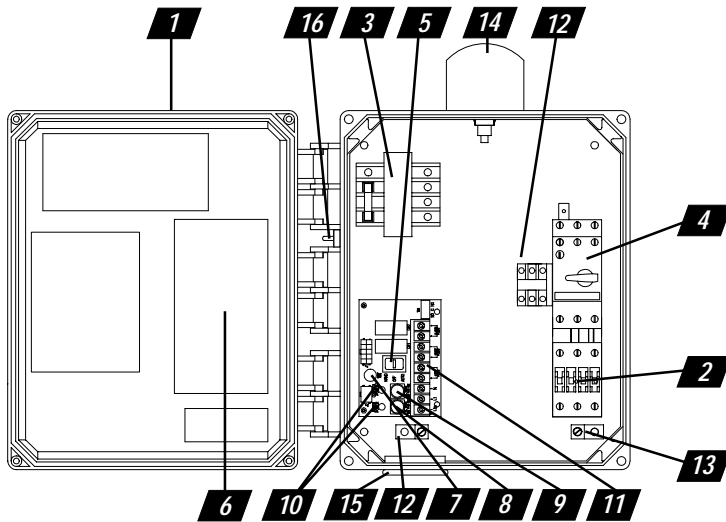


| | |
|-------------------|---------------------------------|
| Job: _____ | Representative: _____ |
| _____ | _____ |
| _____ | Order By: _____ Date: _____ |
| Engineer: _____ | Submitted By: _____ Date: _____ |
| Contractor: _____ | Approved By: _____ Date: _____ |

Three phase, simplex contactor control.

The Model 312 control panel provides industrial and commercial customers with a reliable means of controlling one three phase pump in water and sewage installations. Two control switches activate a IEC motor contactor to turn the pump on and off. If an alarm condition occurs, an additional alarm switch activates the audio/visual alarm system. Common applications include pump chambers, irrigation systems, and lift stations.



1. **Enclosure** measures 12 x 10 x 6 inches (30.48 x 25.40 x 15.24 cm). NEMA 4X (ultraviolet stabilized thermoplastic with removable flanges for outdoor or indoor use).
2. **IEC Motor Contactor** controls pumps by switching electrical lines.
3. **Multi-Tap Transformer** provides 120V control voltage.
4. **Motor Protective Switch** provides adjustable overload, branch circuit protection and pump disconnect.
5. **HOA Switch** for manual pump control (mounted on circuit board).
6. **Schematic/Wiring Diagram**
7. **Green Pump Run Indicator Light** mounted on circuit board.
8. **Alarm Fuse** (mounted on circuit board).
9. **Control Fuse** (mounted on circuit board).
10. **Alarm and Control Power Indicators** (mounted on circuit board).
11. **Float Switch Terminal Block** (mounted on circuit board).
12. **Input Power Terminal Block**
13. **Ground Lug**

STANDARD ALARM PACKAGE

14. **Red Alarm Beacon** provides 360° visual check of alarm condition.
15. **Alarm Horn** provides audio warning of alarm condition (83 to 85 decibel rating).
16. **Exterior Alarm Test/Normal/Silence Switch** allows horn and light to be tested or horn to be silenced in an alarm condition. Horn automatically resets once alarm condition is cleared.

FEATURES

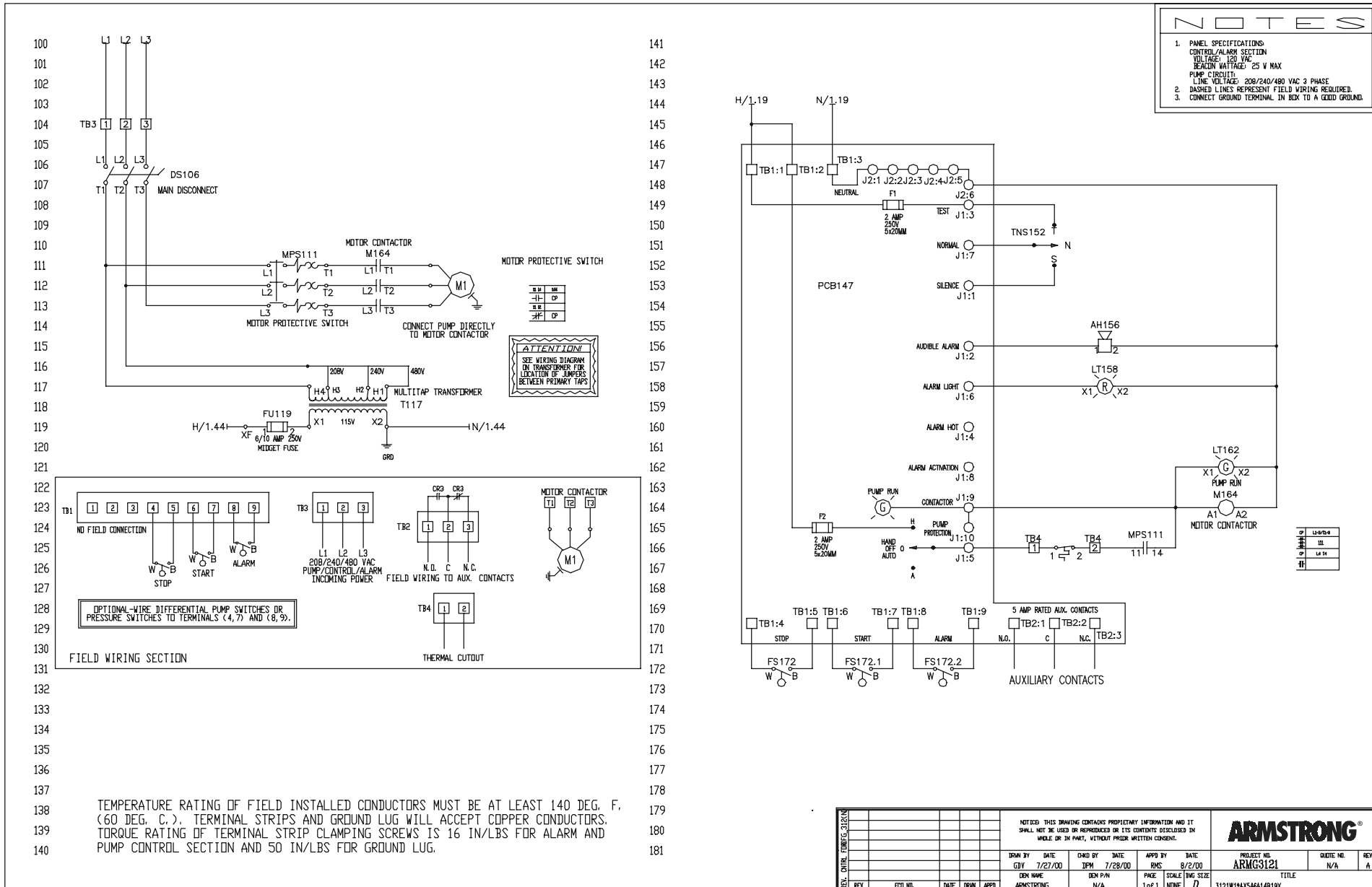
- Entire control system (panel and switches) is UL Listed to meet and/or exceed industry safety standards
- Dual safety certification for the United States and Canada
- Complete with step-by-step installation instructions
- Three-year limited warranty
- Thermal cutout/heat sensor auto reset (for pumps with thermal switch leads)
- Auxiliary alarm contact, form C type
- Main disconnect - non-fused rotary style, mounted through door.
- Door mounted pump run indicator



OPTIONS

- 3A Alarm flasher
- ★ 4A Low level cutout - requires float.
- ★ 4B Red low-level indicator & alarm
must select 4A
- ★ 5E Seal failure circuit & red indicator (2 wire)
- 8A Elapsed time meter
- ★ 8C Event (cycle) counter
- 10A Clear inner swing-out door w/dead front (components mounted on inner door)
- 10E Lockable latch
- 10G Lightning arrester
- 10K Anti-condensation heater

THREE PHASE - SIMPLEX MODEL 312



TEMPERATURE RATING OF FIELD INSTALLED CONDUCTORS MUST BE AT LEAST 140 DEG. F. (60 DEG. C.). TERMINAL STRIPS AND GROUND LUG WILL ACCEPT COPPER CONDUCTORS. TORQUE RATING OF TERMINAL STRIP CLAMPING SCREWS IS 16 IN/LBS FOR ALARM AND PUMP CONTROL SECTION AND 50 IN/LBS FOR GROUND LUG.

| | | | | | |
|---------------------------------------------------------------------------------------------------------------------------------------------------------------------------|------------|------------|------------------|-------------|--------|
| NOTED: THIS DRAWING CONTAINS PROPRIETARY INFORMATION AND IT SHALL NOT BE USED OR REPRODUCED OR ITS CONTENTS DISCLOSED IN WHOLE OR IN PART, WITHOUT PRIOR WRITTEN CONSENT. | | | ARMSTRONG | | |
| DESIGNED BY | DATE | CHECKED BY | DATE | APPROVED BY | DATE |
| GJY | 7/27/00 | IPM | 7/28/00 | BMS | 8/2/00 |
| DESIGN NAME | DESIGN P/N | PACKAGE | SCALE | DWG. SIZE | |
| ARMSTRONG | N/A | 1 of 1 | NONE | D | |
| PROJECT NO. | REVISE NO. | KEY: | | | |
| ARMG3121 | N/A | A | | | |
| 3121W14X5A6A14B19X | | | | | |

S.A. Armstrong Limited
23 Bertrand Avenue
Toronto, Ontario
Canada, M1L 2P3
Tel: (416) 755-2291
Fax: (416) 759-9101
Visit us at www.armstrongpumps.com

Armstrong Pumps Limited
Peartree Road, Stanway
Colchester, Essex
United Kingdom, C03 5JX
Tel: 01206-579491
Fax: 01206-760532



© S.A. Armstrong Limited 2000

Armstrong Pumps Inc.
93 East Avenue
Buffalo, New York
U.S.A. 14120-6594
Tel: (716) 693-8813
Fax: (716) 693-8970

Armstrong Darling Inc.
2200 Place Transcanadienne
Montreal, Quebec
Canada, H9P 2X5
Tel: (514) 421-2424
Fax: (514) 421-2436

