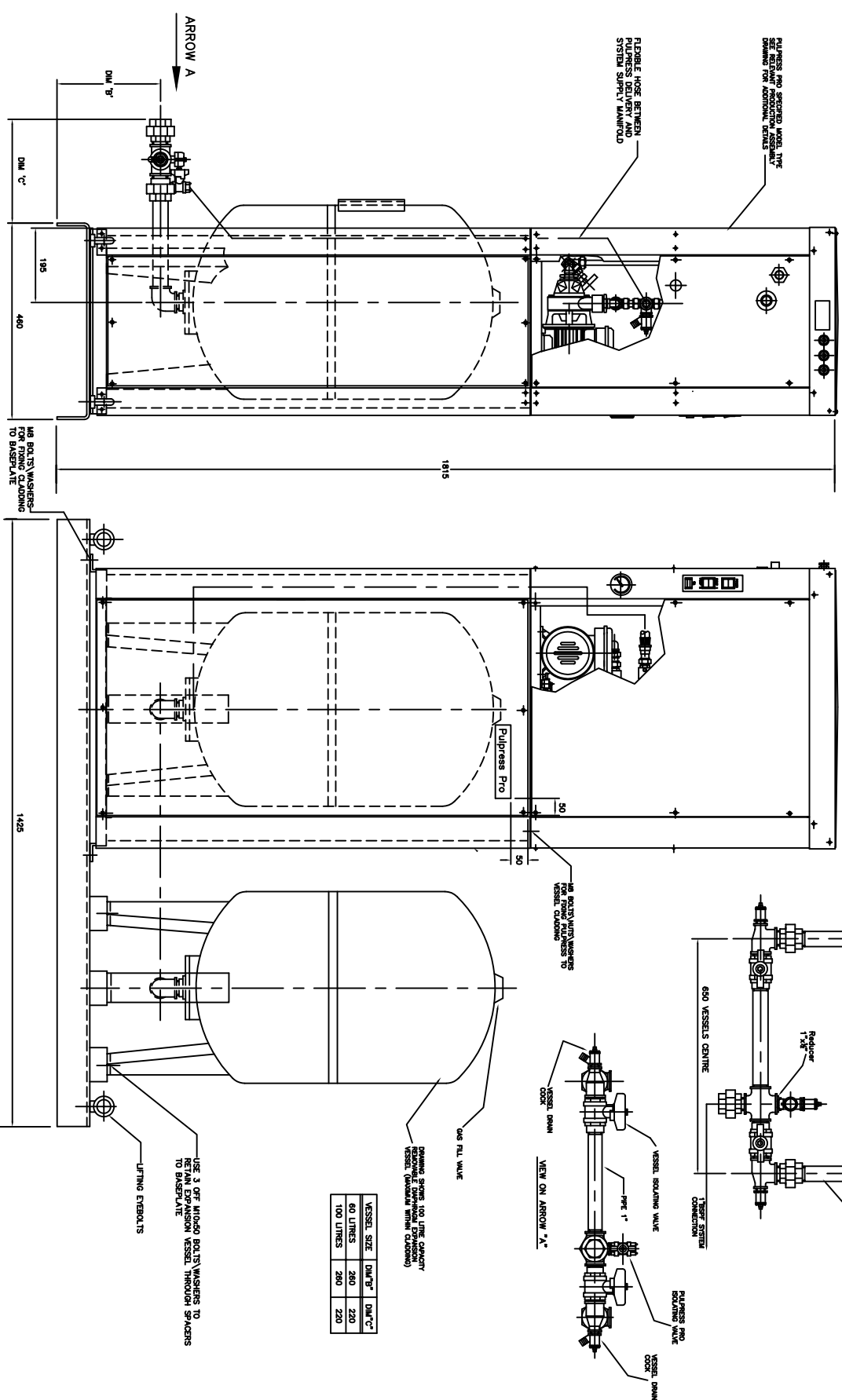


UNCONTROLLED



VESSEL SIZE	DM "B"	DM "C"
60 LITRES	260	220
100 LITRES	290	220

NOTES: DIMENSIONS IN MILLIMETRES UNLESS OTHERWISE STATED
 1. COMPLETED SYSTEM TO BE PRESSURE TESTED TO 140 PSIG.
 2. PREPWORK TO BE ASSEMBLED USING PTFE TAPE AND PERMANENT.

LAST MODIFICATION DETAILS		JOB No.		PART No.		WEIGHT KG		FILE NAME		TITLE	
DRAWING BORDER CHANGED		-		-		-		13465A		GENERAL ARRANGEMENT PULPESSES PRO UNIT PACKAGED IN CLADDING WITH 2 x 60-100 LITRE REMOVABLE DIAPHRAGM VESSELS BEDPLATE MOUNTED	
ISSUE DATE 15/02/2008 DRN PUB		-		-		-		-		DRG No. 13465A	
CHK PUB		APP PUB		-		-		-		DATE 11/11/1997 DRN PDC	
-		-		-		-		-		CHK DUA	
-		-		-		-		-		APP EGU	
-		-		-		-		-		SCALE NTS	
-		-		-		-		-		SHEET 1 OF 1	
<p>ARMSTRONG HOLDEN BROOKE PULLEN</p> <p>WENLOCK WAY, MANCHESTER, M12 5JL TEL: +44 (0) 161 223 2223</p>											