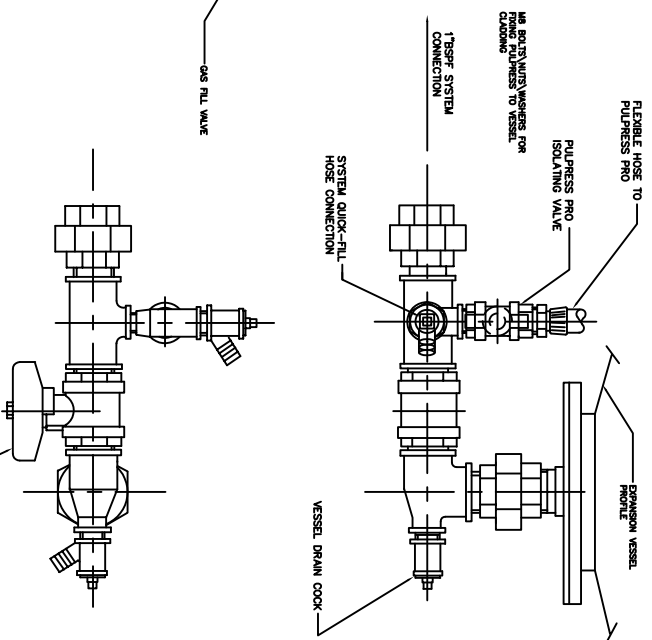


VESSEL SIZE	DM B	DM C
60 LITRES	100	110
100 LITRES	100	110

SCRAP VIEW ON ARROW "A"



UNCONTROLLED

NOTES: DIMENSIONS IN MILLIMETRES UNLESS OTHERWISE STATED
 1. COMPLETED SYSTEM TO BE PRESSURE TESTED TO 140 PSIG.
 2. PIPENWORK TO BE ASSEMBLED USING PTFE TAPE AND PERMANBOND.

LAST MODIFICATION DETAILS	JOB No.	PART No.	WEIGHT KG	FILE NAME
DRAWING BORDER CHANGED	-	-	-	13085A
ISSUE DATES/02/2006/DRN PJB	DESIGN No.	PATTERN No.	MATERIAL	MAT'L SPEC.
CHK PJB	-	-	-	-
APP PJB	THIS DRAWING IS THE PRIVATE AND CONFIDENTIAL PROPERTY OF ARMSTRONG HOLDEN BROOKE PULLEN LTD. ALL COPYRIGHT, MANUFACTURING AND SALES RIGHTS RESERVED.			

ALL DIMENSIONS IN mm DRAWN TO BS308 WELDING SYMBOLS TO BS499 SURFACE FINISH SHOWN IN MICROMETERS MACHINE WHERE SHOWN ✓ TO TOLERANCE ± 0.3MM UNLESS OTHERWISE STATED	TITLE
	GENERAL ARRANGEMENT PULPRESS PRO UNIT PACKAGED IN CLADDING WITH 60-100 LITRE REMOVABLE DIAPHRAGM VESSEL

DRG No.	13085A
DATE 10/10/1997	DRN PDC
CHK DUA	APP EGU
SCALE NTS	SHEET 1 OF 1

ARMSTRONG HOLDEN BROOKE PULLEN

WENLOCK WAY, MANCHESTER, M12 5UL
 TEL: +44 (0) 161 223 2223