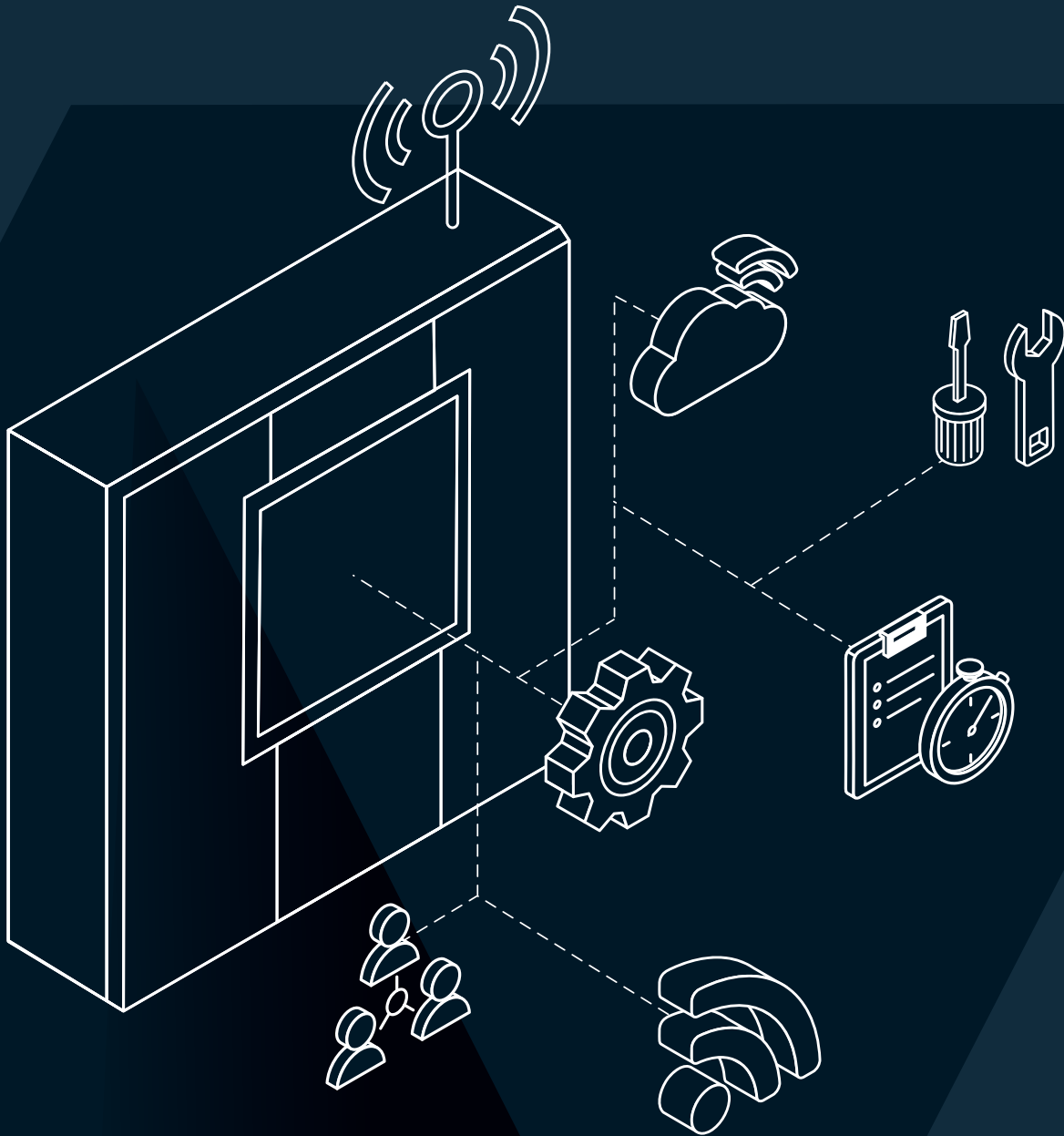


Meet the ultimate
pump control multi-tasker.

Systems Envelope | SE-F



SE-F

Flow optimization

The world's most adaptable pump control module

Systems Envelope SE-F can instantly unify and optimize any heating or cooling system.



Controls multiple system types

- Variable primary only
- Variable secondary pumping systems
- Steam/ water systems

Multi-Pump Control

Lower energy costs.

8

Control and optimize up to 8 pumps



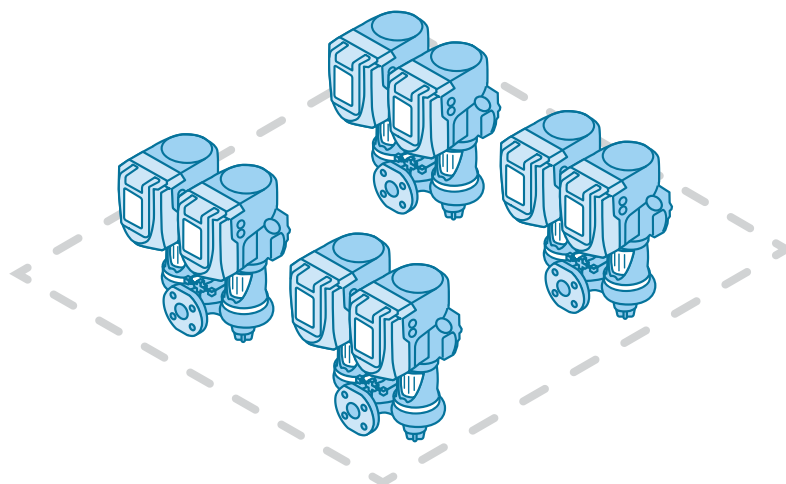
Demand-based control and best-efficiency staging



Patented technology modulates flow and pressure



Instantly increase pumping efficiency by up to 30%



Multi-Zone Operation

More comfort and control.



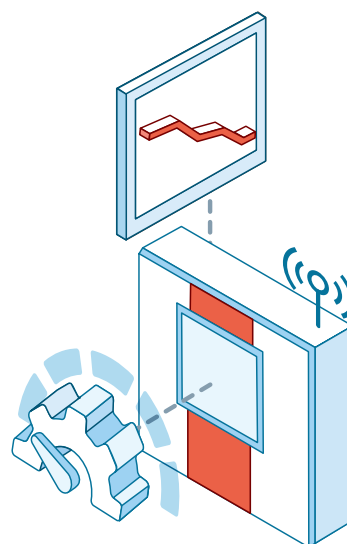
Precise pressure and flow levels to serve up to 16 zones



Maintain the perfect temperatures for your people, inventory and equipment



No more energy wasted delivering flow where it isn't needed



Multi-Talented

Connects and controls all your pumps and valves.

Systems Envelope SE-F can optimize any pump system. Any mix of components. Any mix of manufacturers. No custom coding required. It's the easiest, fastest way to improve overall performance.



BAS systems



Controls and drives



Steam valves and by-pass valves



Any and all pumps

Multi-function control

Water and steam valve control of multiple systems.



Minimum flow bypass valve control in variable primary systems.



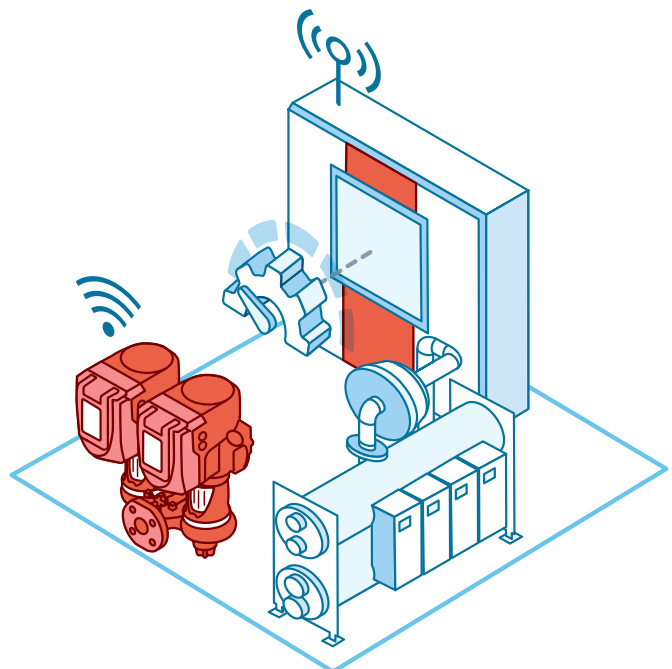
Modulates 1/2 and 3/4 steam valves to deliver water temperature set-point



Manages hydronic two-port valve on primary side of heat exchanger

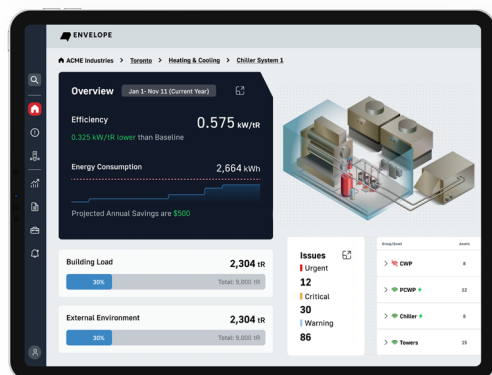


Directs hydronic three-port mixing valve for precise temperature blending



Multi-Screen

Access your building performance. Anywhere. Anytime.



Cloud analytics service stays in constant contact with your system and sends you the most important insights.



Constantly compares performance against efficiency targets



Issues are detected before they become performance-stealing problems



Clean, intuitive user interface



Performance data and trends are reviewed by Armstrong experts, quarterly

Multi-Mapping

Intelligent controller delivers industry-leading efficiency.

System Envelope automatically uses the performance maps of intelligent pumps to save energy and reduce strain on system components. It's a win-win.



Harnesses the full value of duty rotation



Minimize maintenance and repair costs



Auto-flow dynamically adjusts the scheduled operating head to match actual system head



Automatically syncs primary flow to secondary demand in variable systems

Multi-Operational

Any building. Any requirement.

Fastest and easiest way to boost your HVAC efficiency in all these applications.



Minimizes energy and water use



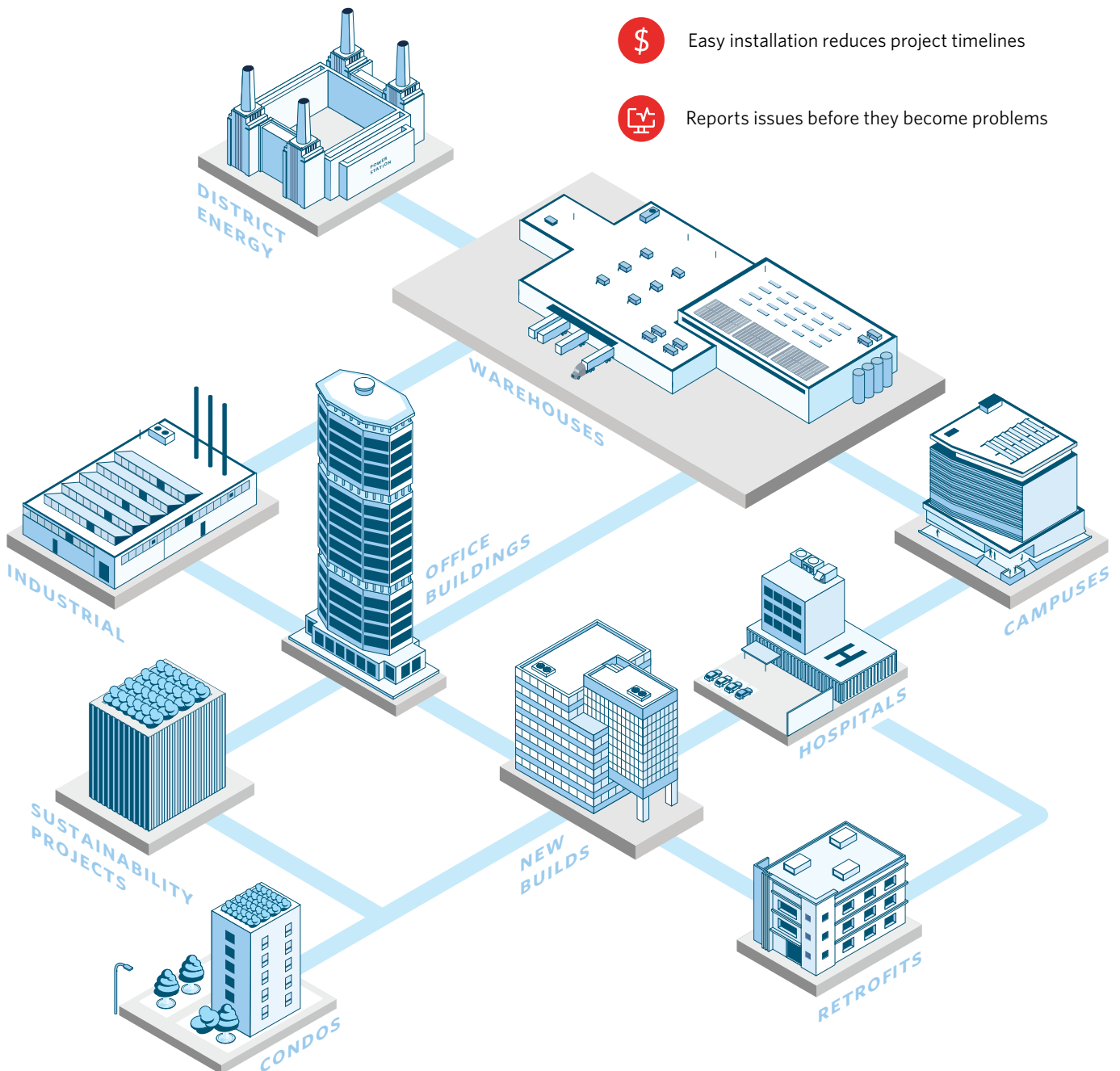
Zero downtime



Easy installation reduces project timelines



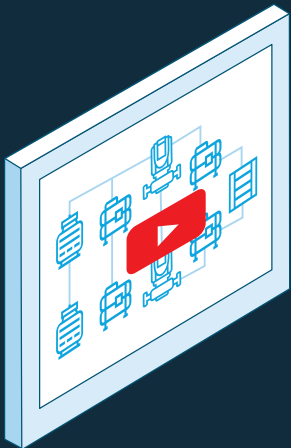
Reports issues before they become problems



Systems Envelope

SE-F10 & SE-F20

Product Type	System Envelope SE-F10 & SE-F20			
BACNET CONFORMANCE	Conforms to the BACnet Building Controller (B-BC) Standard Device profile, as defined in BACnet 135-2012 Annex J, Protocol Revision 14			
BACNET OBJECTS	Maximum number of BACnet objects: 7168			
3RD PARTY INTEGRATION	Supports up to 7168 total BACnet and/or 65535 Modbus integration points			
POWER	24 Vac (+10/-15)%, 50-60 hZ, 45 VA 28 to 36 Vdc (-20/+10%), 30W			
COMMUNICATION				
SERIAL PORT 1	For communication with the following: HMI, Modbus RTU, 19200 bps			
SERIAL PORT 2	For communication with the following: BACnet/MSTP serial network at 9,600 to 115.200 bps Modbus RTU serial network at 9,600 to 115.200 bps			
SERIAL PORT 3	For communication with the following: Pumps VFD: Armstrong DEPC, Danfoss FC-101/102. ABB ACH550/580 using Modbus RTU Protocol			
SERIAL PORT 4	For communication with Envelope: Armstrong Cloud			
USB PORT	USB type A connector (Troubleshooting and software download)			
HMI	Carel PGDX (4.3", 7", or 10") widescreen resistive Touch Panel with LCD TFT display. Software: Carel			
PLC	Carel c.pCO, microprocessor-based, programmable electronic controller, featuring a multitasking operating system, compatible with the Carel c.pCO Sistema family of devices, which includes programmable controllers, user terminals, gateways, communication devices and remote management devices. Five serial communication ports, two ethernet ports, and two USB ports			
MICROPROCESSOR	32 bit, 100MHz			
MEMORY	Non-volatile memory (Flash) 128 Mbyte of which 90Mbyte available as File storage Data memory (RAM) 16 Mbytes Retain memory 31744 bytes			
REAL TIME CLOCK	Yes with battery			
ENVIRONMENTAL RANGE	(-20 to 60°C (-4 to 140°F))			
PHYSICAL	SE-F10-1 & SE-F20-1:	NEMA: 20" × 20" × 8"	IEC: 600 × 500 × 200	UK: 600 × 400 × 300
	SE-F10-2 & SE-F20-2:	NEMA: 24" × 24" × 8"	IEC: 600 × 600 × 200	UK: 500 × 600 × 300
	SE-F20-3:	NEMA: 24" × 30" × 8"	IEC: 600 × 750 × 200	UK: 600 × 600 × 300
	SE-F20-4:	NEMA: 24" × 30" × 8"	IEC: 650 × 800 × 200	UK: 800 × 600 × 300
PROTECTION	Category of immunity to voltage surges (EN 61000-4-5): Category III			
COMPLIANCE	UL 916 CE EN 61326-1 FCC Part 15 Subpart B, Class B FCC Part 15 Subpart C C-UL listed to Canadian Standards Association (CSA) C22.2 No. 205-M1983 "Signal Equipment" 1999/5/EC R&TTE Directive CCC SRRC RSS ROHS			
ENVIRONMENTAL SPECIFICATIONS				
ENCLOSURE	IP54 / NEMA 4 panel rating			
PLASTIC RATING	Fire retardant plastic ABS UL94-5VA			
MOUNTING	Base: Plastic, DIN rail or screw mount options. Cover: Plastic			



watch
the
video

FILE NO: 91.40
DATE: DECEMBER 2025

SUPERCEDES: NEW
DATE: NEW

For more information, contact your
Armstrong representative or visit us at:
ArmstrongFluidTechnology.com/ContactUs

ARMSTRONG FLUID TECHNOLOGY®
ESTABLISHED 1934