



An active performance
management solution.

PUMP MANAGER





Pump Manager is a cloud-based service that connects operators to Design Envelope pumps, providing real-time insights based on operating data.

KEY FEATURES

REAL-TIME INSIGHTS AND ALERTS

AVAILABLE NOW:

Excessive vibration

Broken coupling

Pump in hand

Dead head

COMING SOON:

Bearing Failure

Impeller imbalance

Shaft Misalignment

Mechanical Seal Failure

Cavitation

PERFORMANCE REPORTS

Know of problems before they occur. Pump Manager will alert you when something is wrong.

The average flow profile over time

The average energy consumption profile

Current operation conditions relative to design conditions

Flow and head relationships

3 dimensional pump vibration

Carbon footprint report

KEY BENEFITS

REDUCE OPERATING COSTS

Continuous optimization for maximum energy efficiency

Lower maintenance costs

INCREASE AVAILABILITY AND RELIABILITY

Reduce unexpected failures

Early problem detection

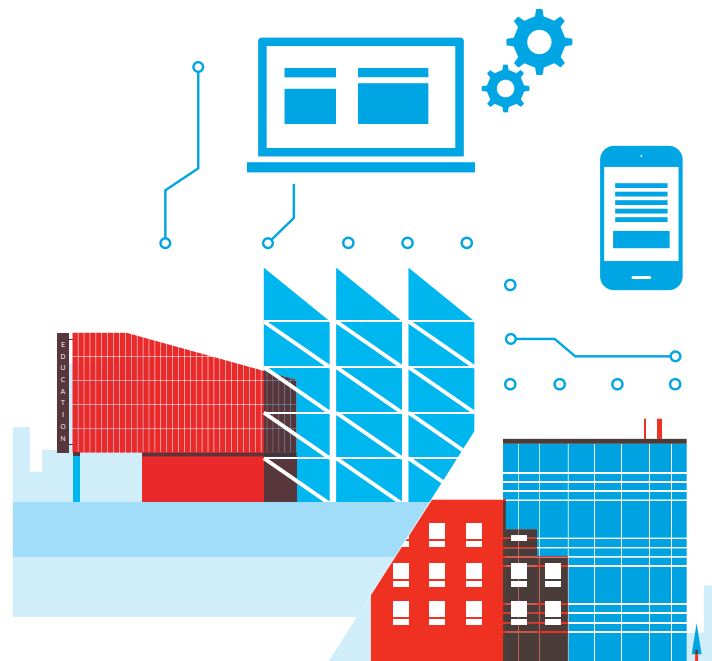
Faster return to service

IMPROVE TENANT COMFORT AND PRODUCTIVITY

Keep flows in the desired range, reducing temperature swings

IMPROVE BUILDING RESILIENCE

Make informed capital investment decisions



PLANS

	ESSENTIALS	PROFESSIONAL	ENTERPRISE
PERFORMANCE REPORTS	✓	✓	✓
REAL-TIME INSIGHTS AND ALERTS		✓	✓
PREDICTIVE MAINTENANCE Know when to service the pump with the right parts		✓	✓
INTEGRATION WITH BUILDING SYSTEMS Building Automation Systems (BAS) Energy Management Systems (EMS) Computerized Maintenance Management Systems (CMMS)			✓
EDUCATION Learn from the experts about fluid flow fundamentals, pump operating and efficiency tips	✓	✓	✓
SUPPORT We are here for you 24x7 with customer service and technical support		✓	✓
ACCOUNT REVIEW WITH PUMP ENGINEER		Annual	Semi-Annual

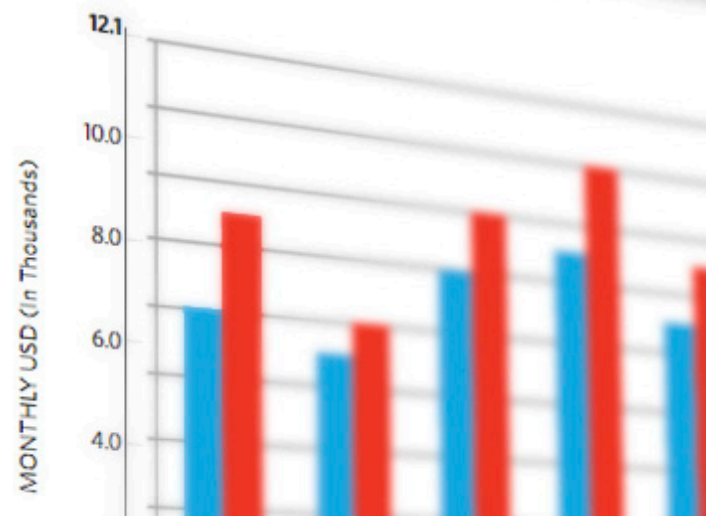


Trend

Search Performance Map Real Time

	Location	Company	Users
A	Birmingham		
B		04714B6000FE	
C		Heywood Wharf	
D		4372	
E			
F		04714B6000F3	
G		Heywood Wharf	
H		4372	
I			
J	Toronto		
K		001ab602f911	
L		23 Bertrand Avenue	
M		4372	
N			
O			

Energy Savings



TORONTO

23 BERTRAND AVENUE,
TORONTO, ONTARIO,
CANADA, M1L 2P3
+1 416 755 2291

BUFFALO

93 EAST AVENUE, NORTH
TONAWANDA, NEW YORK,
USA, 14120-6594
+1 716 693 8813

DROITWICH SPA

POINTON WAY, STONEBRIDGE CROSS
BUSINESS PARK, DROITWICH SPA,
WORCESTERSHIRE,
UNITED KINGDOM, WR9 0LW
+44 8444 145 145

MANCHESTER

WOLVERTON STREET, MANCHESTER
UNITED KINGDOM, M11 2ET
+44 8444 145 145

BANGALORE

#18, LEWIS WORKSPACE, 3RD FLOOR,
OFF MILLERS - NANDIDURGA ROAD,
JAYAMAHAL CBD, BENSON TOWN,
BANGALORE, INDIA 560 046
+91 80 6510 3555

SHANGHAI

UNIT 903, 888 NORTH SICHUAN RD.
HONGKOU DISTRICT, SHANGHAI
CHINA, 200085
+86 21 5237 0909

BEIJING

ROOM 1612, NANYIN BUILDING NO.2
NORTH EAST THRID RING ROAD
CHAOYANG DISTRICT, BEIJING,
CHINA 100027
+86 21 5237 0909

SÃO PAULO

RUA JOSÉ SEMIÃO RODRIGUES
AGOSTINHO, 1370 GALPÃO 6 EMBU
DAS ARTES, SAO PAULO, BRAZIL
+55 11 4785 1330

LYON

93 RUE DE LA VILLETTE
LYON, 69003 FRANCE
+33 4 20 10 26 21

DUBAI

JAFZA VIEW 19, OFFICE 402
P.O. BOX 18226 JAFZA,
DUBAI - UNITED ARAB EMIRATES
+971 4 887 6775

JIMBOLIA

STR CALEA MOTILOR NR. 2C
JIMBOLIA 305400, JUD.TIMIS
ROMANIA
+40 256 360 030

FRANKFURT

WESTERBACHSTRASSE 32,
D-61476 KRONBERG IM TAUNUS
GERMANY
+49 6173 999 77 55

DO I QUALIFY?

You qualify if you have an
Armstrong Design Envelope
pump with built-in display
that looks like this.

ARMSTRONG	
Flow	67.8 GPM
Head	66.55 FT
Speed	2880 RPM
Power	2.54 kW
Voltage	333.6 V
Current	5.16 A
Auto	
Pump Tag: CHW P12	



pumpmanager.io/login

OR CONTACT US:

info@armstrongfluidtechnology.com

For more information
contact your local Armstrong
representative or visit our
website at:
ArmstrongFluidTechnology.com

ARMSTRONG FLUID TECHNOLOGY®
ESTABLISHED 1934

ARMSTRONGFLUIDTECHNOLOGY.COM